

TIOGA



TIOGA
BICYCLE COMPONENTS CATALOG



Maintaining an Edge

Throughout its history, Tioga's aim has been to improve the quality of the cycling experience -- this quest often leads to innovations. Through its consistent role as a successful innovator, Tioga and its cyclists have remained at the top of the field for several decades. Tioga's trailblazing efforts have benefited the industry as a whole and set new standards in bike and component manufacturing.

Creating new standards is never the mission at Tioga; it is simply the means to reach the goal of improving the riding experience. In embracing this philosophy, Tioga has often dismissed convention to stay true to its belief. For example, at the outset of the mountain biking trend, Tioga forecasted the need for a sturdier front end on the mountain bike, where the main steering components are located, and one that could withstand the added stress that downhill and rough terrain riding placed on the bike. Making this change was substantial as it required Tioga to reengineer the entire front end of the bike from the fork steer tube, to the head set (bearings within the head tube of the frame to allow steering), up to the stem. The company dismissed a standard that had been used for decades to recreate a larger diameter front end that strikes a perfect balance of added strength with minimal weight penalty. Tioga figured that the new sizing is absolutely required for the safety of all cyclists as well as for the advancement of mountain bike technologies that it rallied the industry's top manufacturers around the change. In creating the new standard, Tioga completely changed the way bicycles are designed and allowed designers to create stronger, faster bikes. The significance of this change is tantamount to widening of the rail road tracks for better stability, thus requiring all train manufacturers to redesign their trains to be compatible with the wider tracks. For a number of years, the reengineered size was fondly referred to as "Tioga size." To this day, the 1-1/8" "Tioga size" steer tube remains the industry standard.

Another example of how Tioga's passion for improving the quality of the ride created another innovation that advanced the cycling world was the company's development and promotion of a true BMX tire -- the Competition III. Prior to the Comp-III, BMX tires were all essentially scaled-down versions of motorcycle motocross tires, as BMX was a derivative motocross. However, Tioga's engineers realized that BMX required specialized treads that would harness the much smaller amount of power coming from the rear wheel (compared to motocross) and take full advantage of the maneuverability of BMX bikes. The result was a unique tread pattern invented for the Comp III Tire that maximized traction as well as allowed better acceleration. Within two years of its introduction, the Comp-III became the most widely used BMX tire on the market, and is today, more than 30 years since its introduction, still one of the most recognizable tread patterns around.

Tioga's commitment to enhancing the riding experience also is evident in the development of another industry changing Tioga DH saddle, an extended saddle (3" longer than the prevailing model) with thicker padding that allowed riders to better maneuver descents. Spurred on by the downhill biking trend in the late 1990's, this improvement challenged the conventional uses of the saddle and gave it a purpose beyond merely a sitting device. Understanding that experienced cyclists navigating more technical terrains often grip the saddle with his or her thighs to better control the bike's movement, especially on high-speed descents, the elongated model provided more surface area for the rider's thighs to grip, translating into better control during out-of-saddle maneuvering. The Tioga Downhill saddle defined the Downhill saddle segment and created numerous imitators.

Tioga's unconventional approach to addressing cyclists' needs continued with the advent of the Tioga Spyder saddle in 2006 - a first-of-its kind lightweight racing saddle offering unmatched shock absorption and comfort without the need for padding. Tioga's engineers observed that the thin padding typically found on enthusiasts' level racing saddles serves the purpose of conforming to the sit-bone for initial comfort, but does little for actual shock absorption. So instead of relying on padding to absorb shock, Tioga decided to eliminate the pad altogether, and instead, develop a flexible shell that supports the rider's weight evenly while providing more shock-absorbing flex than conventional padding. The result is a super-lightweight racing saddle with unmatched levels of shock absorption and comfort in a stunning appearance that was a winner of the 2009 Red Dot Design Award.

In keeping with this tradition and successful formula, Tioga debuts several new products this season that are poised to become instant classics.

The Psycho Genius and Psycho Genius Venture MTB tires -- the first mountain bike tire with a tread designed to actively adapt to rider input and the changing terrain environment. The new tires incorporate Tioga's Dynamic Knob Technology which utilizes unique knob architecture matched with specially formulated rubber compounds enabling individual knobs to actually change and alter its shape, enhancing tread surface contact, increasing traction as needed.

ZEROaxle pedal systems -- revolutionary platform pedal system with a true breakthrough pedal body form factor that's 100% compatible with existing crank standards. ZEROaxle pedals utilizes oversize bearing redirected inboard, which eliminates the traditional pedal spindle, permitting advantageous pedal body designs not possible with conventional construction. The first pedal available with the ZEROaxle system is the MT-ZERO mountain bike pedal -- with a body profile measuring a mere 7mm (and 4.5mm at the thinnest), it's the thinnest dual-concave pedal in the world. More stunningly unique ZEROaxle pedals will be available in the next few months to further establish Tioga as a true innovator of cycling components.



ZEROaxle MT-ZERO-SFpro

- Investment cast 1-piece Chromoly body
- ZEROaxle over-size bearing system
- with 32 replaceable pins
- 623g

| CODE | COLOR |
|----------|--------------------|
| R9HT0417 | Black |
| R9HT0418 | White |
| R9HT0419 | Hard Chrome Coated |



ZEROaxle SS-ZERO-01

- Chromoly body / Aluminum Cage
- ZEROaxle over-size bearing system
- 356g

| CODE | COLOR |
|----------|--------|
| R9HT0387 | Black |
| R9HT0386 | Gold |
| R9HT0388 | Silver |



ZEROaxle MT-ZERO-01

- Investment cast 1-piece Chromoly body
- ZEROaxle over-size bearing system
- Dual-concave platform with 10 replaceable pins
- 530g / pair

| CODE | COLOR |
|----------|--------|
| R9HT0384 | Black |
| R9HT0383 | White |
| R9HT0385 | Silver |



ZEROaxle CT-ZERO-01

- Chromoly body / Aluminum Cage
- ZEROaxle over-size bearing system
- 388g

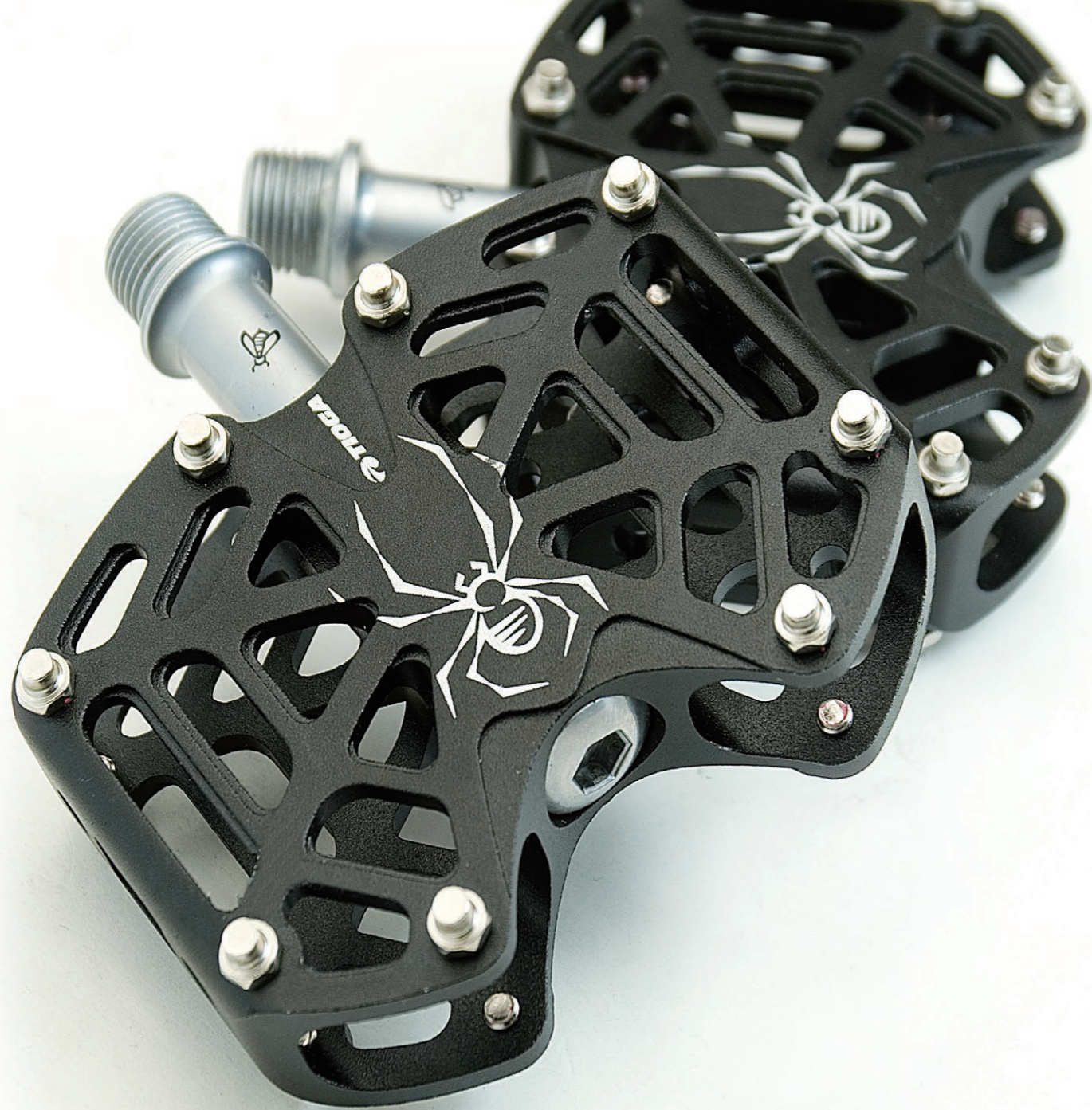
| CODE | COLOR |
|----------|--------|
| R9HT0390 | Black |
| R9HT0389 | Gold |
| R9HT0391 | Silver |



The ZEROaxle pedal system is modular and designed to be virtually maintenance free.



Should the bearing wear down, simply replace the ZEROaxle bolt. The same applies to the body. Replacement ZEROaxle bolt and MT-ZERO body are available individually, in left or right configurations. Its modular design will also allow users to easily switch different body designs from any current and future ZEROaxle pedals.



SPYDER PEDAL

| CODE | COLOR |
|----------|-------|
| R9HT0336 | Black |
| R9HT0342 | White |

- 6061-T6 Alloy CNC
- Sealed Bearings
- Chromoly 9/16" Axle
- With 32 Flat Grip-pins
- L90 x W58 x H19mm
- 260g (without pins)

SUREFOOT 9

| CODE | COLOR |
|----------|-------|
| PDL11100 | Black |
| PDL11101 | C.P. |

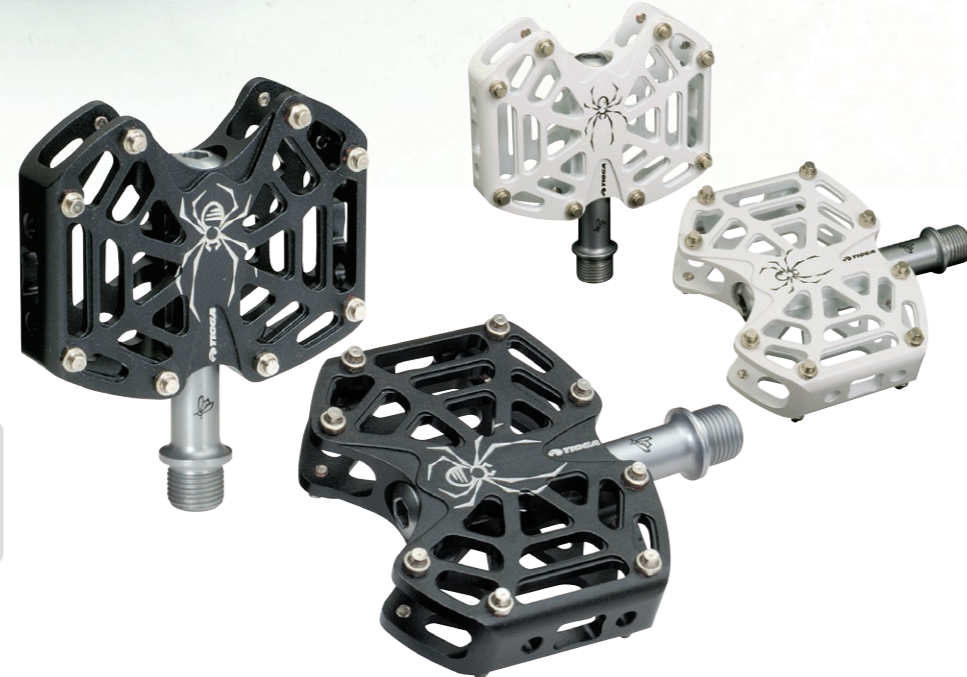
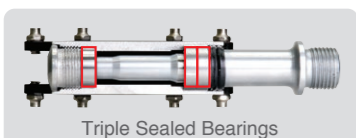
- 6061-T6 Alloy CNC
- Sealed Bearings
- Chromoly 9/16" Axle
- With 32 Flat Grip-pins
- L100 x W57 x H18mm
- 248g (without pins)



D-SPYDER PEDAL

- 6061-T6 Alloy CNC
- Triple Sealed Bearings
- Chromoly 9/16" Axle
- With 32 Flat Grip-pins
- L90 x W72 x H20mm
- 315g (without pins)

| CODE | COLOR |
|----------|-------|
| R9HT0352 | Black |
| R9HT0353 | White |



SUREFOOT 8

| CODE | COLOR |
|----------|--------|
| R9HT0344 | Black |
| R9HT0351 | Silver |

- 6061-T6 Alloy CNC
- Sealed Bearings
- Chromoly 9/16" Axle
- With 32 Flat Grip-pins
- L90 x W58 x H19mm
- 255g (without pins)



SUREFOOT SLIM

- Engineering Plastic Body
- Ball Bearings
- Chromoly 9/16" Axle
- Dual concave platform
- 36 Mold pins
- L110 x W100 x H27mm
- (Thinnest Part : 10mm)
- 300g

| CODE | COLOR |
|------------|-------|
| R9HT0405 | Black |
| R9HT0406 | White |
| * R9HT0420 | Blue |
| * R9HT0421 | Red |
| * R9HT0422 | Green |
| * R9HT0423 | Clear |

* Newly Added



SUREFOOT MX PRO

- 6061-T6 Alloy CNC
- Sealed Bearings
- Chromoly 9/16" Axle
- With 40 Grip-pins
- L100 x W106 x H24mm
- 450g (without pins)

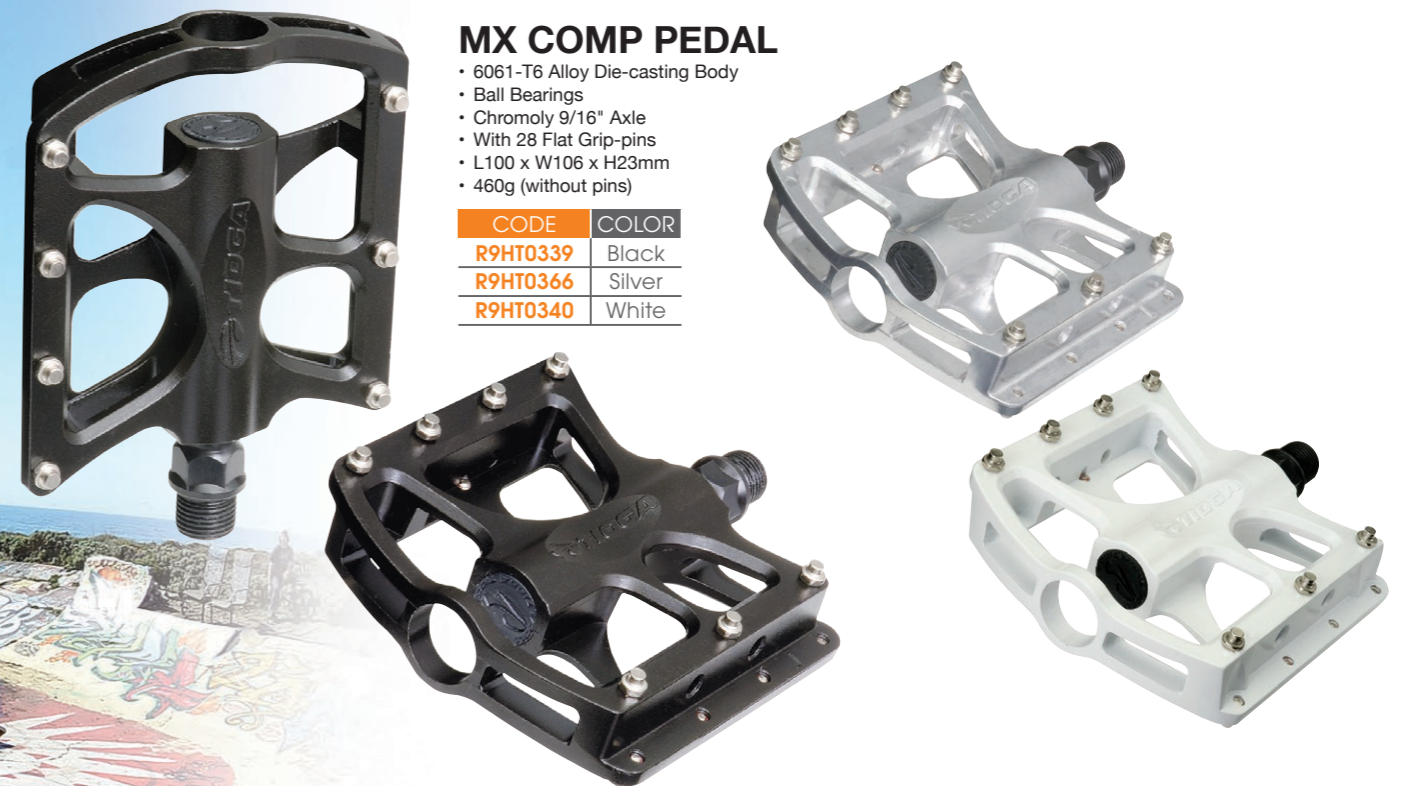
| CODE | COLOR |
|----------|--------|
| R9HT0273 | Black |
| R9HT0334 | Silver |
| R9HT0335 | White |



MX COMP PEDAL

- 6061-T6 Alloy Die-casting Body
- Ball Bearings
- Chromoly 9/16" Axle
- With 28 Flat Grip-pins
- L100 x W106 x H23mm
- 460g (without pins)

| CODE | COLOR |
|----------|--------|
| R9HT0339 | Black |
| R9HT0366 | Silver |
| R9HT0340 | White |





SUREFOOT MINI

- 6061-T6 Alloy CNC
- Sealed Bearings
- Chromoly 9/16" Axle
- L70 x W62 x H20mm
- 208g

| CODE | COLOR |
|----------|-------|
| R9HT0407 | Black |
| R9HT0410 | White |
| R9HT0408 | Gold |

SUREFOOT 6

- 6061-T6 Alloy Die-casting Body & Alloy Cage
- Ball Bearings
- With Double-flip
- With Grease Port
- Chromoly 9/16" Axle
- L90 x W74 x H32mm
- 322g

| CODE | COLOR |
|----------|------------------------|
| R9HT0411 | Black (Black Body) |
| R9HT0412 | Gold (Black Body) |
| R9HT0413 | Gunmetal (Silver Body) |



SUREFOOT 7

- 6061-T6 Alloy Die-casting Body & Alloy Cage
- Sealed Bearings
- Chromoly 9/16" Axle
- L95 x W64 x H22mm
- 267g

| CODE | COLOR |
|----------|---------------------|
| R9HT0404 | Black (Silver Body) |



SUREFOOT COMPACT Ti AXLE

- 6061-T6 Alloy CNC
- Sealed Bearings
- Titanium 9/16" Axle
- L70 x W62 x H20mm
- 164g

| CODE | COLOR |
|----------|--------------|
| R9HT0376 | Black |
| R9HT0377 | Titan-Silver |

SUREFOOT COMPACT CrMo AXLE

- 6061-T6 Alloy CNC
- Sealed Bearings
- Chromoly 9/16" Axle
- L70 x W62 x H20mm
- 204g

| CODE | COLOR |
|----------|--------------|
| R9HT0324 | Black |
| R9HT0323 | Titan-Silver |

EASY FOOT TIOGA Acentia

- 6061-T6 Alloy Die-casting Body & Kraton Rubber Top
- Dual Concave Shape
- Ball Bearings
- Chromoly 9/16" Axle
- L90 x W93 x H25mm
- 480g

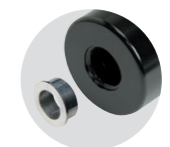
| CODE | COLOR |
|----------|--------|
| PDL08900 | Silver |



MX COMP FOOT PEG

- Steel
- Ø38 x 110mm
- 552g

| CODE | COLOR |
|----------|-------|
| R9ZA0561 | Black |
| FPG02101 | C.P. |



Fits 14mm axle, or 10mm axle with bushing



PSYCHO GENIUS FAST 13

- Synergy Dual Compound
- Mag60 Casing + Tubeless Ready
- Kevlar Bead

| CODE | SIZE | WEIGHT |
|----------|-------------|--------|
| BCIR0984 | 27.5 x 2.25 | 687g |
| BCIR0982 | 29 x 2.10 | 697g |



PSYCHO GENIUS VENTURE

- Synergy Dual Compound or Trident 3-layer Rubber Compound(BCIR0939 Only)
- Mag60 Casing or Mag60+ Reinforced Casing(BCIR0939 Only)
- Steel Bead or Kevlar Bead

| CODE | SIZE | WEIGHT |
|------------|---|--------|
| BCIR0935 | 26 x 2.35 (Synergy Dual Compound / Mag 60 Casing / Kevlar Bead) | 727g |
| BCIR0936 | 26 x 2.35 (Synergy Dual Compound / Mag 60 Casing / Steel Bead) | 797g |
| BCIR0937 | 26 x 2.50 (Synergy Dual Compound / Mag 60 Casing / Kevlar Bead) | 863g |
| BCIR0938 | 26 x 2.50 (Synergy Dual Compound / Mag 60 Casing / Steel Bead) | 933g |
| BCIR0939 | 26 x 2.50 (Trident 3-layer Rubber Compound / Mag 60+ Reinforced Casing / Steel Bead) | 1,240g |
| * BCIR0988 | 27.5 x 2.35 (Synergy Dual Compound / Mag 60 Casing / Tubeless Ready / Kevlar Bead) | 705g |
| * TIR23200 | 29 x 2.40 (Synergy Dual Compound / Mag 60 Casing / Kevlar Bead) | N.A. |
| * BCIR0985 | 29 x 2.40 (Synergy Dual Compound / Mag 60 Casing / Steel Bead) | 895g |

* Newly Added



PSYCHO GENIUS



PSYCHO GENIUS 29

- Synergy Dual Compound(Center : Motion360 / Side : High Energy)
- Mag60 Casing
- Steel Bead or Kevlar Bead

| CODE | SIZE | WEIGHT |
|----------|-------------------------|--------|
| BCIR0929 | 29 x 2.25 (Kevlar Bead) | 815g |
| BCIR0930 | 29 x 2.25 (Steel Bead) | 890g |

PSYCHO GENIUS

- Synergy Dual Compound(Center : Motion360 / Side : High Energy)
- Mag60 Casing
- Steel Bead or Kevlar Bead

| CODE | SIZE | WEIGHT |
|----------|-------------------------|--------|
| BCIR0921 | 26 x 1.95 (Kevlar Bead) | 640g |
| BCIR0922 | 26 x 1.95 (Steel Bead) | 710g |
| BCIR0904 | 26 x 2.10 (Kevlar Bead) | 690g |
| BCIR0903 | 26 x 2.10 (Steel Bead) | 760g |
| BCIR0901 | 26 x 2.30 (Kevlar Bead) | 790g |
| BCIR0900 | 26 x 2.30 (Steel Bead) | 860g |

PSYCHO GENIUS TUBELESS

- Synergy Dual Compound(Center : Motion360 / Side : High Energy)
- Mag60 Casing
- UST Tubeless
- Kevlar Bead

| CODE | SIZE | WEIGHT |
|----------|-----------|--------|
| BCIR0920 | 26 x 1.95 | 805g |
| BCIR0928 | 26 x 2.20 | 880g |



futuristic classic

FACTORY DH

- AP Rubber
- 60TPI Casing
- Steel Bead

FRONT

| CODE | SIZE | WEIGHT |
|----------|-----------|--------|
| BCIR0592 | 26 x 2.10 | 980g |
| BCIR0593 | 26 x 2.30 | 1,080g |

REAR

| CODE | SIZE | WEIGHT |
|----------|-----------|--------|
| BCIR0604 | 26 x 2.10 | 980g |
| BCIR0605 | 26 x 2.30 | 1,080g |



PSYCHO II

- AP Rubber
- 60TPI Casing
- Steel Bead

| CODE | SIZE | WEIGHT |
|----------|-----------|--------|
| BCIR0362 | 26 x 1.95 | 710g |



FACTORY XC

- AP Rubber
- 60TPI Casing
- Steel Bead or Kevlar Bead

FRONT

| CODE | SIZE |
|----------|-------------------------|
| BCIR0549 | 26 x 1.95 (Steel Bead) |
| BCIR0547 | 26 x 1.95 (Kevlar Bead) |

REAR

| CODE | SIZE |
|----------|-------------------------|
| BCIR0553 | 26 x 1.95 (Steel Bead) |
| BCIR0551 | 26 x 1.95 (Kevlar Bead) |



FS100

- AP Rubber
- 60TPI Casing
- Steel Bead

| CODE | SIZE | WEIGHT |
|----------|-----------|--------|
| BCIR0773 | 24 x 2.10 | 700g |
| BCIR0771 | 26 x 2.10 | 760g |
| BCIR0772 | 26 x 2.30 | 810g |



REFLECTIVE CITY SLICKER

- High Energy Rubber
- 60TPI Casing
- Steel Bead
- Reflective Sidewall Stripe

| CODE | SIZE | WEIGHT |
|----------|-----------|--------|
| TIR22900 | 26 x 1.50 | 555g |
| TIR23000 | 700 x 32C | 460g |



COMODO

- High Energy Rubber
- 60TPI Casing
- Steel Bead

| CODE | SIZE | COLOR | WEIGHT |
|----------|-----------|-------|--------|
| TIR18900 | 26 x 1.25 | Black | 380g |
| TIR22400 | | White | |
| TIR18901 | 26 x 1.50 | Black | 510g |
| TIR22401 | | White | |
| TIR18902 | 26 x 1.75 | Black | 520g |
| TIR22402 | | White | |
| TIR19000 | 700 x 25C | Black | 360g |
| TIR22500 | | White | |
| TIR19001 | 700 x 30C | Black | 430g |
| TIR22501 | | White | |
| TIR19002 | 700 x 38C | Black | 475g |
| TIR22502 | | White | |

e-COMODO

- UTC Rubber
- 27TPI Casing
- Steel Bead

| CODE | SIZE | WEIGHT |
|----------|------------|--------|
| BCIR0942 | 26 x 1.3/8 | 565g |
| BCIR0887 | 700 x 42C | N.A. |



CITY SLICKER

- High Energy Rubber
- 60TPI Casing
- Steel Bead

| CODE | SIZE | WEIGHT |
|----------|-----------|--------|
| BCIR0624 | 26 x 1.00 | 250g |
| BCIR0626 | 26 x 1.25 | 390g |
| BCIR0628 | 26 x 1.50 | 500g |
| BCIR0630 | 26 x 1.95 | 750g |
| BCIR0675 | 700 x 32C | 360g |
| BCIR0677 | 700 x 38C | 375g |



CITY SLICKER II

- AP Rubber
- 60TPI Casing
- Steel Bead

| CODE | SIZE | WEIGHT |
|----------|-----------|--------|
| BCIR0941 | 26 x 1.50 | 430g |
| BCIR0811 | 700 x 38C | 530g |



FACTORY TRIMLINE SF

- Dual Compound Rubber
- Cylex Casing
- Kevlar Bead

| CODE | SIZE | WEIGHT |
|----------|-----------|--------|
| BCIR0709 | 700 x 23C | 200g |

FACTORY TRIMLINE S

- Dual Compound Rubber
- Cylex Casing
- Kevlar Bead

| CODE | SIZE | WEIGHT |
|----------|-----------|--------|
| BCIR0707 | 700 x 23C | 200g |



TRIMLINE S

- Dual Compound Rubber
- 60TPI Casing
- Kevlar Bead

| CODE | SIZE | WEIGHT |
|----------|-----------|--------|
| BCIR0780 | 700 x 23C | 200g |

TRIMLINE F

- Dual Compound Rubber
- 60TPI Casing
- Kevlar Bead

| CODE | SIZE | WEIGHT |
|----------|-----------|--------|
| BCIR0737 | 700 x 23C | 220g |



POWER BAND S-SPEC

| | CODE | SIZE | WEIGHT |
|---|----------|-----------|--------|
| • UTC Rubber • Cylex Casing • Kevlar Bead | BCIR0908 | 20 x 1.85 | 295g |

POWER BAND

| | CODE | SIZE | WEIGHT |
|--|----------|-----------|--------|
| • UTC Rubber • 60TPI Casing • Steel Bead | BCIR0909 | 20 x 1.85 | 345g |



POWER BLOCK S-SPEC

| | CODE | SIZE | WEIGHT |
|---|----------|-----------|--------|
| • UTC Rubber • Cylex Casing • Kevlar Bead | BCIR0865 | 20 x 1.60 | 240g |
| | BCIR0866 | 20 x 1.75 | 310g |
| | BCIR0871 | 20 x 1.95 | 330g |

POWER BLOCK

| | CODE | SIZE | WEIGHT |
|--|----------|------------|--------|
| • UTC Rubber • 60TPI Casing • Steel Bead | BCIR0855 | 20 x 1.1/8 | 280g |
| | BCIR0854 | 20 x 1.3/8 | 355g |
| | BCIR0906 | 20 x 1.40 | 295g |
| | BCIR0851 | 20 x 1.60 | 305g |
| | BCIR0850 | 20 x 1.75 | 325g |
| | BCIR0873 | 20 x 1.95 | 380g |

POWER BLOCK 24

| | CODE | SIZE | WEIGHT |
|--|----------|-----------|--------|
| • UTC Rubber • 60TPI Casing • Steel Bead | BCIR0940 | 24 x 1.40 | 335g |
| | BCIR0933 | 24 x 1.60 | 395g |
| | BCIR0852 | 24 x 1.75 | 450g |
| | BCIR0853 | 24 x 2.10 | 510g |

POWER BLOCK 26

| | CODE | SIZE | WEIGHT |
|--|------------|-------------------------|--------|
| • UTC Rubber • 60TPI Casing • Steel Bead or • Kevlar Bead | BCIR0943 | 26 x 2.10 (Steel Bead) | 595g |
| | ※ BCIR0949 | 26 x 2.10 (Kevlar Bead) | 525g |

※ Newly Added



STREET BLOCK S-SPEC

- UTC Rubber
- 60TPI, 110PSI High Pressure Casing
- Kevlar Bead

| CODE | SIZE | WEIGHT |
|----------|-----------|--------|
| BCIR0914 | 20 x 1.95 | 465g |
| BCIR0912 | 20 x 2.15 | 545g |
| BCIR0910 | 20 x 2.25 | 575g |

STREET BLOCK

- UTC Rubber
- 60TPI, 110PSI High Pressure Casing
- Steel Bead

| CODE | SIZE | WEIGHT |
|----------|-----------|--------|
| BCIR0915 | 20 x 1.95 | 540g |
| BCIR0913 | 20 x 2.15 | 600g |
| BCIR0911 | 20 x 2.25 | 620g |

COMP III

- UTC Rubber
- 60TPI Casing
- Steel Bead

| CODE | SIZE | WEIGHT |
|----------|------------|--------|
| BCIR0647 | 20 x 1.1/8 | 260g |
| BCIR0651 | 20 x 1.3/8 | 300g |
| BCIR0655 | 20 x 1.50 | 340g |
| BCIR0659 | 20 x 1.75 | 380g |
| BCIR0663 | 20 x 2.125 | 460g |



FS100

- UTC Rubber
- 60TPI Casing
- Steel Bead

| CODE | SIZE | WEIGHT |
|----------|-----------|--------|
| BCIR0636 | 20 x 2.10 | 740g |



AMERICAN VALVE

| CODE | SIZE | ETRTO | VALVE |
|----------|--------------------|-----------|-------|
| BCIS0216 | 12.1/2 x 2.1/4 | 57-203 | 36mm |
| TIT06800 | 14 x 1.75 ~ 2.125 | 47/57-254 | |
| BCIS0531 | 16 x 1.75 ~ 2.125 | 47/57-305 | |
| BCIS0545 | 18 x 1.75 ~ 2.125 | 47/57-355 | |
| BCIS0532 | 20 x 1.75 ~ 2.125 | 47/57-406 | |
| BCIS0536 | 20 x 1.1/8 | 28/451 | |
| BCIS0537 | 20 x 1.3/8 | 37/451 | |
| BCIS0526 | 24 x 1.75 ~ 2.125 | 47/57-507 | |
| BCIS0538 | 26 x 1.00 ~ 1.25 | 26/32-559 | |
| TIT11101 | 26 x 1.50 ~ 1.75 | 40/47-559 | |
| BCIS0527 | 26 x 1.80 ~ 2.125 | 47/57-559 | |
| TIT11103 | 26 x 2.30 ~ 2.50 | 56/62-559 | |
| TIT11104 | 26 x 2.50 ~ 2.70 | 62/67-559 | |
| BCIS0539 | 29 x 1.90 ~ 2.35 | 44/52-622 | |
| BCIS0142 | 700 x 35 ~ 43C | 35/43-622 | |
| BCIS0548 | 27.5 x 1.90 ~ 2.35 | 44/52-584 | |

ENGLISH VALVE

| CODE | SIZE | ETRTO | VALVE |
|----------|------------------------------|-----------|-------|
| TIT07900 | 12.1/2 x 2.1/4 | 57-203 | 27mm |
| TIT08000 | 14 x 1.75 ~ 2.125 | 47/57-254 | |
| TIT08100 | 16 x 1.75 ~ 2.125 | 47/57-305 | |
| TIT08200 | 18 x 1.75 ~ 2.125 | 47/57-355 | |
| TIT08300 | 20 x 1.75 ~ 2.125 | 47/57-406 | |
| TIT08800 | 20 x 1.3/8 | 37-451 | |
| TIT08900 | 22 x 1.3/8 | 37-501 | |
| TIT08400 | 24 x 1.75 ~ 2.125 | 47/57-507 | |
| TIT09000 | 24 x 1.3/8 | 37-540 | |
| TIT11200 | 26 x 1.00 ~ 1.25 | 26/32-559 | |
| TIT11201 | 26 x 1.50 ~ 1.75 | 40/47-559 | |
| TIT11202 | 26 x 1.80 ~ 2.125 | 47/57-559 | |
| TIT09100 | 26 x 1.3/8 | 37-590 | |
| TIT12300 | 26 x 1.3/8 (Thickness:1.2mm) | 37-590 | |
| TIT09200 | 27 x 1.3/8 | 37-630 | |
| TIT12500 | 27 x 1.3/8 (Thickness:1.2mm) | 37-630 | |
| TIT11900 | 700 x 28 ~ 32C | 28/32-622 | |
| TIT09300 | 27 x 1.1/8 ~ 1.1/4 | 28/32-630 | 33mm |

FRENCH VALVE

| CODE | SIZE | ETRTO | VALVE |
|----------|--------------------|-----------|-------|
| TIT12002 | 20 x 1.50 ~ 1.75 | 36/41-406 | 36mm |
| TIT12003 | 20 x 1.75 ~ 2.125 | 47/57-406 | |
| BCIS0540 | 20 x 1.1/8 | 28-451 | |
| BCIS0541 | 20 x 1.3/8 | 37-451 | |
| BCIS0542 | 26 x 1.00 ~ 1.25 | 26/32-559 | |
| TIT11301 | 26 x 1.50 ~ 1.75 | 40/47-559 | |
| BCIS0529 | 26 x 1.80 ~ 2.125 | 47/57-559 | |
| TIT11303 | 26 x 2.30 ~ 2.50 | 56/62-559 | |
| BCIS0533 | 650 x 18 ~ 25C | 18/25-571 | |
| BCIS0534 | 700 x 18 ~ 26C | 18/26-622 | |
| TIT11401 | 700 x 28 ~ 32C | 28/32-622 | |
| BCIS0535 | 700 x 35 ~ 43C | 35/43-622 | |
| BCIS0543 | 29 x 1.90 ~ 2.35 | 44/52-622 | |
| BCIS0544 | 700 x 28 ~ 32C | 28/32-622 | |
| TIT10700 | 650 x 18 ~ 25C | 18/25-571 | |
| BCIS0525 | 700 x 18 ~ 26C | 18/26-622 | |
| BCIS0549 | 27.5 x 1.90 ~ 2.35 | 44/52-584 | 36mm |

FRENCH VALVE (ULTRA LIGHT)

| CODE | SIZE | ETRTO | VALVE | |
|----------|-------------------|-----------|-------|------|
| TIT11802 | 20 x 1.50 ~ 1.75 | 36/41-406 | 36mm | |
| TIT11803 | 20 x 1.90 ~ 2.125 | 47/57-406 | | |
| TIT11800 | 20 x 1.1/8 | 28-451 | | |
| TIT11801 | 20 x 1.3/8 | 37-451 | | |
| TIT11500 | 26 x 1.00 ~ 1.25 | 26/32-559 | | |
| TIT11501 | 26 x 1.50 ~ 1.75 | 40/47-559 | | |
| TIT11502 | 26 x 1.80 ~ 2.125 | 47/57-559 | | |
| TIT10500 | 650 x 18 ~ 25C | 18/25-571 | | |
| TIT10600 | 700 x 18 ~ 26C | 18/26-622 | | |
| TIT10900 | 700 x 18 ~ 26C | 18/26-622 | | |
| TIT11000 | 700 x 18 ~ 26C | 18/26-622 | | 48mm |
| | | | | 60mm |

GERMAN VALVE

| CODE | SIZE | ETRTO | VALVE |
|----------|--------------------|-----------|--------|
| R9IS0072 | 12.1/2 x 2.1/2 | 62-203 | 26.5mm |
| R9IS0074 | 14 x 1.3/8 | 37-288 | |
| R9IS0076 | 16 x 1.50 ~ 1.75 | 40/47-305 | |
| R9IS0078 | 18 x 1.50 ~ 1.75 | 40/47-355 | |
| R9IS0080 | 20 x 1.50 ~ 1.75 | 40/47-406 | |
| R9IS0084 | 20 x 1.90 ~ 2.125 | 47/57-406 | |
| R9IS0086 | 24 x 1.50 ~ 1.75 | 40/47-507 | |
| R9IS0090 | 24 x 1.90 ~ 2.125 | 47/57-507 | |
| R9IS0100 | 26 x 1.3/8 | 37-559 | |
| R9IS0105 | 26 x 1.50 ~ 1.75 | 40/47-559 | |
| R9IS0112 | 26 x 1.90 ~ 2.125 | 47/57-559 | |
| R9IS0120 | 27 x 1.1/8 ~ 1.1/4 | 28/32-630 | |
| R9IS0127 | 700 x 18 ~ 25C | 18/25-622 | |
| R9IS0135 | 700 x 25 ~ 32C | 25/32-622 | |
| R9IS0138 | 700 x 35 ~ 43C | 35/43-622 | |
| R9IS0113 | 26 x 1.90 ~ 2.125 | 47/57-559 | |
| R9IS0136 | 700 x 25 ~ 32C | 25/32-622 | 40mm |
| R9IS0139 | 700 x 35 ~ 43C | 35/43-622 | |

SPYDER STRATUM

Turning traditional saddle designs upside down in pursuit of cutting-edge performance and function, the Spyder Stratum's ingeniously engineered flexible shell achieves unmatched levels of comfort and performance by suspending the rider in a way not possible with traditional saddle designs. Manufactured with proprietary dual density material seamlessly fused together to form the most durable and energy-absorbent Spyder saddles ever.



SPYDER STRATUM S-SPEC CARBON RAIL

- Seamless 2-piece SpyderWeb Shell
- DualTech Carbonite
- Dual ArcFlex Rail Support
- Full Carbon-Fiber Rail
- L285 x W135 x H50mm
- 120g

| CODE | COLOR |
|----------|-------|
| R9IU0334 | Black |
| R9IU0335 | White |



SPYDER STRATUM HOLLOW CHROMOLY RAIL

- Seamless 2-piece SpyderWeb Shell
- DualTech Carbonite
- Hollow Chromoly Rail
- L285 x W135 x H50mm
- 190g

| CODE | COLOR |
|----------|-------|
| R9IU0336 | Black |
| R9IU0337 | White |



SPYDER TWIN TAIL

- Spyder Web Carbonite Shell
- Hollow Composite Alloy Rail
- Dual ArcFlex Rail Support
- L285 x W135 x H45mm
- 140g



| CODE | COLOR |
|----------|-------|
| R9IU0219 | Black |
| R9IU0237 | White |



SPYDER SADDLE

- Spyder Web Carbonite Shell
- Hollow Composite Alloy Rail
- ArcFlex Rail Support
- L270 x W125 x H55mm
- 160g

| CODE | COLOR |
|----------|-------|
| R9IU0235 | Black |
| R9IU0236 | White |





D-SPYDER SADDLE

- Spyder Web Mesh Design
- Position Conscious Form
- Hollow Composite Alloy Rails
- Dual ArcFlex Rail Support
- L250 x W130 x H43mm
- 165g (Black, White, Green, Pink), 160g(Clear)

| CODE | COLOR |
|----------|-------|
| R9IU0240 | Black |
| R9IU0241 | White |
| R9IU0264 | Green |
| R9IU0306 | Pink |
| SDL15005 | Clear |



PIVOTAL D-SPYDER SADDLE S-SPEC

- Spyder Web Carbonite Shell
- Blue Anodized Hollow Alloy Bolt
- Blue Anodized Hollow Alloy Rocker Plate
- Includes Bolt Cover Cap
- L235 x W125 x H43mm
- 171g

| CODE | COLOR |
|----------|-------|
| R9IU0235 | Black |
| R9IU0236 | White |



PIVOTAL MC SADDLE

- Direct Bolt-on System without rail
- Vinyl Top(Black),PU Top(C.P.)
- Hydro Seal(C.P. Only)
- L232 x W134 x H62mm
- 265g

| CODE | COLOR |
|----------|-------|
| SDL18600 | Black |
| SDL18601 | C.P. |



PIVOTAL MX COMP SADDLE

- Direct Bolt-On System without rail
- PVC top with Aramid fiber on rear
- Hydro Seal
- L232 x W134 x H62mm
- 265g

| CODE | COLOR |
|----------|--------|
| R9IU0321 | White |
| R9IU0322 | Orange |



STR SADDLE

- Micro Fiber Top
- ArcFlex Rail Support
- Hydro Seal
- Hollow Chromoly Rails
- L280 x W128 x H55mm
- 255g

| CODE | COLOR |
|----------|-------|
| R9IU0325 | Black |
| R9IU0326 | White |



STC SADDLE

- Micro Fiber Top
- ArcFlex Rail Support
- Hydro Seal
- Hollow Chromoly Rails
- L280 x W143 x H65mm
- 277g

| CODE | COLOR |
|----------|-------|
| SDL17300 | Black |
| SDL17301 | White |



MC X COMFORT

- PU Leather Top
- ArcFlex Rail Support
- Hydro Seal
- Steel Rails
- L280 x W140 x H80mm
- 360g

| CODE | COLOR |
|----------|-------|
| SDL15200 | Black |
| SDL15201 | White |



PRIMP SADDLE

- Poly Vinyl Top with Aramid fiber(Black,White), Poly Vinyl + Micro Fiber Top(Green), Acrylic Fiber with Aramid fiber(Hound's Tooth,Herringbone), PET FiberTop (Leopard)
- Ø8mm Steel Rails
- L250 x W142 x H85mm
- 307g


| CODE | COLOR |
|----------|---------------|
| R9IU0323 | Black |
| R9IU0324 | White |
| SDL17702 | Green |
| SDL17703 | Hound's Tooth |
| SDL17704 | Herringbone |
| SDL17705 | Leopard |


FORTIS


TIOGA Acentia

| CODE | COLOR |
|----------|-------|
| R9IU0251 | Black |
| R9IU0276 | White |
| R9IU0317 | Brown |

- Sit-Bone Width : 70 ~ 130mm
- In-mold Forming with Gel Insert
- Resin Bumper & Nose Cover
- Steel Rails
- L285 x W155mm
- 433g

 Injection molded one piece construction

 Silicon gel pads provide more comfort & support for the sit bones

 ArcFlex rail support system to lessen impacts





GEMINUS


TIOGA Acentia

| CODE | COLOR |
|----------|-------|
| R9IU0253 | Black |
| R9IU0278 | White |
| R9IU0319 | Brown |

- Sit-Bone Width : 70 ~ 150mm
- In-mold Forming with Gel Insert
- Resin Bumper & Nose Cover
- Steel Rails
- L270 x W175mm
- 493g

 Injection molded one piece construction

 Silicon gel pads provide more comfort & support for the sit bones

 ArcFlex rail support system to lessen impacts




FORTIS AURA


TIOGA Acentia


| CODE | COLOR |
|----------|-------|
| R9IU0252 | Black |
| R9IU0277 | White |
| R9IU0318 | Brown |

- Sit-Bone Width : 70 ~ 140mm
- In-mold Forming with Gel Insert
- Resin Bumper & Nose Cover
- Steel Rails
- L275 x W165mm
- 434g

 Injection molded one piece construction

 Silicon gel pads provide more comfort & support for the sit bones

 ArcFlex rail support system to lessen impacts

 Cutout placed at the center for ventilation & alleviating pressure on the perineum




GEMINUS AURA

TIOGA Acentia


| CODE | COLOR |
|----------|-------|
| R9IU0254 | Black |
| R9IU0279 | White |
| R9IU0320 | Brown |

- Sit-Bone Width : 70 ~ 160mm
- In-mold Forming with Gel Insert
- Resin Bumper & Nose Cover
- Steel Rails
- L260 x W180mm
- 464g

 Injection molded one piece construction

 Silicon gel pads provide more comfort & support for the sit bones

 ArcFlex rail support system to lessen impacts

 Cutout placed at the center for ventilation & alleviating pressure on the perineum



URBANI

TIGGA Acentia

| CODE | COLOR |
|----------|-------|
| R9IU0255 | Black |
| R9IU0280 | White |

- Sit-Bone Width : 70 ~ 170mm
- In-mold Forming with Gel Insert
- Resin Bumper & Nose Cover
- Steel Rails
- L275 x W190mm
- 535g



Injection molded one piece construction



Silicon gel pads provide more comfort & support for the sit bones



Softening material layered on the ArcFlex rail support and the base



PAX

TIGGA Acentia

| CODE | COLOR |
|----------|-------|
| R9IU0252 | Black |
| R9IU0277 | White |

- Sit-Bone Width : 70 ~ 190mm
- In-mold Forming with Gel Insert
- Resin Bumper & Nose Cover
- Steel Rails
- L280 x W210mm
- 767g



Injection molded one piece construction



Silicon gel pads provide more comfort & support for the sit bones



Elastomer spring for shock absorbing



URBANI AURA

TIGGA Acentia

| CODE | COLOR |
|----------|-------|
| R9IU0256 | Black |
| R9IU0281 | White |

- Sit-Bone Width : 70 ~ 180mm
- In-mold Forming with Gel Insert
- Resin Bumper & Nose Cover
- Steel Rails
- L270 x W200mm
- 535g



Injection molded one piece construction



Silicon gel pads provide more comfort & support for the sit bones



Softening material layered on the ArcFlex rail support and the base



Cutout placed at the center for ventilation & alleviating pressure on the perineum



PAX AURA

TIGGA Acentia

| CODE | COLOR |
|----------|-------|
| R9IU0258 | Black |
| R9IU0283 | White |

- Sit-Bone Width : 70 ~ 200mm
- In-mold Forming with Gel Insert
- Resin Bumper & Nose Cover
- Steel Rails
- L275 x W220mm
- 744g



Injection molded one piece construction



Silicon gel pads provide more comfort & support for the sit bones



Elastomer spring for shock absorbing



Cutout placed at the center for ventilation & alleviating pressure on the perineum





CARBO SEAT POST

• Full Carbon Post with Alloy Clamp

| CODE | SIZE | LENGTH | WEIGHT |
|----------|---------|--------|--------|
| SPT04800 | Ø27.2mm | 300mm | 195g |
| SPT04801 | Ø31.6mm | | 230g |



T-BONE CARBO

• 6061-T6 Forged Alloy Head
• Carbon Post

| CODE | SIZE | LENGTH | WEIGHT |
|----------|---------|--------|--------|
| R9DG0163 | Ø26.8mm | | 230g |
| R9DG0164 | Ø27.2mm | 350mm | 235g |
| R9DG0180 | Ø31.6mm | | 275g |

D-LITE PIVOTAL POST

• Nylon with Alloy Tube Insert
• Direct Bolt-On System

| CODE | COLOR | SIZE | LENGTH | WEIGHT |
|----------|-------|---------|--------|--------|
| R9DG0198 | Black | Ø25.4mm | 75mm | 55g |
| R9DG0199 | White | | | |
| R9DG0202 | Black | Ø25.4mm | 135mm | 88g |
| R9DG0203 | White | | | |



T-BONE

• 6061-T6 Forged Alloy Head
• 6061-T6 Alloy Post

| CODE | SIZE | LENGTH | WEIGHT |
|----------|---------|--------|--------|
| SPT05600 | Ø26.8mm | | 240g |
| SPT05601 | Ø27.0mm | | 245g |
| SPT05602 | Ø27.2mm | 350mm | 240g |
| SPT05604 | Ø30.9mm | | 265g |
| SPT05603 | Ø31.6mm | | 270g |



AL2000

• 6061-T6 Forged Alloy Head
• 6061-T6 Alloy Post

| CODE | COLOR | SIZE | LENGTH | WEIGHT | |
|------------|--------|---------|--------|--------|--|
| R9DG0170 | Black | Ø26.4mm | | 282g | |
| R9DG0171 | | Ø26.6mm | | 284g | |
| R9DG0172 | | Ø26.8mm | | 286g | |
| R9DG0173 | | Ø27.0mm | | 288g | |
| R9DG0174 | Black | Ø27.2mm | 300mm | 290g | |
| * SPT05700 | Silver | | | | |
| R9DG0175 | | Ø29.4mm | | 332g | |
| R9DG0176 | | Ø29.6mm | | 334g | |
| R9DG0177 | Black | Ø30.4mm | | 336g | |
| R9DG0178 | | Ø30.9mm | | 338g | |
| R9DG0179 | | Ø31.6mm | | 340g | |

* Newly Added



T-BONE PIVOTAL SEATPOST

• 6061-T6 Forged Alloy
• Direct Bolt-On System

| CODE | SIZE | LENGTH | WEIGHT |
|----------|---------|--------|--------|
| R9DG0182 | Ø25.4mm | 130mm | 98g |
| R9DG0196 | Ø27.2mm | 320mm | 205g |
| R9DG0197 | Ø31.6mm | | 210g |



T-BONE MX SEATPOST

• Chromoly

| CODE | SIZE | LENGTH | WEIGHT |
|----------|---------|--------|--------|
| R9DG0189 | Ø25.4mm | 300mm | 470g |
| R9DG0190 | | 400mm | 560g |



CARBO RISE 318

- Carbon
- 20mm Rise
- 10° Backswept
- 660mm
- 180g

| CODE | CLAMP DIA. |
|----------|------------|
| R9HD0195 | Ø31.8mm |



CARBO RISE 254

- Carbon
- 20mm Rise
- 10° Backswept
- 660mm
- 170g

| CODE | CLAMP DIA. |
|----------|------------|
| R9HD0198 | Ø25.4mm |



CARBO FLAT 318

- Carbon
- 0mm Rise
- 5° Backswept
- 580mm
- 115g

| CODE | CLAMP DIA. |
|----------|------------|
| R9HD0200 | Ø31.8mm |



CARBO FLAT 254

- Carbon
- 0mm Rise
- 5° Backswept
- 580mm
- 160g

| CODE | CLAMP DIA. |
|----------|------------|
| R9HD0203 | Ø25.4mm |



75 rise/a

- 6061 Alloy
- Double Butted
- 75mm Rise
- 6° Backswept
- 720mm
- 362g

| CODE | CLAMP DIA. |
|----------|------------|
| HBR12800 | Ø25.4mm |



60 rise/a

- 6061 Alloy
- Double Butted
- 60mm Rise
- 6° Backswept
- 710mm
- 351g

| CODE | CLAMP DIA. |
|----------|------------|
| R9HD0314 | Ø25.4mm |



40 rise/d

- 7075 Alloy
- Triple Butted
- 40mm Rise
- 9° Backswept
- 680mm
- 256g

| CODE | CLAMP DIA. |
|----------|------------|
| HBR12300 | Ø31.8mm |



25 rise/d

- 7050 Alloy
- Triple Butted
- 25mm Rise
- 9° Backswept
- 680mm
- 254g

| CODE | CLAMP DIA. |
|----------|------------|
| R9ZA1060 | Ø31.8mm |



00 rise/d

- 7050 Alloy
- Double Butted(Ø25.4mm), Triple Butted(Ø31.8mm)
- 0mm Rise
- 5° Backswept
- 580mm
- 170g(Ø25.4mm), 140g(Ø31.8mm)

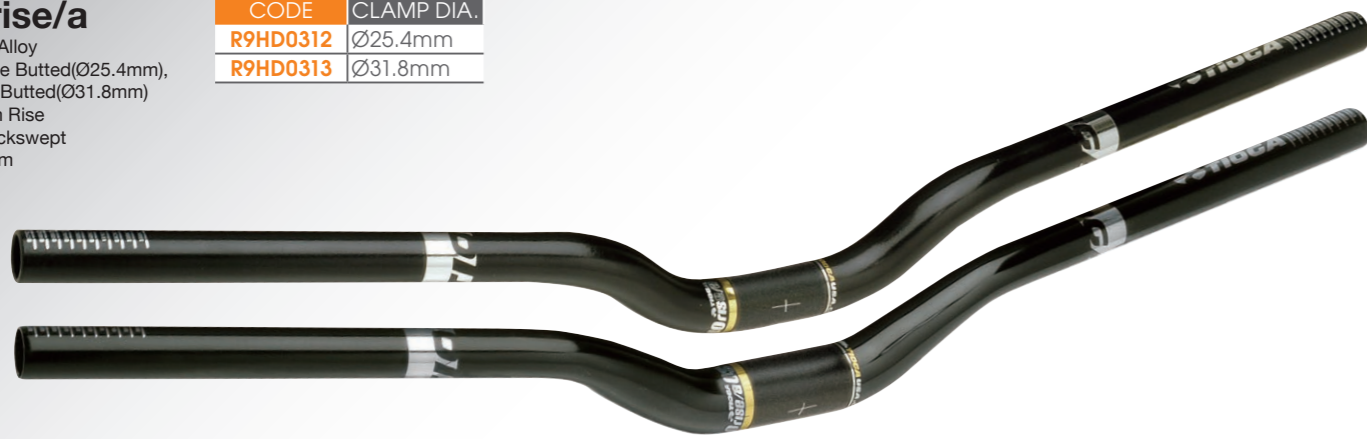
| CODE | CLAMP DIA. |
|----------|------------|
| R9HD0323 | Ø25.4mm |
| HBR12101 | Ø31.8mm |



35 rise/a

- 6061 Alloy
- Double Butted(Ø25.4mm), Triple Butted(Ø31.8mm)
- 40mm Rise
- 9° Backswept
- 710mm

| CODE | CLAMP DIA. |
|----------|------------|
| R9HD0312 | Ø25.4mm |
| R9HD0313 | Ø31.8mm |

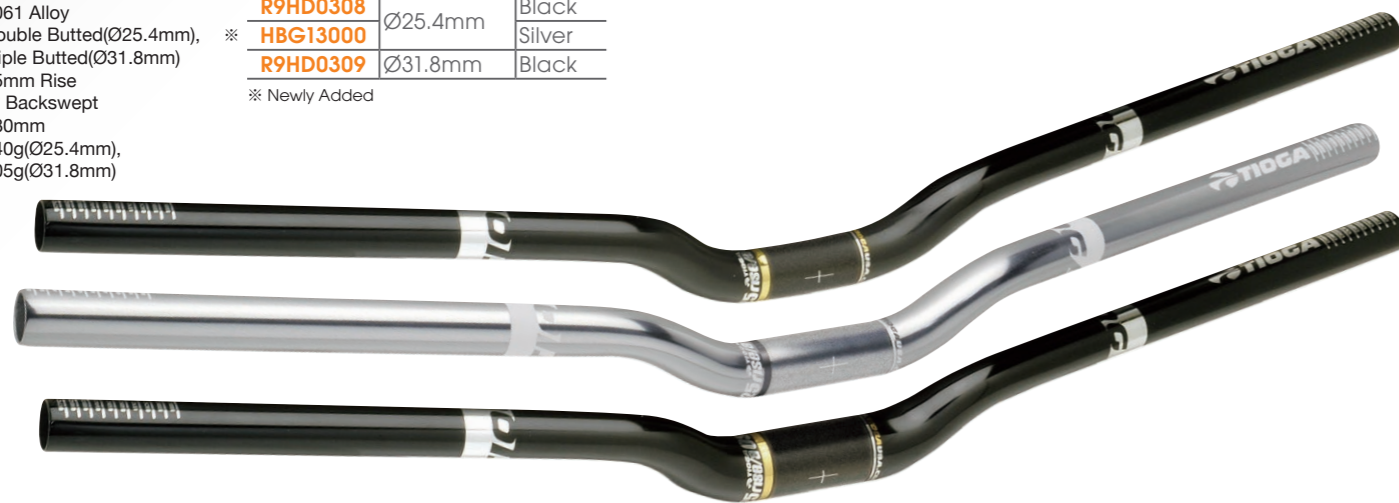


25 rise/a

- 6061 Alloy
- Double Butted(Ø25.4mm), Triple Butted(Ø31.8mm)
- 25mm Rise
- 9° Backswept
- 680mm
- 340g(Ø25.4mm), 305g(Ø31.8mm)

| CODE | CLAMP DIA. | COLOR |
|------------|------------|--------|
| R9HD0308 | Ø25.4mm | Black |
| ※ HBG13000 | Ø25.4mm | Silver |
| R9HD0309 | Ø31.8mm | Black |

※ Newly Added



00 rise/a

- 6061 Alloy
- Double Butted
- 0mm Rise
- 5° Backswept
- 560mm
- 185g(Ø25.4mm), 180g(Ø31.8mm)

| CODE | CLAMP DIA. | COLOR |
|------------|------------|--------|
| HBR12400 | Ø25.4mm | Black |
| ※ HBR12900 | Ø25.4mm | Silver |
| HBR12401 | Ø31.8mm | Black |

※ Newly Added



MX COMP C 8.0-8

- CrMo 11 butted
- 205mm Rise
- 8° Backswept
- 710mm

| CODE | CLAMP DIA. |
|----------|------------|
| HBR10000 | Ø22.2mm |



MX COMP C 7.5-8

- CrMo 11 butted
- 190mm Rise
- 8° Backswept
- 710mm

| CODE | CLAMP DIA. |
|----------|------------|
| HBR10100 | Ø22.2mm |



MX COMP C 6.7-3

- CrMo 11 butted
- 170mm Rise
- 3° Backswept
- 680mm

| CODE | CLAMP DIA. |
|----------|------------|
| HBR10300 | Ø22.2mm |



MX COMP C 5.5-8

- CrMo 11 butted
- 140mm Rise
- 8° Backswept
- 670mm

| CODE | CLAMP DIA. |
|----------|------------|
| HBR10200 | Ø22.2mm |





T-BONE

- 7050-T731 Forged + CNC Alloy Body
- 7050-T731 Forged + CNC Alloy Cup
- Ø28.6mm Steering Column Clamp Dia.
- 40mm Stack Height
- 108g(80mm)

| CODE | EXTENSION | CLAMP DIA. | ANGLE |
|----------|-----------|------------|---------|
| R9ZA1084 | 80mm | Ø22.2mm | 84°/96° |
| R9ZA1085 | 90mm | | |
| R9ZA1086 | 100mm | | |

AL NINE

- 6061-T6 Forged Alloy Body
- 6061-T6 Forged Alloy Cup
- Ø28.6mm Steering Column Clamp Dia.
- 40mm Stack Height(84°/96°, 73°/107°), 45mm Stack Height(55°/125°)
- 140g(80mm)

| CODE | EXTENSION | CLAMP DIA. | ANGLE | COLOR | | |
|------------|-----------|------------|----------|---------|---------|-------|
| * R9HE0794 | 50mm | Ø25.4mm | 84°/96° | Black | | |
| * R9HE0795 | 60mm | | | | | |
| * R9HE0796 | 70mm | | | | | |
| * R9ZA1070 | 80mm | | | | | |
| * R9HE0798 | 90mm | | | | | |
| * R9ZA1071 | 100mm | | | | | |
| * HBN10100 | 80mm | Ø26.0mm | 55°/125° | Silver | | |
| * HBN10101 | 100mm | | | | | |
| HBN09400 | 80mm | | | | | |
| HBN09401 | 100mm | | | | | |
| * HBN09502 | 60mm | | | Ø31.8mm | 84°/96° | Black |
| R9ZA1074 | 80mm | | | | | |
| R9ZA1075 | 100mm | | | | | |
| * HBN10200 | 80mm | | | | | |
| * HBN10201 | 100mm | | | | | |
| HBN09600 | 80mm | | | | | |
| HBN09601 | 100mm | 73°/107° | Black | | | |
| * R9HE0799 | 50mm | | | | | |
| * R9HE0800 | 60mm | | | | | |
| * R9HE0801 | 70mm | | | | | |
| * R9ZA1080 | 80mm | | | | | |
| * R9HE0803 | 90mm | | 73°/107° | Black | | |
| R9ZA1083 | 100mm | | | | | |
| HBN09800 | 80mm | | | | | |
| HBN09801 | 100mm | | | | | |
| HBN09900 | 80mm | | | | | |
| HBN09901 | 100mm | 55°/125° | | | | |

* Newly Added



CNC X BONE

- 2014-T6 CNC Alloy Body
- 2014-T6 Forged Alloy Cup
- Ø28.6mm Steering Column Clamp Dia.
- 38mm Stack Height
- 180g(90mm)

| CODE | EXTENSION | CLAMP DIA. | ANGLE |
|----------|-----------|------------------------|------------------------|
| HBN07800 | 80mm | Ø25.4mm | 75°/105° (for MTB) |
| HBN07801 | 90mm | | |
| HBN07802 | 100mm | | |
| HBN07803 | 110mm | Ø31.8mm | |
| HBN07900 | 80mm | | |
| HBN07901 | 90mm | | |
| HBN07902 | 100mm | Ø25.4mm | 75°/105° (for ROAD) |
| HBN07903 | 110mm | | |
| HBN08000 | 90mm | | |
| HBN08001 | 100mm | Ø26.0mm | |
| HBN08002 | 110mm | | |
| HBN08100 | 90mm | | |
| HBN08101 | 100mm | Ø31.8mm | 45°/135° (for ROAD) |
| HBN08102 | 110mm | | |
| HBN08200 | 90mm | | |
| HBN08201 | 100mm | Ø31.8mm | |
| HBN08202 | 110mm | | |
| HBN08300 | 105mm | | |
| HBN08400 | 90mm | 40°/140° (for ROAD) | |



X CUBE

- 6061-T6 CNC Alloy Body & Cup
- Ø28.6mm Steering Column Clamp Dia.
- 45mm Stack Height
- 130g

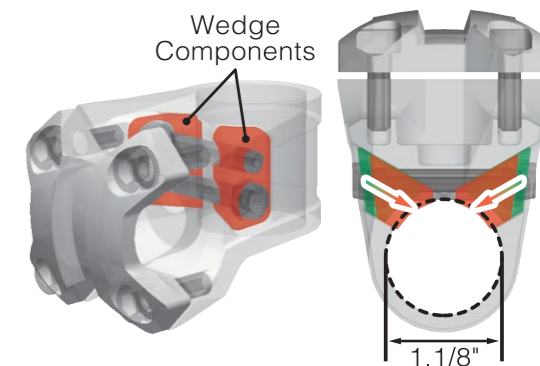
| CODE | EXTENSION | CLAMP DIA. | ANGLE |
|----------|-----------|------------|-------|
| HBN07700 | 27.5mm | Ø22.2mm | 90° |



NIGHTHAWK

- 6061-T6 Alloy Body
- 6061-T6 Forged Alloy Cup
- Ø28.6mm Steering Column Clamp Dia.
- 30mm Stack Height
- 195g(45mm)

| CODE | EXTENSION | CLAMP DIA. | ANGLE |
|----------|-----------|------------|-------|
| HBN09200 | 37.5mm | Ø22.2mm | 80° |
| HBN09201 | 45mm | | |



RADIAL WEDGE SYSTEM

Turning the allen bolts activate the angular wedge of the internal clamping system and effectively secures the Nighthawk stem onto steer tube.



TECHNO GLIDE DH CODE
HDN03300

- for 1.1/8" Steering Column
- Stainless Steel Cups & Crown Cones
- Stainless Steel Cartridge Bearings
- Alloy Anchor Set
- 30.5mm Stack Height
- 190.5g
- Stainless Steel Self Color



TG3 CODE COLOR

| | |
|---|--------|
| HDN05700 | Black |
| HDN05701 | Silver |

- for 1.1/8" Steering Column
- Steel Cups
- Ball Retainers 5/32" x 22
- Resin Anchor Set
- 23.4mm Stack Height
- 109g



NS CODE
HDN03900

- for 1.1/8" Steering Column
- Alloy Cups
- Cartridge Bearings
- Alloy Anchor Set
- 11mm Stack Height
- Cup Outer Diameter : Ø44mm
- 74g



TECHNO GLIDE CODE COLOR

| | |
|---|--------|
| HDN05800 | Black |
| HDN05801 | Silver |

- for 1.1/8" Steering Column
- 7075-T6 Alloy Cups
- Stainless Steel Crown Cones
- Stainless Steel Cartridge Bearings
- Alloy Anchor Set
- 28.3mm Stack Height
- 97g

BEAR TRAP 2 CODE
HDS00600

- for 1" Threaded Steering Column
- Steel Cups
- Ball Retainers 3/16" x 15
- 41.0mm Stack Height
- 186g
- C.P.



CARBON ANCHOR SET CODE
HDA00800

- Carbon Cap
- Stainless bolt
- 22g



YHD00400 (for LA4) CODE
YHD00400

- Set of 2 pcs
- for 1.5" Steering Column
- Bearing Outer Diameter : Ø41.0mm
- 25° Angular Cut



LAV82D CODE
HDN06000

- for 1.1/8" Steering Column
- 7075-T6 Alloy Cups
- Bearings : Cartridge Bearings(Upper)
Dual Cartridge Bearings(Lower)
- Alloy Anchor Set
- 31.0mm Stack Height
- 100g



EZ CODE
HDN04300

- for 1.1/8" Steering Column
- 7075-T6 Alloy Cups
- Cartridge Bearings
- Alloy Anchor Set
- 28.3mm Stack Height
- 91g

CARBON SPACER CODE SIZE

| | |
|---|------|
| R9ZA1104 | 5mm |
| R9ZA1105 | 10mm |



AL SPACER CODE COLOR SIZE

| | | |
|---|--------|------|
| HDW01100 | Black | 1mm |
| HDW01101 | Silver | |
| HDW01200 | Black | 2mm |
| HDW01201 | Silver | |
| HDW01300 | Black | 4mm |
| HDW01301 | Silver | |
| HDW01400 | Black | 8mm |
| HDW01401 | Silver | |
| HDW01500 | Black | 10mm |
| HDW01501 | Silver | |
| HDW01600 | Black | 15mm |
| HDW01601 | Silver | |



ACC-1 CODE
R9DA0066

- for 1.1/8" Steering Column
- Alloy Cups
- Cartridge Bearings
- Alloy Anchor Set
- 24.8mm Stack Height
- 87g



ARR-1 CODE
HDN04800

- for 1.1/8" Steering Column
- Alloy Cups
- Ball Retainers 5/32" x 22
- Alloy Anchor Set
- 26.1mm Stack Height
- 99g

AL SPACER SET CODE COLOR

| | |
|---|--------|
| HDW02200 | Black |
| HDW02201 | Silver |

- 6061 Alloy CNC
- Set of 4 pcs (1, 2, 4 & 8mm)
- 10g

4 spacers allow a combination of size ranges from 1mm - 15mm

| Spacer | 1mm | 2mm | 3mm | 4mm | 5mm | 6mm | 7mm | 8mm | 9mm | 10mm | 11mm | 12mm | 13mm | 14mm | 15mm |
|--------|-----|-----|-----|-----|-----|-----|-----|-----|-----|------|------|------|------|------|------|
| 1mm | • | | | | | | | | | | | | | | |
| 2mm | | • | | | | | | | | | | | | | |
| 4mm | | | • | • | • | • | • | • | • | • | • | • | • | • | • |
| 8mm | | | | | | • | • | • | • | • | • | • | • | • | • |





Bioergonomic Grips

- Anatomically shaped to match the natural contours of the gripping hand.
- Patented multi-radii design (U.S. Patent Number 4,964,192) allows greater control and improved handling even for riders with small hands.
- Variable thickness places padding where it is needed most for maximum shock absorption.
- Non-slip flared ends.
- Constructed of ultraviolet resistant VEXK rubber compound.



BIOGRIP

- VEXK Rubber
- Ergonomic Design
- Closed End
- 130mm
- 85g/Pair

| CODE | COLOR |
|----------|------------|
| R9HF0255 | Black |
| R9HF0269 | White |
| R9HF0270 | Red |
| R9HF0271 | Lime Green |
| R9HF0272 | Brown |

※ Newly Added

LOCK-ON BIOGRIP

- VEXK Rubber
- Ergonomic Design
- Aluminum Lock-On System (10mm width Lock-Rings)
- Closed End
- 130mm
- 90g/Pair

| CODE | COLOR |
|----------|------------|
| R9HF0256 | Black |
| R9HF0265 | White |
| R9HF0266 | Red |
| R9HF0267 | Lime Green |
| R9HF0268 | Brown |

※ Newly Added

SEIZER

- Kraton Rubber(Outer) / Nylon(Inner)
- Aluminum Lock-On System (10mm width Lock-Rings to both inside and outside)
- Slanted Diamond Pattern
- 135mm
- 118g/Pair

| CODE | COLOR |
|----------|-------|
| R9HF0184 | Black |



TIOGA LOGO

- Kraton Rubber(Outer) / Nylon(Inner)
- Aluminum Lock-On System (10mm width Lock-Rings to both inside and outside)

STANDARD TYPE

- 135mm
- 123g/Pair

| CODE | COLOR |
|----------|-------|
| R9HF0185 | Black |

LONG TYPE

- 155mm
- 135g/Pair

| CODE | COLOR |
|----------|-------|
| R9HF0173 | Black |



LOCK-ON SLIM GRIP

- Kraton Rubber(Outer) / Nylon(Inner)
- Aluminum Lock-On System (inside : 9.5mm width Lock-Rings / outside : 11mm width Lock-Rings)
- Slanted Diamond Pattern
- Open End with End Plugs
- 135mm
- 122g / Pair(within End Plugs / Lock Rings)

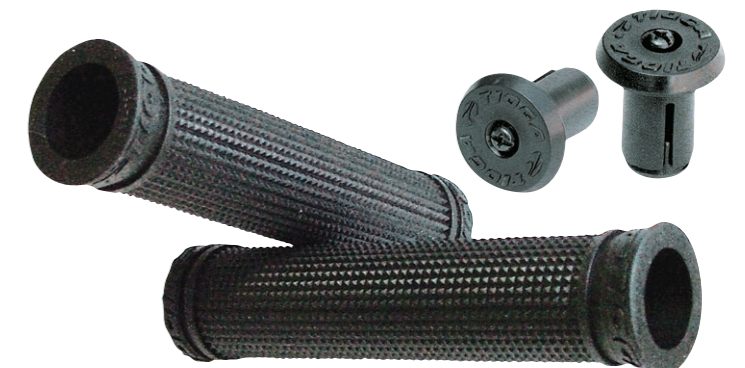
| CODE | COLOR |
|----------|------------|
| R9HF0169 | Black |
| R9HF0246 | White |
| R9HF0247 | Blue |
| R9HF0248 | Pink |
| R9HF0249 | Green |
| R9HF0250 | Yellow |
| R9HF0251 | Light Gray |



ULTRA SLIM GRIP

- Kraton Rubber
- Slanted Diamond Pattern
- Open End with End Plugs
- 120mm

| CODE | COLOR |
|----------|-------|
| R9HF0163 | Black |



PULP GRIP

- Kraton Rubber
- Open End with End Plugs
- 120mm

| CODE | COLOR |
|----------|--------|
| R9HF0168 | Black |
| R9HF0167 | White |
| R9HF0164 | Blue |
| R9HF0165 | Red |
| R9HF0166 | Yellow |



GRITTY

- Kraton Rubber
- Open End with End Plugs
- 120mm

| CODE | COLOR |
|----------|--------|
| R9HF0125 | Blue |
| R9HF0124 | Red |
| R9HF0126 | Yellow |
| R9HF0123 | Gray |



MUSHY

- Kraton Rubber
- Open End with End Plugs
- 120mm

| CODE | COLOR |
|----------|--------|
| R9HF0252 | White |
| R9HF0119 | Blue |
| R9HF0124 | Red |
| R9HF0126 | Yellow |
| R9HF0123 | Gray |



E GRIP

TIGCA Acentia

122mm / 122mm

- Kraton Rubber(Outer) / Nylon(Inner)
- Aluminum Lock-On System (11mm width Lock-Rings to inside)
- Open End with End Plugs
- 122mm
- 120g/Pair

| CODE | COLOR |
|----------|------------|
| HBG15700 | Black |
| HBG15701 | Light Gray |
| HBG15702 | Dark Gray |



122mm / 92mm

- Kraton Rubber(Outer) / Nylon(Inner)
- Aluminum Lock-On System (11mm width Lock-Ring to inside / Left) (11mm width Lock-Ring to outside / Right)
- Open End with End Plugs
- 122mm(Left),92mm(Right)
- 105g/Pair

| CODE | COLOR |
|----------|------------|
| HBG15800 | Black |
| HBG15801 | Light Gray |
| HBG15802 | Dark Gray |



92mm / 92mm

- Kraton Rubber(Outer) / Nylon(Inner)
- Aluminum Lock-On System (11mm width Lock-Rings to outside)
- Open End with End Plugs
- 92mm
- 90g/Pair

| CODE | COLOR |
|----------|------------|
| HBG15900 | Black |
| HBG15901 | Light Gray |
| HBG15902 | Dark Gray |



CARBO ERGO BAREND

CODE
R9DH0045

- Carbon
- Ø30.5mm Grip Diameter
- Includes End Cups
- 114mm
- 115g/Pair



CARBO BAREND

CODE
R9DH0054

- Carbon
- Ø22.2mm Grip Diameter
- Includes End Cups
- 120mm
- 130g/Pair



POWERSTUDS 7

CODE
R9DH0029
R9DH0030

COLOR
Black
Silver

- Forged Alloy
- Ø22.2mm Grip Diameter
- Includes End Cups
- 110mm
- 130g/Pair



POWERSTUDS 6

CODE
R9DH0011
R9DH0012

COLOR
Black
Silver

- Forged Alloy
- Ø28.6mm Grip Diameter
- Includes End Cups
- 110mm
- 192g/Pair



POWERSTUDS 5

CODE
R9DH0041
R9DH0040
R9DH0053

COLOR
Black
Silver
White

- Forged Alloy
- Ø22.2mm Grip Diameter
- Includes End Cups
- 88mm
- 110g/Pair



POWERSTUDS 6 MINI

CODE
R9DH0016
R9DH0017

COLOR
Black
Silver

- Forged Alloy
- Ø28.6mm Grip Diameter
- Includes End Cups
- 60mm
- 120g/Pair





CHAINRING (for 4 arm / PCD : 104mm)

- Aluminum
- 7-9 Speed Compatible
- Silver

| CODE | SIZE |
|----------|------|
| CKR04000 | 32T |
| CKR04100 | 36T |
| CKR04200 | 38T |
| CKR04300 | 44T |
| CKR04400 | 48T |



CHAINRING (for 4 arm / PCD : 64mm)

- Aluminum
- 7-9 Speed Compatible
- Silver

| CODE | SIZE |
|----------|------|
| R9ZA0910 | 22T |
| CKR03800 | 24T |
| CKR03900 | 26T |



CHAINRING (for 5 arm / PCD : 130mm)

- Aluminum
- 7-9 Speed Compatible
- Silver

| CODE | SIZE |
|----------|------|
| CKR05400 | 46T |
| CKR05500 | 48T |
| CKR05600 | 50T |
| R9ZA0930 | 52T |



CHAINRING (for 5 arm / PCD : 110mm)

- Aluminum
- 7-9 Speed Compatible
- Silver

| CODE | SIZE |
|----------|------|
| R9ZA0919 | 34T |
| R9ZA0920 | 36T |
| R9ZA0921 | 38T |
| R9ZA0922 | 46T |
| R9ZA0923 | 48T |
| R9ZA0924 | 50T |
| CKR05200 | 52T |

CHAINRING (for 5 arm / PCD : 74mm)

- Aluminum
- 7-9 Speed Compatible
- Silver

| CODE | SIZE |
|----------|------|
| CKR04500 | 30T |



CNC QUICK RELEASE SET (2 PIECE SET)

O.L.D. : 130mm

- Front / Rear Set
- O.L.D. : 100mm(Front) / 130mm(Rear)
- Steel Shaft
- 51.5g

| CODE | COLOR |
|----------|----------|
| HUA02000 | Black |
| HUA02001 | Silver |
| R9ZA1015 | Gold |
| R9ZA1016 | Gunmetal |
| HUA02004 | Blue |
| HUA02005 | Red |



O.L.D. : 135mm

- Front / Rear Set
- O.L.D. : 100mm(Front) / 135mm(Rear)
- Steel Shaft
- 52g

| CODE | COLOR |
|----------|----------|
| R9DH0055 | Black |
| R9DH0057 | Silver |
| HUA02102 | Gold |
| HUA02103 | Gunmetal |
| R9DH0058 | Blue |
| R9DH0056 | Red |



CNC QUICK RELEASE SET (3 PIECE SET)

- Front / Rear / Seat Pin Set
- O.L.D. : 100mm(Front) / 135mm(Rear)
- Steel Shaft
- 74g

| CODE | COLOR |
|----------|----------|
| R9ZA1025 | Black |
| R9ZA1026 | Silver |
| R9ZA1027 | Gold |
| R9ZA1028 | Gunmetal |
| R9ZA1029 | Blue |
| R9ZA1030 | Red |



CNC QUICK SEAT PIN

- Steel Shaft
- 22g

| CODE | COLOR |
|----------|----------|
| SPS01400 | Black |
| SPS01401 | Silver |
| SPS01402 | Gold |
| SPS01403 | Gunmetal |
| SPS01404 | Blue |
| SPS01405 | Red |



CNC SEAT CLAMP

- 6061-T6 Alloy
- 32g

| CODE | SIZE | COLOR |
|----------|---------|----------|
| SPC01900 | Ø28.6mm | |
| R9DH0059 | Ø31.8mm | Black |
| R9ZA1005 | Ø34.9mm | |
| SPC01901 | Ø28.6mm | Silver |
| R9ZA1000 | Ø31.8mm | |
| R9ZA1006 | Ø34.9mm | |
| SPC01902 | Ø28.6mm | |
| R9ZA1001 | Ø31.8mm | Gold |
| R9ZA1007 | Ø34.9mm | |
| SPC01903 | Ø28.6mm | |
| R9ZA1002 | Ø31.8mm | Gunmetal |
| R9ZA1008 | Ø34.9mm | |
| SPC01904 | Ø28.6mm | |
| R9ZA1003 | Ø31.8mm | Blue |
| R9ZA1009 | Ø34.9mm | |
| SPC01905 | Ø28.6mm | |
| R9ZA1004 | Ø31.8mm | Red |
| R9ZA1010 | Ø34.9mm | |



CURVED QUICK RELEASE SET (2 PIECE SET)

- Front / Rear Set
- O.L.D. : 100mm(Front) / 135mm(Rear)
- Steel Shaft
- 114g

| CODE | COLOR |
|----------|----------|
| R9ZA1097 | Black |
| R9DH0064 | Silver |
| R9DH0065 | Gold |
| R9ZA1100 | Gunmetal |
| R9DH0067 | Blue |
| R9DH0066 | Red |



CURVED QUICK RELEASE SET (3 PIECE SET)

- Front / Rear / Seat Pin Set
- O.L.D. : 100mm(Front) / 135mm(Rear)
- Steel Shaft
- 158g

| CODE | COLOR |
|----------|----------|
| R9ZA0954 | Black |
| R9ZA0955 | Silver |
| R9ZA0956 | Gold |
| R9ZA0957 | Gunmetal |
| R9ZA0958 | Blue |
| R9ZA0959 | Red |



CURVED QUICK SEAT PIN

- Steel Shaft
- 44g

| CODE | COLOR |
|----------|----------|
| R9DH0069 | Black |
| R9DH0068 | Silver |
| R9DH0070 | Gold |
| SPS01303 | Gunmetal |
| R9DH0071 | Blue |
| R9DH0072 | Red |



I-LINK (for BRAKE)

- I-LINK Outer Housing (1set x 1.5m)
- Liners (1pc x 2m & 1pc x 1.3m)
- End Pieces (5pcs for frame, 2pcs for brake & 3pcs for brake lever)
- Frame Protectors (2pcs)
- Extra Color Links (10 links each of gold, red, and blue)

| CODE | COLOR |
|----------|--------|
| CBB02100 | Black |
| CBB02101 | Silver |

I-LINK (for SHIFTER)

- I-LINK Outer Housing (1set x 1.8m)
- Liners (1pc x 2m & 1pc x 1.3m)
- End Pieces (8pcs for frame, 5pcs for shifter)
- Frame Protectors (3pcs)
- Extra Color Links (10 links each of gold, red, and blue)

| CODE | COLOR |
|----------|--------|
| CBS01100 | Black |
| CBS01101 | Silver |

OUTER HOUSING

- 1m Length

| CODE | COLOR |
|----------|--------|
| CBP02800 | Black |
| CBP02801 | Silver |
| CBP02802 | Blue |
| CBP02803 | Red |
| CBP02804 | Gold |



LINER

- 2m Length

| CODE |
|----------|
| CBP02400 |



END PIECE (for FRAME)

- 2 Pieces
- Ø5.8mm

| CODE |
|----------|
| CBP02100 |



END PIECE (for BRAKE)

- 2 Pieces
- Ø5.0mm

| CODE |
|----------|
| CBP02200 |



FRAME PROTECTOR

- 4 Pieces

| CODE |
|----------|
| CBP01900 |



END PIECE (for BRAKE LEVER & SHIFTER)

- 2 Pieces

| CODE |
|----------|
| CBP02000 |



For V-BRAKE

BRH075

- Alloy Holder with Fixing Pin (Cartridge type)
- With Angle Adjusting Spacers
- 72mm

| CODE | COLOR |
|----------|--------|
| BRH07500 | Silver |



BRH100

- Repair Pads for BRH075
- 72mm

| CODE | COLOR |
|----------|--------|
| BRH10000 | Black |
| BRH10001 | Red |
| BRH10002 | Yellow |
| BRH10003 | Gray |



BRH098

- Alloy Holder with Fixing Pin (Cartridge type)
- With Angle Adjusting Spacers
- 70mm
- Black (Hard type), Red (Semi-hard type)

| CODE | COLOR |
|----------|-------|
| BRH09800 | Black |
| BRH09801 | Red |



BRH099

- Repair Pads for BRH098
- With Fixing Pins
- 70mm
- Black (Hard type), Red (Semi-hard type)

| CODE | COLOR |
|----------|-------|
| BRH09900 | Black |
| BRH09901 | Red |



BRH101

- With Angle Adjusting Spacers
- 70mm

| CODE | COLOR |
|----------|-----------|
| BRH10100 | Black |
| BRH10101 | Dark Blue |
| BRH10102 | Red |
| BRH10103 | Gray |



For CANTILEVER BRAKE

BRH123

- Alloy Holder with Fixing Pin (Cartridge type)
- 55mm

| CODE | COLOR |
|----------|-------|
| BRH12300 | Black |
| BRH12301 | C.P. |



BRH124

- Repair Pads for BRH123
- 55mm

| CODE | COLOR |
|----------|-------|
| BRH12400 | Black |



BRH122

- Forged Alloy Post
- 72mm

| CODE | COLOR |
|----------|-------|
| BRH12200 | Black |



BRH081

- Forged Alloy Post
- 72mm

| CODE | COLOR |
|----------|-------|
| BRH08100 | Black |



BRH003

- Forged Alloy Post
- 55mm

| CODE | COLOR |
|----------|-------|
| BRH00300 | Black |



For ROAD

BRH107

- Alloy Holder (Cartridge type)
- With Angle Adjusting Spacers
- Fits to Shimano Dura-Ace, Ultegra or 105
- 55mm

| CODE | COLOR |
|----------|-----------|
| BRH10700 | Mat Black |
| BRH10701 | Silver |



BRH088

- Repair Pads for BRH107
- 55mm

| CODE | COLOR |
|----------|-------|
| BRH08800 | Black |



BRH108

- Alloy Holder (Cartridge type)
- 55mm
- Fits to Campagnolo Record, Chorus and Centaur

| CODE | COLOR |
|----------|-----------|
| BRH10800 | Mat Black |
| BRH10801 | Silver |



BRH089

- Repair Pads for BRH108
- 55mm

| CODE | COLOR |
|----------|-------|
| BRH08900 | Black |



For ROAD CARBON RIM

BRH118

- Alloy Holder with Fixing Pin (Cartridge type)
- 55mm
- Fits to Shimano Dura-Ace, Ultegra and 105

| CODE | COLOR |
|----------|-------|
| BRH11800 | Blue |



BRH120

- Alloy Holder (Cartridge type)
- 55mm
- Fits to Campagnolo Record, Chorus and Centaur

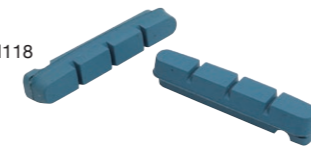
| CODE | COLOR |
|----------|-------|
| BRH12000 | Blue |



BRH119

- Repair Pads for BRH107, BRH118
- 55mm

| CODE | COLOR |
|----------|-------|
| BRH11900 | Blue |



BRH121

- Repair Pads for BRH108, BRH120
- 55mm

| CODE | COLOR |
|----------|-------|
| BRH12100 | Blue |



For TRIAL

BRH067

- for V-Brake
- 60mm

| CODE | COLOR |
|----------|-------|
| BRH06700 | Amber |



BRH069

- for Magura Hydro Rim Brake
- 50mm

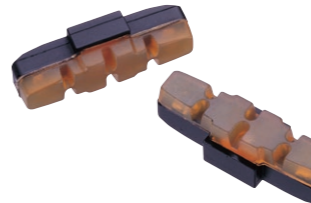
| CODE | COLOR |
|----------|--------|
| BRH06900 | Yellow |



BRH068

- for Magura Hydro Rim Brake
- 50mm

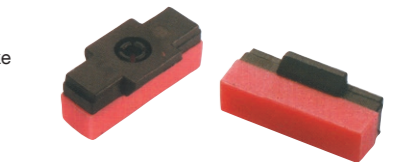
| CODE | COLOR |
|----------|-------|
| BRH06800 | Amber |



BRH094

- for Magura Hydro Rim Brake
- 37mm

| CODE | COLOR |
|----------|-------|
| BRH09400 | Red |



For U-BRAKE

BRH082

- for U-Brake
- 68mm

| CODE | COLOR |
|----------|-------|
| BRH08200 | Black |



For BMX

BRH083

- for BMX Brake
- 69mm

| CODE | COLOR |
|----------|-------|
| BRH08300 | Black |

