



uvex

Cycling

2016

protecting people

Readers' Pick Top Marks

1st Place Mountainbike
2nd Place Tour
3rd Place Rennrad, Bike



RennRad
3rd Place

04 protecting people
since 1926

06 One brand. One mission.
One vision.
uvex sports and uvex safety
at the Red Bull District Ride

10 Epic equipment
Cape Epic, South Africa

12 Behind the scenes
Made in Germany

16 Technology helmets
protection // fit // comfort

26 Helmets
26 race // 38 city // 44 active
52 all-mountain // 58 enduro
66 core // 72 women
78 junior // kids

86 Accessories

90 Product overview

protecting people since 1926

protecting people is the core
mission of the uvex brand.
Our aim and our motivation.



uvex is the world's leading producer of protective products and has global manufacturing expertise.

Cutting-edge technologies and solutions. Customer-oriented services and specific training programmes for personal protective equipment. These are the reasons everyone who places their trust in us benefits from the best possible protection for sports, leisure and at work.

"Made in uvex" is our promise of quality. So, we set demanding standards for our products and our production facilities and our network of partners.

At uvex people are our primary focus: whether a customer, employee or partner. We work to balance economy, ecology and social commitment and conscientiously follow the philosophy of "business is people".



uvex sports teams
up with uvex safety

Red Bull District Ride
in Nuremberg, Germany

Tsunami backflip by
uvex rider Szymon Godziek

one brand. one mission. one vision.

September 2014: knights of the modern era gather once again to kick up a storm at the Red Bull District Ride in Nuremberg old town, in front of 120,000 spectators. Team uvex was in the middle of the action – double strength.

The Red Bull District Ride is one of the world's most spectacular slopestyle bike competitions, and one of 5 events in the 2014 FMB World Tour Diamond Series for freestyle MTB.

Riders start with an 8-meter drop off the castle wall, full speed over steps, obstacles

and dirt hills towards the city centre to the climax of the competition:

Shooting out of a window in Nuremberg Town Hall, riders grab their first chance for big air. Flying up to 10 metres off the ground, they land up to 15 metres later in the main square.

When tricks and jumps go close to the rider's limit, it is vital that only professionals should have their hands in the game.

For this reason the organisers relied on uvex

safety to kit out the craftsmen who were tasked with building the circuit, from head to toe in uvex safety products.

uvex sports was on the start line at the Red Bull District Ride. uvex core athletes – riders Simon Kirchmann, Lukas Knopf, Magnus Baumann und Szymon Godziek – were there too. Szymon showed the crowd in Nuremberg why he is one of the best slopestyle riders in the world.



Discover more at:
uvex-sports.com/district-ride

**World premiere in Nuremberg:
uvex team rider Szymon
Godziek achieves the
world's first officially
landed Tsunami Backflip
thrown in a competition.**

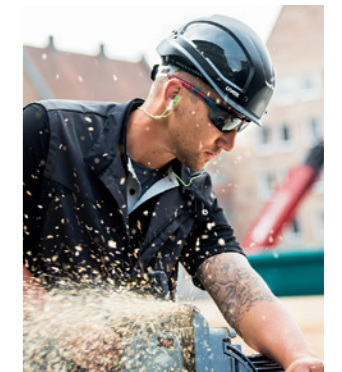


Photographer: Michael Knipfer | tm studios visuelle medien GmbH

Before the District Ride, Szymon had collaborated with uvex to design his own signature range of helmets and eyewear, available as a limited edition. At uvex headquarters in Fürth, Germany he met with product developers and followed the equipment manufacturing process. Clearly this young Polish rider feels extremely safe using uvex equipment.

In the main square Szymon Godziek landed the first Tsunami Backflip in an official competition.

Tens of thousands celebrated with the uvex team rider, who secured the award for Best Trick with this jump.



Watch Szymon Godziek's Tsunami Backflip:
uvex-sports.com/protectthedistrict





epic equip- ment

Eight stages, 748 kilometers. Strength sapping climbs, swift descents and gruelling trails. No one on the start line of Cape Epic should make any compromises – in their preparation or their choice of equipment.

Cape Epic is a legendary race, like a Tour de France for mountain bikers.

Every March, some of the world's best marathon mountain bike riders and hundreds of amateur athletes gather in South Africa to ride for 8 consecutive days, covering a distance of 748 km and 16,000 metres of climbing.

In 2015, 1,200 riders began their bike adventure with a prologue in Kapstadt, then another 7 stages before they raced across the finish line in the Meerendal Wine Estate in Durbanville.

German professional athlete Karl Platt has won Cape Epic four times.

Yet again he raced, relying on uvex's high-tech protection. In addition to a perfectly

fitting, well-ventilated helmet riders like Karl Platt need, above all:

A clear view in all conditions. Guaranteed in eyewear with variomatic® technology.

The automatic, self-tinting lens reacts instantly to the prevailing light conditions, whether low lying sun or unexpected rain shower. Its specially shaped lens provides a perfect field of view. Flexible nose pads and rubberised tips on the legs ensure a perfect fit, no matter how rough the track gets – a regular feature of Cape Epic.

The route travels through remote areas, along dusty tracks and over muddy terrain – in a region well known for unpredictable weather changes.

For this reason, each team has two riders: so they can help each other out at any time.

The Bulls Team of Karl Platt and Urs Huber achieved third place overall with a total time of 31 hours, 35 minutes and 23 seconds.

"It was a hard fight," said a delighted Karl Platt after the race.

"Yet again we have had ups and downs. But now we are proud to be here on the podium at Cape Epic."



For two decades uvex's manufacturing plant at Oberzell, near Passau, Germany has been a powerhouse of innovation.

In the 2015/2016 financial year, around one million helmets will be produced here. Made in Germany is practiced daily.

Complex technologies, new materials and sophisticated production processes – making a cycling helmet is a highly complex process.

Yet behind it lies a simple theory: basically every helmet consists of two perfectly matched parts.

uvex products,
Made in Germany

Production facility,
Oberzell on the Danube

A glimpse into
helmet production

MADE IN
GERMANY

behind the scenes



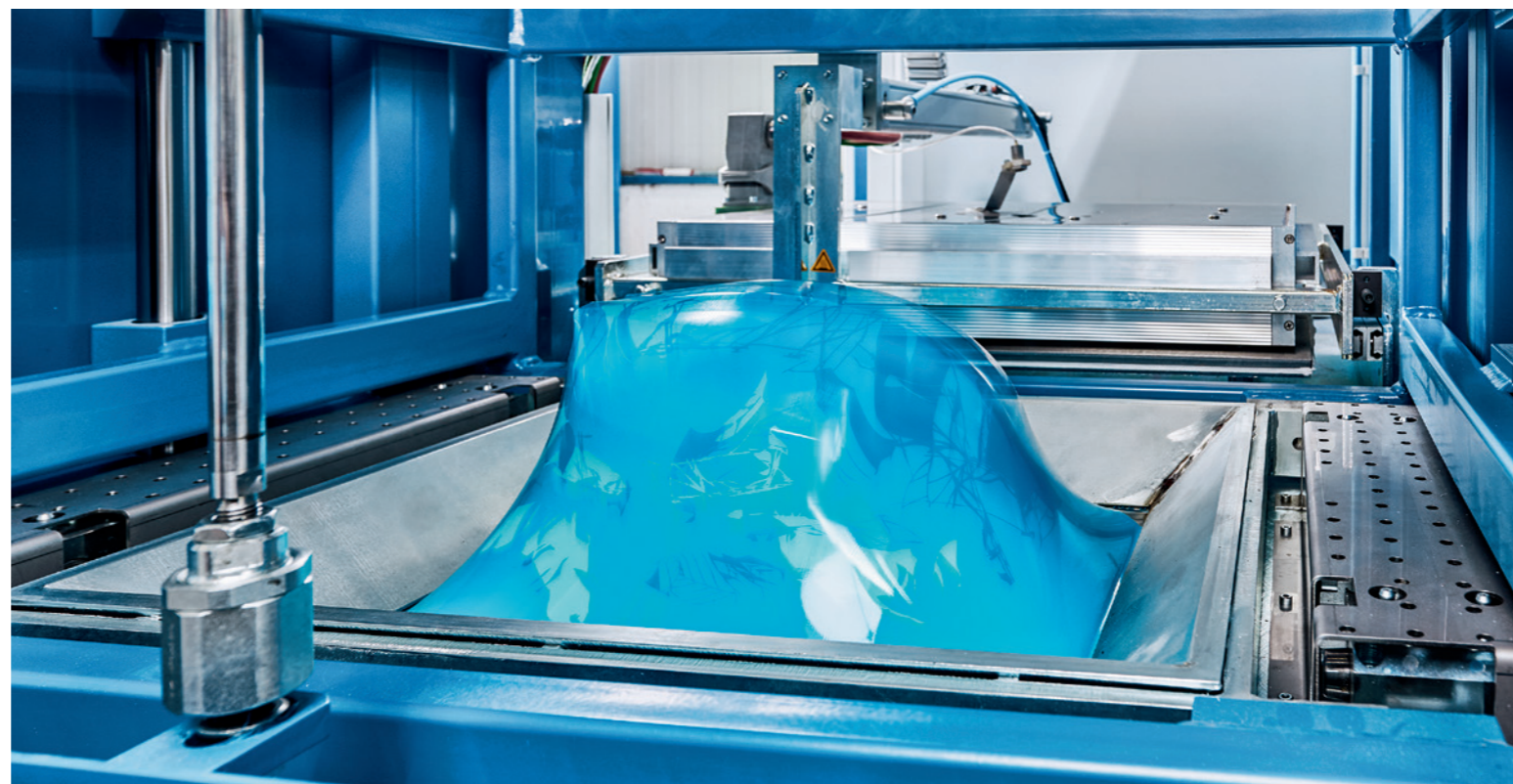
"The outer shell maintains the shape of the helmet. The foam-like EPS inside absorbs the energy in the event of an impact," explains Thomas Hirsch, product manager for helmets at the Oberzell factory.

Thermo-moulding and milling machines are used to create outer shells.

Foam machines create the steam reaction which inflates expanded polystyrene (EPS) until it reaches the exact density required for a helmet interior.

And is built from up to 42 individual parts.

There are also additional departments including order preparation, production control and quality control.



"Every morning we make and test a sample foam helmet. We weigh it, cut it open and test the structure of the foam," says Thomas Hirsch.

"We also take every 500th helmet from the production line and test it to destruction. After all, there may be anomalies which are not visible."

Such comprehensive testing ensures that, as well as exceptional comfort, every helmet which leaves the factory in Oberzell guarantees the wearer: safety – Made in Germany.





Technology helmets

protection // fit // comfort
The philosophy of our technology is based on three key factors: protection for the head, perfect fit and highest possible comfort.

[tested to standards | safety tested]

We test the future. Safety guaranteed.

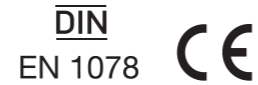
Wearing an uvex helmet for cycling ensures your safety. Every cycling helmet undergoes rigorous tests in our testing centre.

We guarantee the quality and function of our helmets – plus they

meet the most stringent international safety standards for personal protective equipment.

Our advanced test procedures also help us develop tomorrow's uvex helmets.

European bicycle helmet standards



USA bicycle helmet standard*



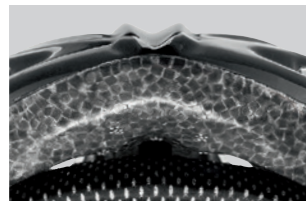
Germany TÜV certified



[shell materials]

High-tech in all layers

Outer material



PC
inmould // double inmould
Strongly bonded polycarbonate shell for safety. Double inmould for extra protection around the lower edge.

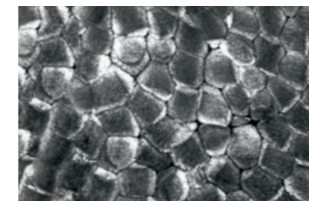


CFK
hardshell
Carbon fibre strengthened polymer for ultralight high-end helmets.



ABS
hardshell
This proven technology protects the head with a hard shell – and is highly effective.

Inner material



EPS
hardshell // inmould
Protective material contains microscopic air chambers. They effectively absorb the impact forces created in a fall.

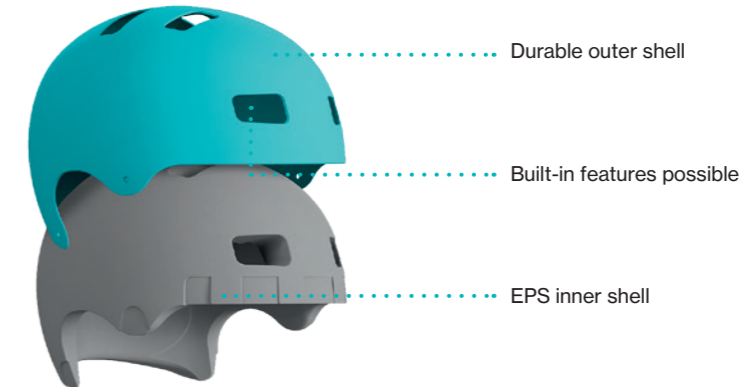
[shell construction]

The best of the best

[hardshell technology]

An injection moulded outer shell and EPS inner shell creates a highly effective safety combination: impact resistant outside, shock absorbing inside.

This complex construction enables installation of perfectly placed air vents and channels. For maximum safety and superb wearing comfort.



Inseparably bonded shell with EPS inner layer and polycarbonate external layer



[inmould technology]
Protective EPS material is foamed directly into the polycarbonate shell.
For a lightweight helmet with highest impact resistance. The perfect fusion of EPS inner layer and PC outer layer.

[double inmould technology]

Tried and tested inmould construction plus a second PC shell.

It protects the outer edge from damage and looks good too.



[shell sizes]

Fits all heads



Whether large, or small, round or square, the uvex range has the right shell size for every head.

head circumference { perfect fit } head shape

[fit systems]

uvex IAS systems and Boa® offer individual adjustment

uvex uses the most advanced fit systems to ensure the perfect individual fit for every head shape.



Different head shapes yet the same head circumference
→ Individual adjustment via uvex fit systems

[Boa®]

All new. All improved. All Boa®.

The unique Boa® system, specially optimized for cycling helmets, is available in uvex helmets.

Combining an ingeniously simple system with high performance materials from the aerospace industry improves comfort, performance and safety.



High-tech partnership with Boa® Technology



Flexible polyamide (PA) bands on three sides of the helmet ensure optimal fit on the head.



Fine tuning with micro adjustment



Secure fit via ratchet dial



Easy

The Boa® wheel can be adjusted with one hand.

Comfortable

1 click = 1 mm.
For the perfect fit on every head.

Safe

The selected setting stays. For fantastic fit.

[uvex IAS | uvex IAS 3D]

Precise adjustment

Every head is different. That's why helmets featuring the uvex IAS system provide width adjustment.

Heads don't only differ in circumference – they also differ in height.

The uvex IAS 3D fit system does more – it also offers precise adjustment to the individual head height. Instantly and with millimetric precision.

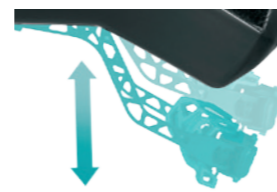


[uvex IAS | uvex IAS 3D]



Width adjustment
Adjusts to the individual head circumference

[uvex IAS 3D]



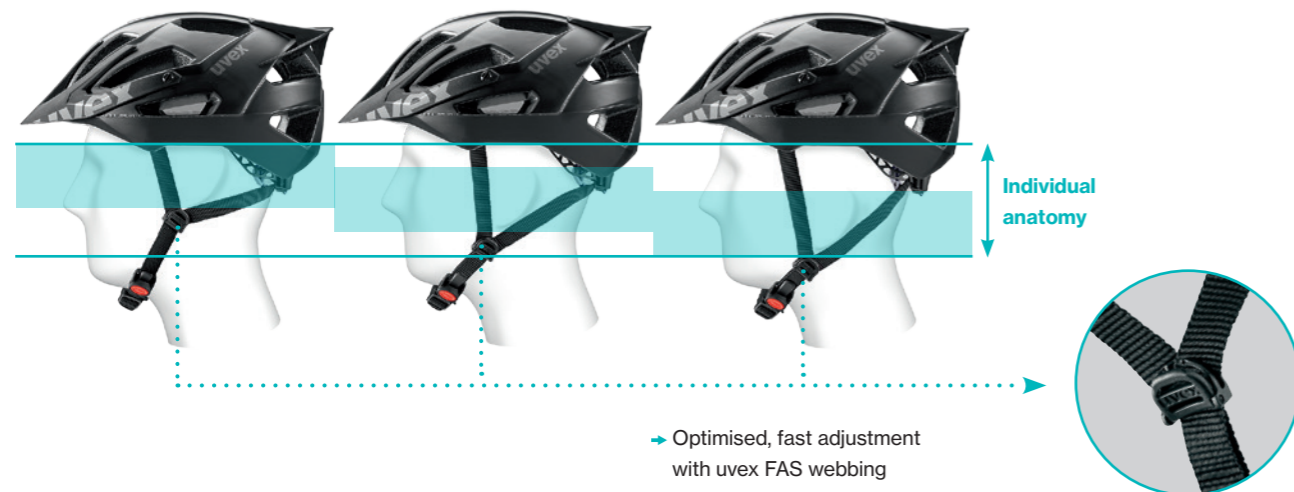
Height adjustment
Adjusts to the individual head height

[FAS]

Simply practical

Fast Adapting System webbing can be easily and continuously tailored to your exact head shape.

The helmet stays securely on the head in all situations and the webbing straps are always in the best position.



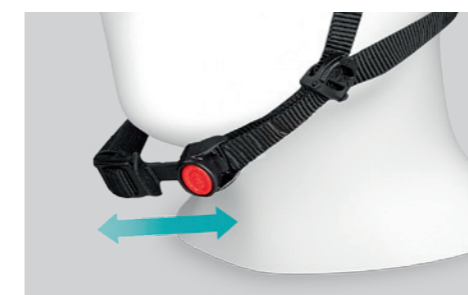
[fit systems]

At a glance

| | uvex IAS | uvex 3D IAS | uvex IAS 2.0 | uvex 3D IAS 2.0 | uvex anatomic IAS | uvex 2k IAS | Boa® |
|--|--|---------------|--|---|---|--|--|
| helmets | uvex race 2 pro uvex city 5 uvex city e uvex hlmt 5 bike pro uvex hlmt 5 bike uvex hero uvex kid 3 uvex kid 2 | uvex oversize | uvex i-vo uvex air wing uvex quatro junior | uvex boss race uvex city i-vo uvex adige cc uvex adige uvex i-vo cc uvex i-vo c uvex onyx uvex kid 1 | uvex city v uvex ultra snc uvex quatro pro uvex stivo cc uvex finale uvex stiva cc | uvex race 6 uvex race 4 uvex race 5 uvex race 1 uvex ultrasonic race | uvex EDAAero uvex jakkyl hde uvex jakkyl |
| Width adjustment | X | X | X | X | X | X | X |
| Height adjustment | | X | | X | X | X | X |
| Comfort | + | ++ | ++ | +++ | ++++ | ++++ | +++++ |
| Ventilation | + | + | +++ | +++ | ++++ | ++++ | +++++ |
| Weight | + | + | ++ | ++ | +++ | ++++ | +++++ |
| optimal adjustment to head circumference | X | X | X | X | X | X | X |
| optimal adjustment to head shape | | X | | X | X | X | X |
| reflective sticker on IAS adjustment wheel | X | X | X | X | | | |
| light, well-ventilated IAS headband | | | X | X | X | X | |
| large, anatomically-shaped IAS wing with soft components | | | | | X | | X |
| easy-grip IAS adjustment wheel with soft components | | | | | X | X | |
| extremely light IAS system | | | | | | X | |
| Boa® wire: exceptionally light, well ventilated | | | | | | | X |
| perfect pressure distribution | | | | | | | X |

[monomatic]

Button press adjustment



uvex monomatic comfort lock can be opened and closed with one hand.

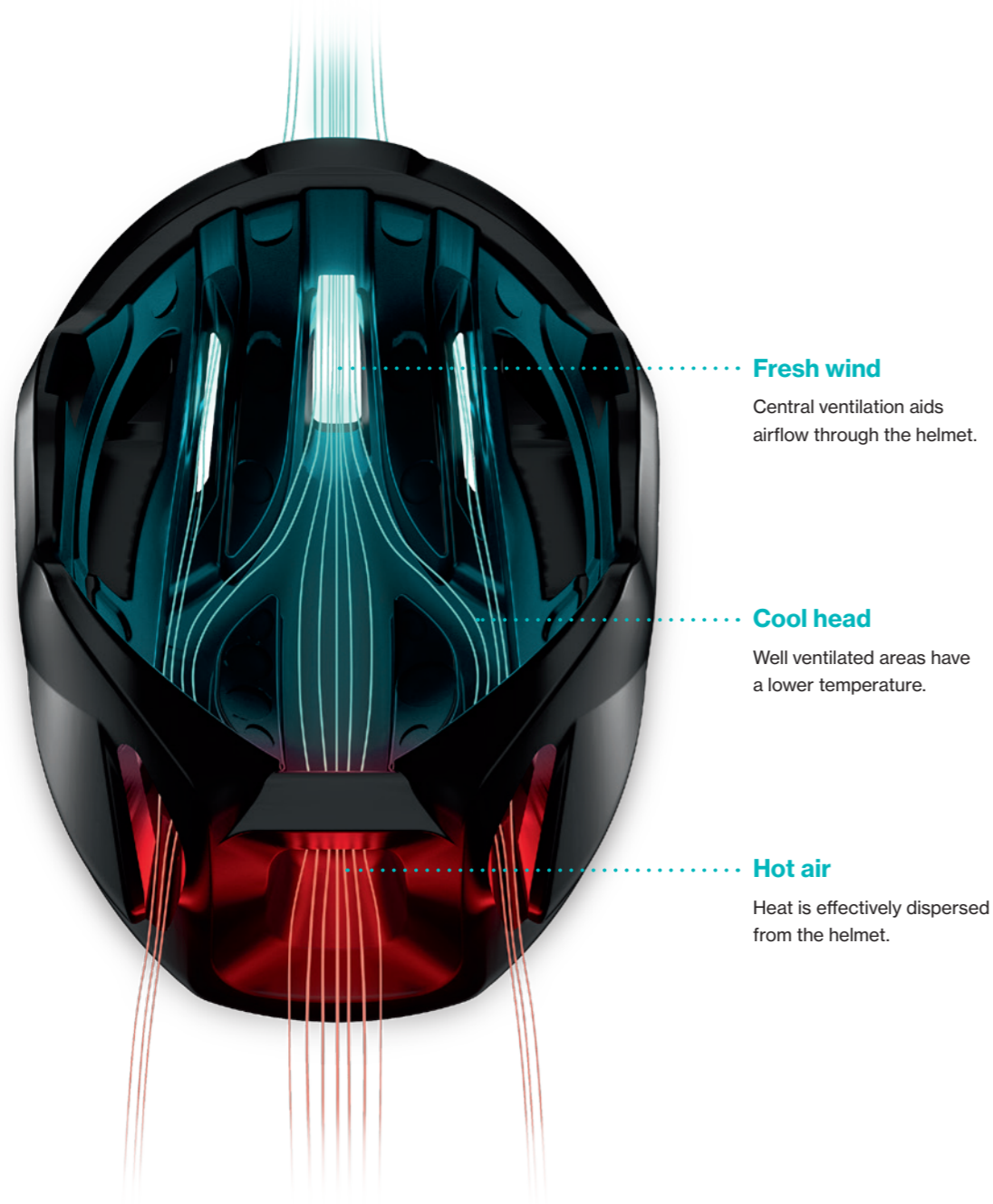
The chin strap adjusts at the touch of a button: wearing over a hat in cooler weather or if extra ventilation and comfort are needed on a hot climb.

[vent system]

Optimised ventilation

uvex values optimal ventilation performance in all its helmets.

Prevent uncomfortable heat build-up: cleverly designed ventilation channels expel warm air and draw in fresh air.



Fresh wind

Central ventilation aids airflow through the helmet.

Cool head

Well ventilated areas have a lower temperature.

Hot air

Heat is effectively dispersed from the helmet.

[removable lining]

Interchangeable liner

Interior features significantly affect a helmet's comfort. All our pads absorb moisture.

Hook and loop fasteners allow easy removal for washing.

[basic pads]

Removable and washable padding.



[x-fit pads]

High quality, structured material improves ventilation. Removable and washable.



[vent pads]

High quality moisture wicking material with embossed ventilation channels. Comfortable and soft on the skin, dries quickly, removable and washable.



[vent carbon pads]

Moisture wicking material with carbon fibres. Ventilation channels and perforated pads ensure optimal helmet climate. Comfortable to wear, quick drying and washable.





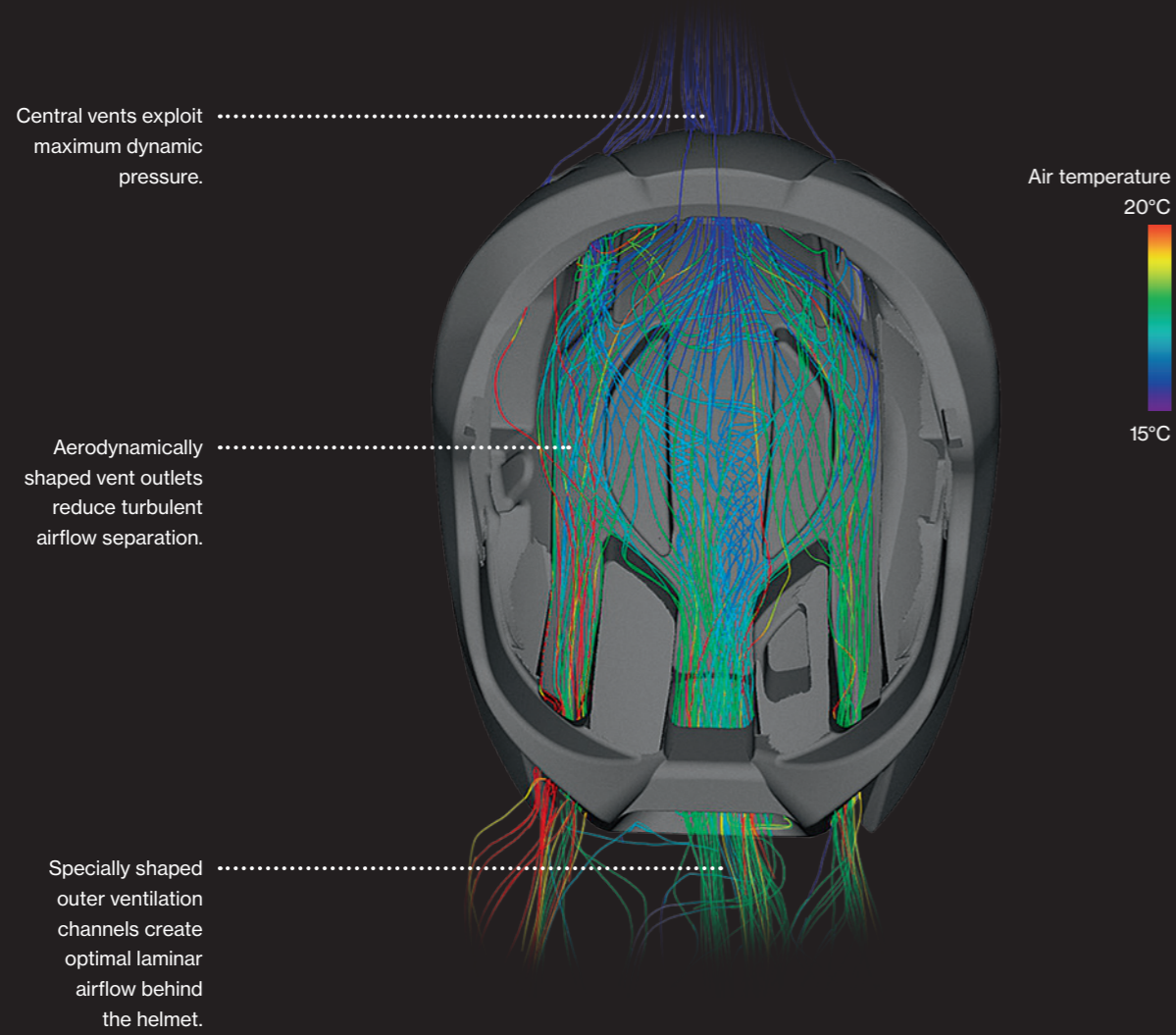
race

helmets

Aerodynamic, ultralight and exceptional ventilation: with an uncompromising combination of comfort and performance, uvex leads the race.

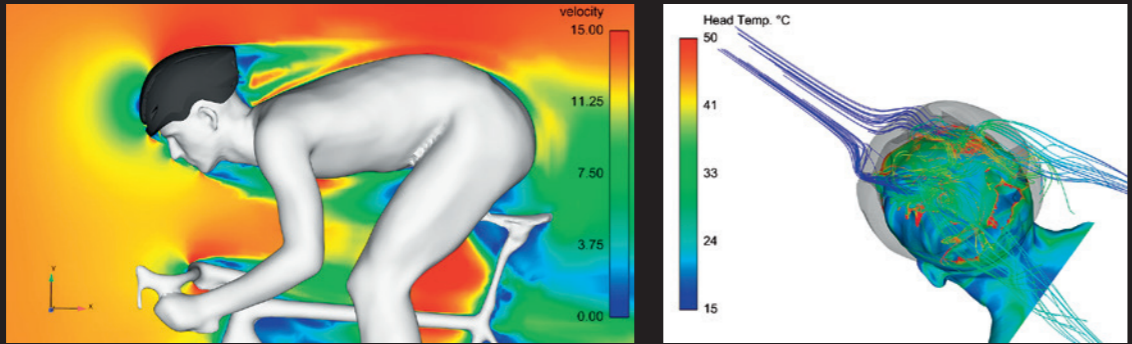
Filip
Ospalý

Photographer:
Gonzalo Arroyo Moreno



Flow detachment zones are clearly visible in the airflow profile.

The thermal image shows the temperature of the head.



16 watts power saving compared to traditional aero sprint helmets: over a distance of 40 km at an average speed of 38 km/h. This corresponds to a time difference of 1 min. 25 s*.

uvex EDAero

uvex EDAero – the fastest helmet in its class – with optimal ventilation.

We don't want to create ripples with this helmet. uvex EDAero does a lot: it cleverly directs airflow where it should go and keeps a cool head even in the hottest situations.

uvex set itself a very special challenge: develop a helmet that combines the highest comfort with the demands of a professional road cyclist.

The most important innovation in this helmet is its exceptional flow-optimised aerodynamic performance and – despite having air vents – providing lower air resistance plus best cooling performance.

Wind tunnel testing by Formula1 experts from Bionic Surface Technologies (BST) found that the uvex EDAero was up to 0.6 km/h faster for the same power output.

KEEP COOL

YOU'RE THE FASTEST

uvex EDAero [uvex EveryDayAerodynamics]
 The fastest uvex helmet in its class – plus optimal ventilation.



uvex EDAero [uvex EveryDayAerodynamics]

PROTECTION

- double inmould technology
- aero vent design
- standards: EN 1078 / TÜV GS / CE

ENGINEERED IN GERMANY

black-white mat

0317 // 53-57 cm

0319 // 57-59 cm

RECOMMENDATION



uvex sportstyle 810 v

FIT

- 2 shell sizes
- Boa® half ring
- monomatic
- FAS strap

COMFORT

- weight from 300 g
- 8 ventilation channels
- vent pads



white-black mat

0417 // 53-57 cm

0419 // 57-59 cm



red mat-white

0517 // 53-57 cm

0519 // 57-59 cm

uvex race 6

PROTECTION

- carbon shell technology
- standards: EN 1078 / TÜV GS / CE / CPSC

MADE IN GERMANY



FIT

- 2k IAS, half ring
- monomatic
- FAS strap

COMFORT

- 9 ventilation channels
- vent pads
- magnet visor litemirror smoke
- includes helmet bag
- weight from 395 g

black carbon mat
0115 // 52-57 cm

uvex race 4

PROTECTION

- carbon shell technology
- standards: EN 1078 / TÜV GS / CE

MADE IN GERMANY

FIT

- 2k IAS, half ring
- monomatic
- FAS strap

COMFORT

- vent pads
- magnet visor litemirror smoke
- includes helmet bag
- weight from 380 g

carbon black
0115 // 52-57 cm



Anna Meares

uvex race 2 pro

PROTECTION

- inmould technology
- standards: EN 1078 / TÜV GS / CE

ENGINEERED IN GERMANY

FIT

- IAS
- monomatic
- FAS strap

COMFORT

- 4 ventilation channels
- basic pads
- weight from 320 g

white-black mat
2017 // 54-59 cm



uvex race 5

PROTECTION

- double inmould technology
- high impact shell
- standards: EN 1078 / TÜV GS / CE

FIT

- 3 shell sizes
- 2k IAS, half ring
- monomatic
- FAS strap

COMFORT

- 23 ventilation channels
- vent carbon pads
- sun protection
- weight from 225 g

AWARDS



04/2014 very good

MADE IN GERMANY



black mat-red
1215 // 52-56 cm
1217 // 55-58 cm
1219 // 58-61 cm

VIEWS



RECOMMENDATION



uvex sportstyle 802 v



white-black
1315 // 52-56 cm
1317 // 55-58 cm
1319 // 58-61 cm



white
0115 // 52-56 cm
0117 // 55-58 cm
0119 // 58-61 cm



black mat/shiny
0915 // 52-56 cm
0917 // 55-58 cm
0919 // 58-61 cm

uvex race 1

PROTECTION

- double inmould technology
- roll over bar
- standards: EN 1078 / TÜV GS / CE

FIT

- 2 shell sizes
- 2k IAS, half ring
- monomatic
- FAS strap

COMFORT

- 20 ventilation channels
- vent pads
- weight from 205 g

AWARDS



05/2015 very good

MADE IN GERMANY



green-white
1915 // 51-55 cm
1917 // 55-59 cm

VIEWS



RECOMMENDATION



uvex sportstyle 810



red-white
2015 // 51-55 cm
2017 // 55-59 cm



black mat/shiny
1715 // 51-55 cm
1717 // 55-59 cm



white
1115 // 51-55 cm
1117 // 55-59 cm

uvex ultrasonic race

PROTECTION

- double inmould technology
- standards: EN 1078 / TÜV GS / CE

MADE IN GERMANY

FIT

- 3 shell sizes
- 2k IAS, half ring
- monomatic
- FAS strap

COMFORT

- 19 ventilation channels
- vent pads
- bug net
- weight from 210 g

AWARDS

RennRad 513
KAUFTIPP

TOUR

07/2012 the one to buy

black mat-blue

1315 // 52-56 cm

1317 // 55-58 cm

1319 // 58-61 cm

RECOMMENDATION



uvex sportstyle 810



white-black

0815 // 52-56 cm

0817 // 55-58 cm

0819 // 58-61 cm

uvex boss race

PROTECTION

- double inmould technology
- standards: EN 1078 / TÜV GS / CE

MADE IN GERMANY

FIT

- 2 shell sizes
- 3D IAS 2.0
- monomatic
- FAS strap

COMFORT

- 19 ventilation channels
- x-fit pads
- bug net
- weight from 215 g

AWARDS

RoadBIKE

04/2014 very good

Mountain BIKE

05/2012 very good

white-black

0815 // 52-56 cm

0817 // 55-60 cm

optional with xb300 visor

VIEWS



RECOMMENDATION



uvex sportstyle 202 race vm



anthracite-yellow

0915 // 52-56 cm

0917 // 55-60 cm

optional with xb300 visor



blue-black

1015 // 52-56 cm

1017 // 55-60 cm

optional with xb300 visor



black

0315 // 52-56 cm

0317 // 55-60 cm

optional with xb300 visor



white

0215 // 52-56 cm

0217 // 55-60 cm

city helmets

Comfort meets fit: anyone who doesn't want to think twice about safety chooses uvex. Helmet technology perfected for city riding.

uvex city v

PROTECTION

- hardshell technology
- standards: EN 1078 / TÜV GS / CE

ENGINEERED IN GERMANY

FIT

- 2 shell sizes
- anatomic IAS
- monomatic
- FAS strap

COMFORT

- 10 ventilation channels
- x-fit pads in two densities (5 mm and 10 mm)
- bug net
- includes visor litemirror silver
- optional visor clear
- reflective straps and logos
- weight from 490 g



red-white mat
0417 // 55-58 cm
0419 // 58-61 cm

VIEWS



asphalt mat
0317 // 55-58 cm
0319 // 58-61 cm

black mat
0217 // 55-58 cm
0219 // 58-61 cm

uvex city 5

PROTECTION

- hardshell technology
- standards: EN 1078 / TÜV GS / CE

ENGINEERED IN GERMANY

FIT

- 2 shell sizes
- removable IAS
- monomatic
- FAS strap

COMFORT

- 10 ventilation channels
- x-fit pads in two densities (5 mm and 10 mm)
- removable visor kx003
- reflective straps and logos
- weight from 395 g

white metallic mat
0717 // 55-58 cm
0719 // 58-61 cm

VIEWS



RECOMMENDATION



uvex sportstyle 204



blue metallic mat
0817 // 55-58 cm
0819 // 58-61 cm

dark silver metallic mat
0417 // 55-58 cm
0419 // 58-61 cm

uvex city i-vo

PROTECTION

- inmould technology
- standards: EN 1078 / TÜV GS / CE

MADE IN GERMANY

FIT

- 2 shell sizes
- 3D IAS 2.0
- monomatic
- FAS strap

COMFORT

- 24 ventilation channels
- x-fit pads
- bug net
- reflective straps and logos
- removable visor xb390
- incl. plug-in LED xb039
- weight from 240 g

AWARDS



light grey mat
0815 // 52-57 cm
0817 // 56-60 cm

VIEWS



RECOMMENDATION



uvex sportstyle 114



white mat
0115 // 52-57 cm
0117 // 56-60 cm



dark silver mat
0215 // 52-57 cm
0217 // 56-60 cm



blue mat
0415 // 52-57 cm
0417 // 56-60 cm

uvex city e

PROTECTION

- inmould technology
- standards: EN 1078 / TÜV GS / CE

ENGINEERED IN GERMANY

FIT

- 2 shell sizes
- IAS
- monomatic
- FAS strap

COMFORT

- 18 ventilation channels
- basic pads
- bug net
- reflective straps and logos
- removable visor
- triangle LED (optional)
- weight from 235 g

black mat
0115 // 52-57 cm
0117 // 56-61 cm

RECOMMENDATION



uvex sportstyle 218



neon yellow mat
0215 // 52-57 cm
0217 // 56-61 cm



neon green mat
0315 // 52-57 cm
0317 // 56-61 cm



neon orange mat
0415 // 52-57 cm
0417 // 56-61 cm



active

helmets

Active cyclists enjoy trekking and touring; uvex active range offers far-reaching performance – including excellent ventilation and a sun visor.

uvex adige cc

PROTECTION

- double inmould technology
- standards: EN 1078 / TÜV GS / CE

MADE IN GERMANY

FIT

- 2 shell sizes
- 3D IAS 2.0
- monomatic
- FAS strap

COMFORT

- 18 ventilation channels
- x-fit pads
- bug net
- removable visor xb470-V2

- plug-in LED xb047 (optional)
- weight from 270 g



red mat

0315 // 52-57 cm

0317 // 56-61 cm

RECOMMENDATION



uvex sportstyle 202 v



black mat

0215 // 52-57 cm

0217 // 56-61 cm



white mat

0115 // 52-57 cm

0117 // 56-61 cm



blue mat

0415 // 52-57 cm

0417 // 56-61 cm

uvex adige

PROTECTION

- double inmould technology
- standards: EN 1078 / TÜV GS / CE

MADE IN GERMANY

FIT

- 2 shell sizes
- 3D IAS 2.0
- monomatic
- FAS strap

COMFORT

- 18 ventilation channels
- x-fit pads
- bug net

- removable visor xb470-V2
- plug-in LED (optional)
- weight from 270 g



white-silver

0115 // 52-57 cm

0117 // 56-61 cm

RECOMMENDATION



uvex sportstyle 802 v



black-dark silver

0215 // 52-57 cm

0217 // 56-61 cm



marine-blue

0315 // 52-57 cm

0317 // 56-61 cm



green-lemon

0415 // 52-57 cm

0417 // 56-61 cm

uvex ultra snc

PROTECTION

- double inmould technology
- standards: EN 1078 / TÜV GS / CE

MADE IN GERMANY

FIT

- 3 shell sizes
- anatomic IAS
- monomatic
- FAS strap

COMFORT

- 19 ventilation channels
- vent pads
- bug net
- removable visor xb380
- weight from 235 g

AWARDS



06/2014 very good



01/2015



green-orange mat

- 0715 // 52-56 cm
- 0717 // 55-58 cm
- 0719 // 58-61 cm

RECOMMENDATION



uvex sportstyle 802 small v



black-petrol mat
0615 // 52-56 cm
0617 // 55-58 cm
0619 // 58-61 cm



white-silver mat
0515 // 52-56 cm
0517 // 55-58 cm
0519 // 58-61 cm



orange-red mat
0815 // 52-56 cm
0817 // 55-58 cm
0819 // 58-61 cm

uvex i-vo cc

PROTECTION

- inmould technology
- standards: EN 1078 / TÜV GS / CE

MADE IN GERMANY

FIT

- 2 shell sizes
- 3D IAS 2.0
- monomatic
- FAS strap

COMFORT

- 24 ventilation channels
- x-fit pads
- bug net
- plug-in LED xb039 (optional)
- triangle LED (optional)
- removable visor xb390-V2
- weight from 240 g

AWARDS



06/2014 very good



RECOMMENDATION



uvex sportstyle 113

red mat

- 1215 // 52-57 cm
- 1217 // 56-60 cm



black-smoke mat

- 1115 // 52-57 cm
- 1117 // 56-60 cm



black mat
0815 // 52-57 cm
0817 // 56-60 cm



green-lemon mat
0915 // 52-57 cm
0917 // 56-60 cm



blue mat
1015 // 52-57 cm
1017 // 56-60 cm



white mat
0715 // 52-57 cm
0717 // 56-60 cm



uvex i-vo c

PROTECTION

- inmould technology
- standards: EN 1078 / TÜV GS / CE

MADE IN GERMANY

FIT

- 2 shell sizes
- 3D IAS 2.0
- monomatic
- FAS strap

COMFORT

- 24 ventilation channels
- basic pads
- bug net

- plug-in LED xb039 (optional)
- triangle LED (optional)
- removable visor xb390
- weight from 225 g

white-silver

0815 // 52-57 cm

0817 // 56-60 cm

RECOMMENDATION



uvex sportstyle 103



blue-black

0215 // 52-57 cm

0217 // 56-60 cm



dark-silver orange

0315 // 52-57 cm

0317 // 56-60 cm



black-green

1215 // 52-57 cm

1217 // 56-60 cm



black-dark silver

0915 // 52-57 cm

0917 // 56-60 cm

uvex i-vo

PROTECTION

- inmould technology
- standards: EN 1078 / TÜV GS / CE

MADE IN GERMANY

AWARDS



FIT

- 2 shell sizes
- IAS
- monomatic
- FAS strap

COMFORT

- 24 ventilation channels
- basic pads
- bug net

- plug-in LED xb039 (optional)
- triangle LED (optional)
- removable visor xb390
- weight from 225 g

powder blue

0615 // 52-57 cm

0617 // 56-60 cm



white

0115 // 52-57 cm

0117 // 56-60 cm



black

0215 // 52-57 cm

0217 // 56-60 cm



uvex oversize

PROTECTION

- double inmould technology
- standards: EN 1078 / TÜV GS / CE

MADE IN GERMANY

FIT

- 3D IAS
- monomatic
- FAS strap

COMFORT

- 24 ventilation channels
- x-fit pads
- bug net
- visor xb320
- weight from 345 g

black mat-silver

0617 // 61-65 cm



all- mountain helmets

Anyone aiming high creates a path to their goal: uvex MTB helmets don't just offer comprehensive safety but also protect from sun or rain.

Max
Schumann
Photographer: Colin Stewart

uvex quatro pro

PROTECTION

- double inmould technology
- standards: EN 1078 / TÜV GS / CE

MADE IN GERMANY

FIT

- 2 shell sizes
- anatomic IAS
- monomatic
- FAS strap

COMFORT

- 17 ventilation channels
- vent pads
- bug net
- spoiler
- adjustable visor
- inclusive camera adapter
- weight from 305 g

AWARDS



06/2014 very good

blue-orange mat

0915 // 52-57 cm

0917 // 56-61 cm

VIEWS



RECOMMENDATION



uvex sportstyle 810 vm



green-lemon mat
0315 // 52-57 cm
0317 // 56-61 cm



black-white mat
0715 // 52-57 cm
0717 // 56-61 cm



black mat
0415 // 52-57 cm
0417 // 56-61 cm

uvex quatro

PROTECTION

- double inmould technology
- standards: EN 1078 / TÜV GS / CE

MADE IN GERMANY

FIT

- 2 shell sizes
- anatomic IAS
- monomatic
- FAS strap

COMFORT

- 17 ventilation channels
- vent pads
- bug net
- adjustable visor
- camera adapter (optional)
- weight from 300 g

green mat/shiny

0915 // 52-57 cm

0917 // 56-61 cm

RECOMMENDATION



uvex sportstyle 702



darksilver mat-black
0215 // 52-57 cm
0217 // 56-61 cm



blue mat/shiny
0615 // 52-57 cm
0617 // 56-61 cm



white mat-black
0815 // 52-57 cm
0817 // 56-61 cm



orange mat/shiny
0715 // 52-57 cm
0717 // 56-61 cm

uvex stivo cc

PROTECTION

- double inmould technology
- standards: EN 1078 / TÜV GS / CE

MADE IN GERMANY



FIT

- 2 shell sizes
- anatomic IAS
- monomatic
- FAS strap

COMFORT

- 18 ventilation channels
- vent pads
- bug net
- removable visor xb470
- plugin LED xb047 (optional)
- weight from 280 g

AWARDS



05/2015 winner

black-white mat

0315 // 52-57 cm

0317 // 56-61 cm

RECOMMENDATION



uvex sportstyle 700 v



red-dark red mat
0615 // 52-57 cm
0617 // 56-61 cm



green-cyan mat
0115 // 52-57 cm
0117 // 56-61 cm



cyan-marine mat
0715 // 52-57 cm
0717 // 56-61 cm



Max Schumann
Photographer: Colin Stewart



enduro

helmets

High-tech for high speed: uvex downhill helmets combine innovative technology with carefully selected materials based on the most stringent quality standards.

Michal
Prokop
Photographer: stilbezirk



from half shell to full face

Mountain bikers need a well-ventilated helmet on climbs. On descents uncompromising protection is paramount.

uvex jakkyl hde is the perfect two-in-one solution. uvex has equipped this all-mountain helmet with a removable chin guard.

“Two locking knobs securely fix the laminated glassfibre chin guard to the helmet,” says product manager Johannes Schache. “This simple mechanism requires no tools – and the whole process takes just a few seconds.”

uvex sports developers worked meticulously for a year on the new top-of-the-range enduro model.

Sketches were made, prototypes were built. The first design was discarded, along with the first technical solution for the connection mechanism. The helmet experts were finally satisfied with the third iteration.

“Our goal was the perfect balance of maximum ventilation and sufficient protection for fast descents,” explains senior designer Noah Sussmann.

“The helmet is slightly lower at the neck, there is an oversized visor – yet the goggle can still be worn on the forehead during breaks in riding.”

Double inmould technology with a second polycarbonate shell, ventilation channels just like the top race model uvex EDAero, proven Boa® system, removable liner, plus a removable chin guard, which is also available separately.

New uvex jakkyl hde combines two disciplines – all-mountain and downhill – in one product. And opens fresh trails for new possibilities.



up lock down



Ready to start in 10 seconds:
attach chin guard, secure – go!

uvex-sports.com/jakkyl

Half shell uphill. Full face downhill.

At the top of a climb 3-time downhill UCI 4cross World Champion Michal Prokop simply attaches the chin guard, to instantly transform his **uvex jakkyl hde** into a full face helmet with complete protection.

uvex jakkyl hde

PROTECTION

- double inmould technology
- standards: EN 1078 / TÜV GS / CE

ENGINEERED IN
GERMANY

FIT

- 2 shell sizes
- Boa® 360° full-ring
- monomatic
- FAS strap

COMFORT

- 14 ventilation channels
- removable chinguard
- adjustable visor
- goggle strap holder
- changeable lining
- weight from 630 g

red-petrol mat

0215 // 52-57 cm

0217 // 56-61 cm

VIEWS



RECOMMENDATION



uvex fx bike



black-dark silver mat

0115 // 52-57 cm

0117 // 56-61 cm

uvex jakkyl

PROTECTION

- double inmould technology
- standards: EN 1078 / TÜV GS / CE

ENGINEERED IN GERMANY

FIT

- 2 shell sizes
- Boa® 360° full-ring
- monomatic
- FAS strap

COMFORT

- 14 ventilation channels
- removable chinguard (optional)
- adjustable visor
- goggle strap holder
- changeable lining
- weight from 330 g



black-dark silver mat

0115 // 52-57 cm

0117 // 56-61 cm

RECOMMENDATION



uvex sportstyle 710



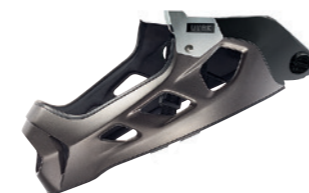
red-petrol mat

0215 // 52-57 cm

0217 // 56-61 cm

ITEM NO.: S41.0.802. ...

uvex jakkyl hde chin-guard



black mat

0100

uvex finale

PROTECTION

- double inmould technology
- standards: EN 1078 / TÜV GS / CE

MADE IN GERMANY

FIT

- 2 shell sizes
- anatomic IAS
- monomatic
- FAS strap

COMFORT

- 20 ventilation channels
- vent pads
- bug net
- removable visor xb480
- weight from 300 g

black mat

0115 // 52-57 cm

0117 // 56-61 cm

RECOMMENDATION



uvex sportstyle 702



royal blue-cyan mat

0215 // 52-57 cm

0217 // 56-61 cm



orange-red mat

0315 // 52-57 cm

0317 // 56-61 cm



purple-pink mat

0415 // 52-57 cm

core

helmets

Some riders are always on the go – on pipe or dirt – with the tough protection of the core range, uvex has reached next-level protection.

Simon
Kirchmann
Photographer: stilbezirk



uvex hlmt 9 bike

PROTECTION

- hardshell technology
- standards: EN 1078 / TÜV GS / CE

ENGINEERED IN GERMANY

FIT

- 2 shell sizes
- quick close buckle

COMFORT

- 14 ventilation channels
- adjustable visor
- bug net
- weight from 1050 g



white-blue

0303 // 53-54 cm

0304 // 55-56 cm

0305 // 57-58 cm

0306 // 59-60 cm

0307 // 61-62 cm

RECOMMENDATION



uvex fx bike



black-dark silver

0403 // 53-54 cm

0404 // 55-56 cm

0405 // 57-58 cm

0406 // 59-60 cm

0407 // 61-62 cm

uvex fx bike

PROTECTION

- 100% UVA, UVB, UVC protection

MADE IN GERMANY

FIT

- single foam
- climatic membrane
- rubber strap with silicone

COMFORT

- single lens
- supravision*
- tear-off lens set optional

FEATURES



black

2018

clear-clear // 89% S0



uvex downhill 2000 bike

PROTECTION

- 100% UVA, UVB, UVC protection

MADE IN GERMANY

FIT

- single foam
- climatic membrane
- rubber strap with silicone

COMFORT

- double lens spheric
- supravision*
- decentered lens technology

black

2228

clear-clear // 89% S0



uvex hlmt 5 bike pro

PROTECTION

- hardshell technology
- standards: EN 1078 / TÜV GS / CE

ENGINEERED IN GERMANY

FIT

- 2 shell sizes
- removable IAS
- monomatic
- FAS strap

COMFORT

- 10 ventilation channels
- x-fit core pads in two densities (5 mm and 10 mm)
- removable visor kx003
- weight from 395 g



red mat

0817 // 55-58 cm

0819 // 58-61 cm

RECOMMENDATION



uvex Igl 26



blue mat

0917 // 55-58 cm

0919 // 58-61 cm



pearl mat

1017 // 55-58 cm

1019 // 58-61 cm



black mat

0717 // 55-58 cm

0719 // 58-61 cm

uvex hlmt 5 bike

PROTECTION

- hardshell technology
- standards: EN 1078 / TÜV GS / CE

ENGINEERED IN GERMANY

FIT

- 2 shell sizes
- removable IAS
- monomatic
- FAS strap

COMFORT

- 10 ventilation channels
- x-fit core pads in two densities (5 mm and 10 mm)
- weight from 390 g

black

0117 // 55-58 cm

0119 // 58-61 cm

VIEWS



RECOMMENDATION



uvex Igl 29



grey

0217 // 55-58 cm

0219 // 58-61 cm



lime

0417 // 55-58 cm

0419 // 58-61 cm



orange

0317 // 55-58 cm

0319 // 58-61 cm

women

helmets

Safety at its best: uvex adapts easily to specific needs. This collection impresses with unique features for women and lots of extra style.



uvex ultrasonic race

PROTECTION

- double inmould technology
- standards: EN 1078 / TÜV GS / CE

MADE IN GERMANY



FIT

- 2 shell sizes
- 2k IAS, half ring
- monomatic
- FAS strap

COMFORT

- 19 ventilation channels
- vent lady pads
- bug net
- weight from 210 g

white mat-green
1415 // 52-56 cm
1417 // 55-58 cm

RECOMMENDATION



uvex sportstyle 810

uvex ultra snc

PROTECTION

- double inmould technology
- standards: EN 1078 / TÜV GS / CE

MADE IN GERMANY



FIT

- 2 shell sizes
- anatomic IAS
- monomatic
- FAS strap

COMFORT

- 19 ventilation channels
- vent lady pads
- bug net
- removable visor xb380
- weight from 235 g

white mat
0915 // 52-56 cm
0917 // 55-58 cm

AWARDS

Mountain BIKE

06/2014 very good

Trekkingbike TIPP

01/2015

KAUFTIPP 06/14 Mountain BIKE

bike 10/2014 uvex ultra snc

RECOMMENDATION



uvex sportstyle 109

uvex quatros

PROTECTION

- double inmould technology
- standards: EN 1078 / TÜV GS / CE

MADE IN GERMANY



black mat-pink
0615 // 52-57 cm

RECOMMENDATION



uvex sportstyle 202 small v

FIT

- anatomic IAS
- monomatic
- FAS strap

COMFORT

- 17 ventilation channels
- vent lady pads
- bug net
- adjustable visor
- camera adapter (optional)
- weight from 295 g



white mat-mint
0515 // 52-57 cm



white mat-green
0415 // 52-57 cm

uvex stiva cc

PROTECTION

- double inmould technology
- standards: EN 1078 / TÜV GS / CE

FIT

- anatomic IAS
- monomatic
- FAS strap

COMFORT

- 18 ventilation channels
- vent lady pads
- bug net
- removable visor xb470

- plug-in LED xb047 (optional)
- weight from 280 g

MADE IN GERMANY



black-flower blue mat
0415 // 52-57 cm

RECOMMENDATION



uvex sportstyle 114



white-flower pink mat
0315 // 52-57 cm



black-silver mat
0215 // 52-57 cm



white-silver mat
0115 // 52-57 cm

uvex onyx

PROTECTION

- inmould technology
- standards: EN 1078 / TÜV GS / CE

FIT

- 3D IAS 2.0
- monomatic
- FAS strap

COMFORT

- 17 ventilation channels
- vent lady pads
- bug net

- triangle LED (optional)
- removable visor xb320
- weight from 245 g

MADE IN GERMANY



white-silver
2615 // 52-57 cm

RECOMMENDATION



uvex sunsation



dark silver-light blue
1715 // 52-57 cm



white-red
1815 // 52-57 cm



black-silver
2515 // 52-57 cm



white-light blue
2715 // 52-57 cm



junior// kids

helmets

Bicycle, skateboard or bobby car. uvex helmets for children and teenagers are specially designed – in size and fit – to meet the specific needs of young athletes.

uvex air wing

PROTECTION

- inmould technology
- standards: EN 1078 / TÜV GS / CE

FIT

- IAS 2.0
- monomatic
- FAS strap

COMFORT

- 24 ventilation channels
- basic pads
- bug net

- plug-in LED xb039 and triangle LED (optional)
- removable visor xb390
- weight from 225 g

MADE IN GERMANY



white-red
1015 // 52-57 cm

RECOMMENDATION



uvex sportstyle 506



blue-green
0615 // 52-57 cm



dark silver-black
1115 // 52-57 cm



blue-pink
0415 // 52-57 cm



white-pink
0115 // 52-57 cm

uvex kid 3

PROTECTION

- hardshell technology
- standards: EN 1078 / TÜV GS / CE

FIT

- 2 shell sizes
- removable IAS
- monomatic
- FAS strap

COMFORT

- 10 ventilation channels
- x-fit pads in two densities (5 mm and 10 mm)
- weight from 350 g

ENGINEERED IN GERMANY

dirtbike black
0915 // 51-55 cm
0917 // 55-58 cm

RECOMMENDATION



uvex sportstyle 508



butterfly blue
0515 // 51-55 cm
0517 // 55-58 cm



blackout blue
0715 // 51-55 cm
0717 // 55-58 cm



blackout red
0815 // 51-55 cm
0817 // 55-58 cm



scary pink
0615 // 51-55 cm
0617 // 55-58 cm

uvex quatro junior

PROTECTION

- inmould technology
- standards: EN 1078 / TÜV GS / CE

FIT

- IAS 2.0
- monomatic
- FAS strap

COMFORT

- 9 ventilation channels
- basic pads
- bug net

- plug-in LED xb044 and triangle LED (optional)
- removable visor xb440
- weight from 240 g

MADE IN GERMANY



black-green
1515 // 50-55 cm

RECOMMENDATION



uvex sportstyle 507



blue-green
0915 // 50-55 cm



green-yellow
1015 // 50-55 cm



blue-white
1415 // 50-55 cm



white-pink
1315 // 50-55 cm



candy
1615 // 50-55 cm

uvex hero

PROTECTION

- inmould technology
- standards: EN 1078 / TÜV GS / CE

FIT

- IAS
- monomatic
- FAS strap

COMFORT

- 13 ventilation channels
- basic pads
- bug net

- includes triangle LED
- removable visor kx002-V2
- weight from 235 g

ENGINEERED IN GERMANY

chameleon
2115 // 49-54 cm

RECOMMENDATION



uvex sportstyle 508



hero red
2415 // 49-54 cm



hero green
2315 // 49-54 cm



flowers
2215 // 49-54 cm

uvex kid 1

PROTECTION

- inmould technology
- standards: EN 1078 / TÜV GS / CE

FIT

- 3D IAS 2.0
- monomatic
- FAS strap

COMFORT

- 17 ventilation channels
- basic pads
- bug net

- triangle LED (optional)
- weight from 205 g

MADE IN GERMANY



unicorn
0615 // 47-52 cm

RECOMMENDATION



uvex sportstyle 509



safari
0115 // 47-52 cm



rabbit race
0715 // 47-52 cm



dragons
0815 // 47-52 cm

uvex kid 2

PROTECTION

- inmould technology
- standards: EN 1078 / TÜV GS / CE

FIT

- IAS
- monomatic
- FAS strap

COMFORT

- 8 ventilation channels
- basic pads
- bug net

- triangle LED (optional)
- weight from 185 g

ENGINEERED IN GERMANY

dolly
1715 // 46-52 cm

RECOMMENDATION



uvex sportstyle 501



crocodile
1115 // 46-52 cm



bears
1415 // 46-52 cm



butterfly
1915 // 46-52 cm



sea devil
1815 // 46-52 cm

accessories

Final touches: versatile accessories, optional extras and special equipment highlights uvex's attention to detail.



accessories

ITEM NO.: **S41.9.776. ...**

uvex camera adapter

fits models: uvex quatro pro,
uvex quatro



camera adapter

0200

accessories

ITEM NO.: **S41.S.141. ...**

uvex bike cap



black (6 pcs.)

0001 // S/M 55-58 cm
0002 // L/XL 59-62 cm

accessories

ITEM NO.: **S41.9.115. ...**

uvex plug-in LED

fits models: uvex i-vo, i-vo c,
i-vo cc, city i-vo, uvex air wing



red
0100

fits models: uvex quatro junior



red
0200

fits models: uvex adige,
uvex adige cc, uvex stivo cc,
uvex stiva cc



red
0300

accessories

ITEM NO.: **S41.9.952. ...**

uvex headwear



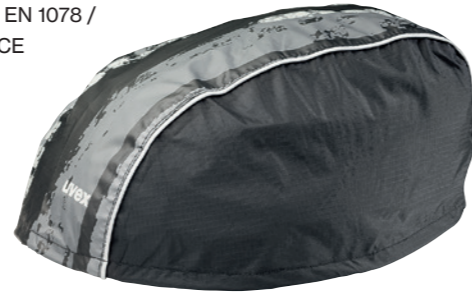
black
0100

accessories

ITEM NO.: **S41.9.950. ...**

uvex rain cap bike

inmould technology
standards: EN 1078 /
TÜV GS / CE



black/grey
0100

accessories

ITEM NO.: **S41.9.130. ...**

uvex triangle LED

fits models: uvex air wing,
uvex i-vo, i-vo c, uvex i-vo cc,
uvex quatro junior, uvex kid 1,
uvex hero, uvex kid 2



clear with red LED
1111

accessories

ITEM NO.: **S55.8.503. ...**

uvex lens set

fits model uvex fx bike:
1 set of 12, clear



tear-off lens set
0000

accessories

ITEM NO.: **S41.9.953. ...**

uvex aero rain cap



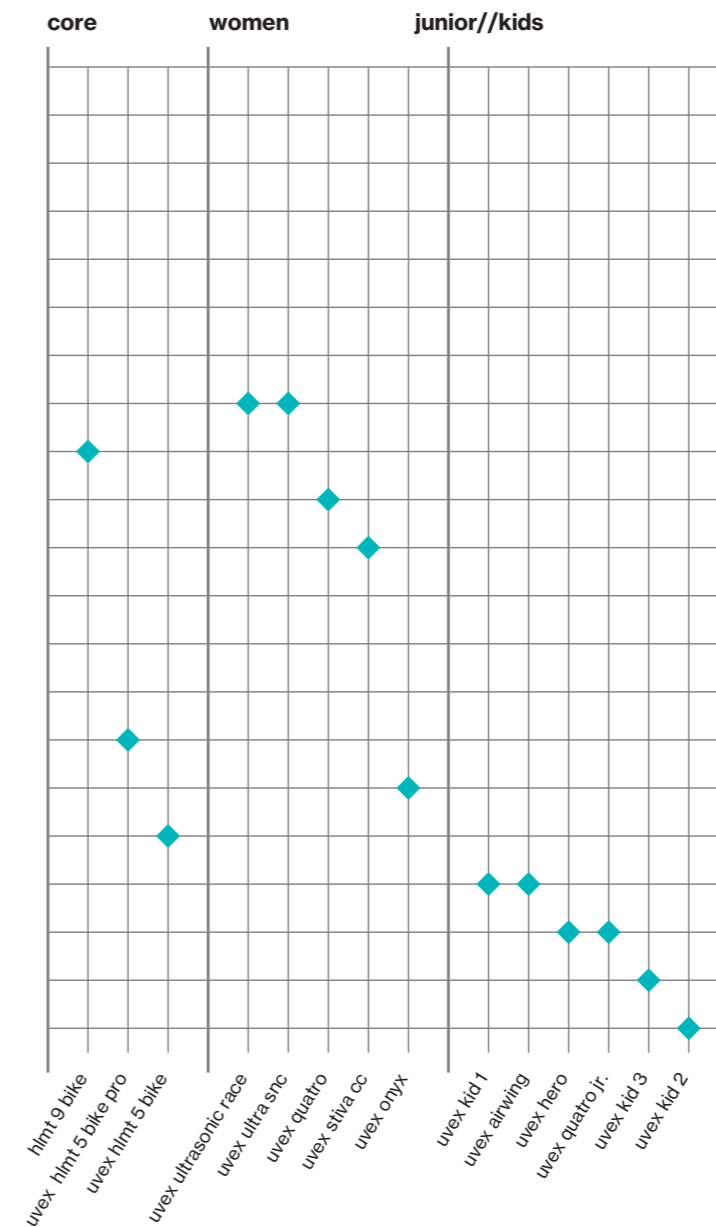
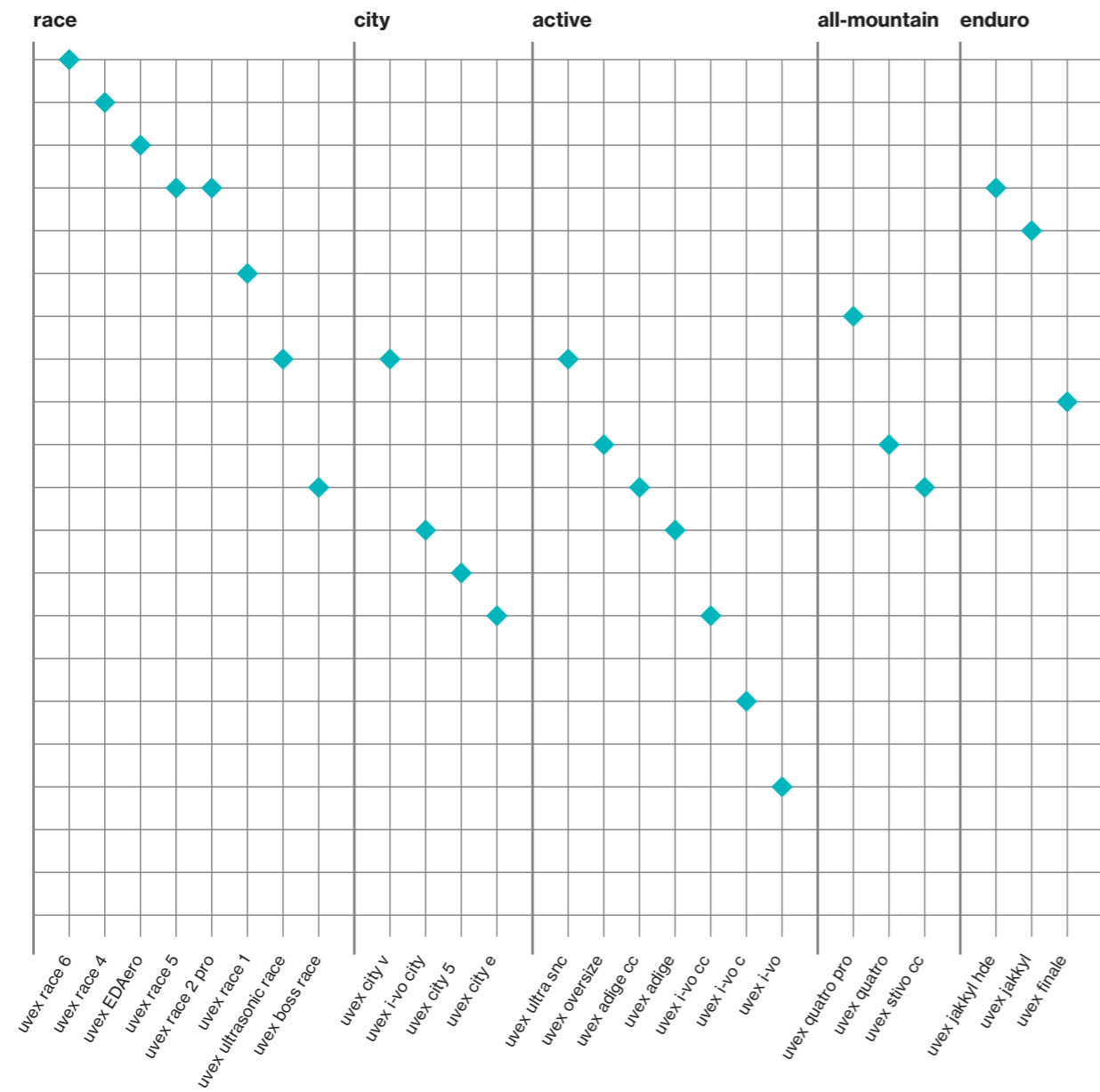
black-white
0100

yellow-black
0200

blue-black
0300

violet-black
0400

cycling Product overview



uvex-sports.com

UVEX SPORTS GmbH & Co. KG
Würzburger Straße 154
90766 Fürth
Postfach 2509 · 90715 Fürth
Germany
T +49 911/97 74-0
F +49 911/97 74-4350
E sports@uvex.de

UVEX SPORTS Austria GmbH & Co. KG
Kamerlweg 33
4600 Wels
Austria
T +43 7242 / 623 23-0
F +43 7242 / 623 23-27
E sports@uvex.at

UVEX SCHWEIZ AG
Ruessenstraße 6 A
Postfach · 6341 Baar
Switzerland
T +41 41/769 72 40
F +41 41/769 73 84
E sales@uvexsports.ch

UVEX SPORTS, INC.
60 Newark St.
Haverhill, MA 01832
U.S.
T +1 800 / 343 8335
F +1 978 / 657 8157
E uvex@uvexsports.com

UVEX SPORTS JAPAN CO., LTD.
3-6 Kanda Nishikicho, Chiyoda-ku
Tokyo 101-0054
Japan
T +81 3 / 5283 5561
F +81 3 / 5283 5562
E sugishita@uvex-sports.jp

