

 **TIOGA**
BICYCLE COMPONENTS CATALOG



Maintaining an Edge

Tioga's brand philosophy is simple: we aim to improve the quality of the cycling experience. Since 1978, this quest has led to numerous Tioga innovations, some of which have benefited the industry as a whole and set new standards in bicycle and component manufacturing still in use today.

Creating new standards is never the mission at Tioga, it is simply the means to reach our desire to continually improve the riding experience. In embracing this philosophy, Tioga often dismissed convention to push the limits of what's possible. For example, at the onset of a trend called "mountain biking" over 25 years ago, Tioga forecasted the need for a sturdier front end on the bike which could withstand the added stress that downhill and rough terrain riding placed on the bike. Finding the standard 1" headtube that had been used for decades inadequate in handling the additional stress, we created a larger diameter front end that strikes a perfect balance of added strength with minimal weight penalty. Tioga figured that the new sizing is absolutely required for the safety of all cyclists as well as for the advancement of mountain bike technologies that we rallied the industry's top manufacturers to adopt the new standard – the 1-1/8" steer tube. In creating the new standard, Tioga completely changed the way bicycles are designed and allowed designers to create stronger, faster bikes. For a number of years, the 1-1/8" steer tube size was fondly referred to as "Tioga size." To this day, "Tioga size" steer tube remains the industry standard.

Another example of Tioga's passion for improving the quality of the ride creating another innovation that advanced the cycling world was the company's development and promotion of a first true BMX tire – the Competition III. Prior to the Comp-III, BMX tires were all essentially scaled-down versions of motorcycle motocross tires, as BMX was a derivative motocross. However, Tioga's engineers realized that BMX required specialized treads that would harness the much smaller amount of power coming from the rear wheel (compared to motocross) and take full advantage of the maneuverability of BMX bikes. The result is a unique tread pattern invented for the Comp III Tire that maximized traction while offering better acceleration. Within two years of its introduction, the Comp-III became the most widely used BMX tire on the market, and is today, more than 30 years since its introduction, still one of the most recognizable tread patterns around.

Tioga's commitment to enhancing the riding experience is further evident in the development of another industry changing product, the Tioga DH saddle. Spurred on by the downhill biking trend in the late 1990's, this improvement challenged the conventional uses of the saddle and gave it a purpose beyond merely a sitting device. The clever DH saddle incorporated an extended base (3" longer than any saddle at the time) with thicker padding that allowed riders to better maneuver descents. Understanding that experienced cyclists navigating more technical terrains often grip the saddle with their thighs to better control the bike's movement, we developed an elongated saddle to provide more surface area for the riders' thighs to grip, resulting in better control during out-of-saddle maneuvering. The Tioga Downhill saddle defined the Downhill saddle segment and created numerous imitators.

Tioga's unconventional approach to addressing cyclists' needs continued with the advent of the Tioga Spyder saddle in 2006 - a first-of-its kind lightweight racing saddle offering unmatched shock absorption and comfort without the need for padding. Tioga's engineers observed that the thin padding typically found on racing saddles serves the purpose of conforming to the sit-bone for initial comfort, but does little for actual shock absorption. So instead of relying on padding to absorb shock, we decided to eliminate the pad altogether, and focus on developing a flexible shell that supports the rider's weight evenly while providing more shock-absorbing flex than conventional padding. The result is a super-lightweight racing saddle with unmatched levels of shock absorption and comfort in a stunning appearance that was a winner of the 2009 Red Dot Design Award.



The desire to improve the cycling experience remains the sole purpose of the Tioga brand. Our more recent developments include:

The Psycho Genius and Psycho Genius Venture MTB tires – the first mountain bike tire with a tread designed to actively adapt to rider input and the changing terrain environment. The new tires incorporate Tioga’s Dynamic Knob Technology which utilizes unique knob architecture matched with specially formulated rubber compounds enabling individual knobs to actually change and alter its shape, enhancing tread surface contact to increase traction as needed.



ZEROaxle pedal systems – revolutionary platform pedal system with a true breakthrough pedal body form factor that’s 100% compatible with existing crank standards. ZEROaxle pedals utilizes oversize bearing redirected inboard, which eliminates the traditional pedal spindle, permitting advantageous pedal body designs not possible with conventional construction. The ZEROaxle pedals include the MT-ZERO mountain bike pedal – with a body profile measuring a mere 7mm (and 4.5mm at the thinnest), it’s the thinnest dual-concave pedal in the world. More stunningly unique ZEROaxle pedals will be available in the near future to further establish Tioga as a true innovator of cycling components.



DualTech Spydres, the second generation Spyder Saddles – Utilizing an innovative two-piece “DualTech” construction process, the second generation Spyder saddles are the most flexible and durable Spyder saddles ever. DualTech starts with a springy flexile web cover which is then seamlessly fused to an impact resistant open frame. Under-side support structures embedded in the frame are strategically placed to balance seated support with flex. Together, the new generation of Spyder saddles cocoons you when seated and remains pliable to continually absorb energy from bumps in ways not possible with conventional padded saddles.



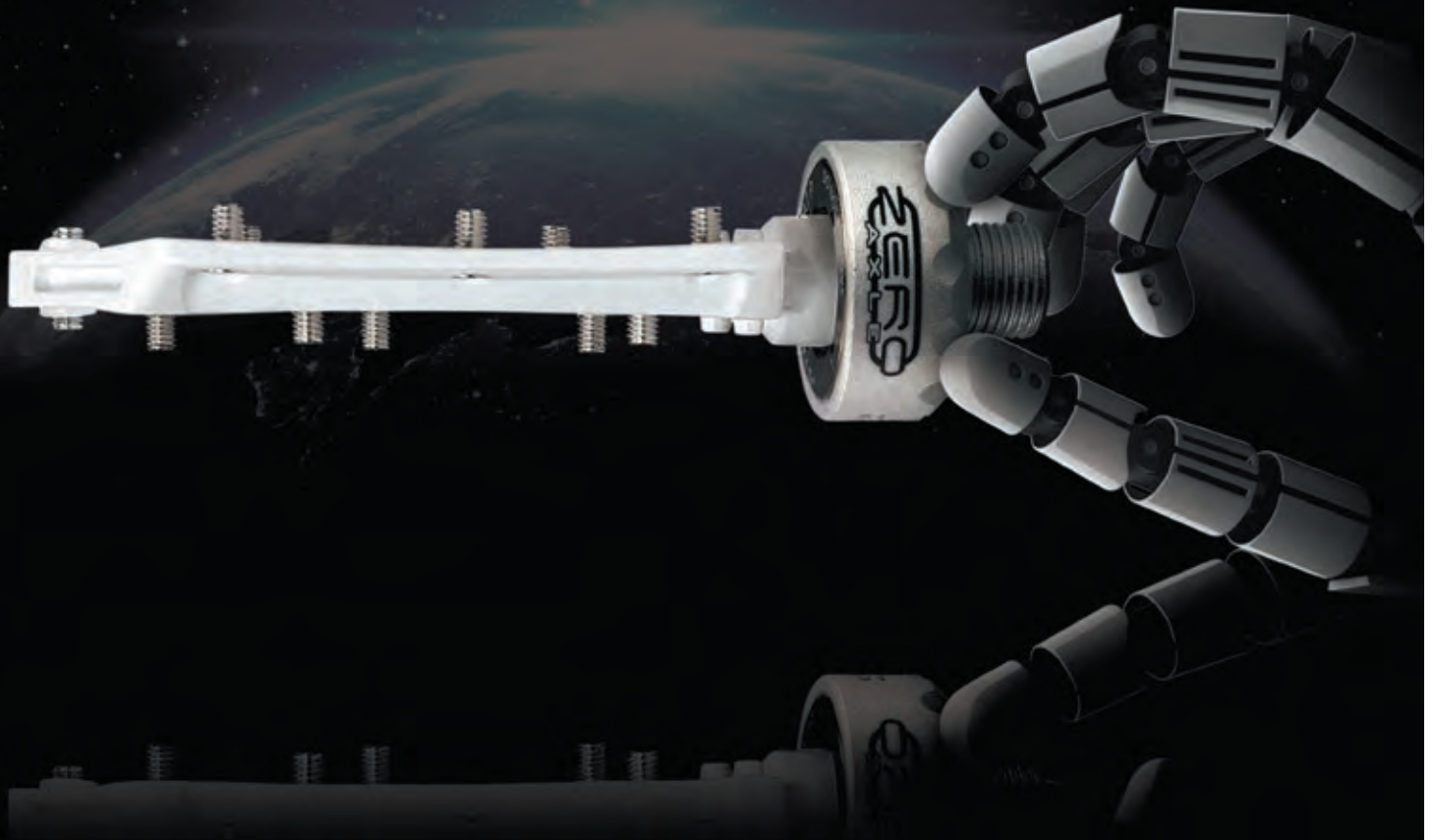
Your support is validation that Tioga is improving your cycling experience. Thank you.



 **TIOGA**
www.tiogausa.com



ZERO AXLE



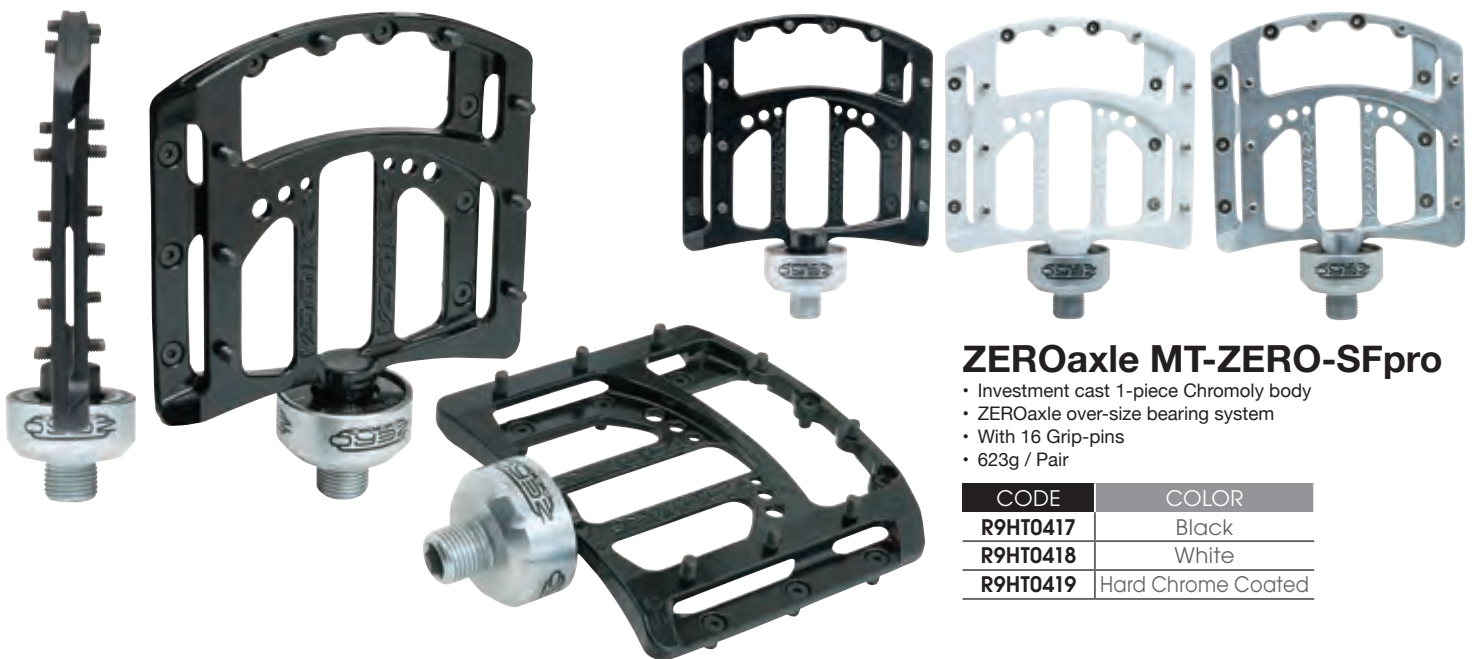
World's THINNEST dual-concave pedal

Made possible by Tioga's breakthrough ZEROaxle bearing system, the MT-ZERO measures no more than 7mm thin (4mm at the thinnest). ZEROaxle pedals amplify ground clearance, increase foot stability, and improve pedaling efficiency over conventional pedals. More details on tiogausa.com

1-PC CRO. MO. BODY | MACHINE-PRESSED SEALED CARTRIDGE BEARINGS | 450G PER PAIR



**ZERO
AXLE**



ZEROaxle MT-ZERO-SFpro

- Investment cast 1-piece Chromoly body
- ZEROaxle over-size bearing system
- With 16 Grip-pins
- 623g / Pair

| CODE | COLOR |
|----------|--------------------|
| R9HT0417 | Black |
| R9HT0418 | White |
| R9HT0419 | Hard Chrome Coated |



ZEROaxle MT-ZERO-01

- Investment cast 1-piece Chromoly body
- ZEROaxle over-size bearing system
- Dual-concave platform with 14 Grip-pins
- 530g / Pair

| CODE | COLOR |
|----------|--------|
| R9HT0384 | Black |
| R9HT0383 | White |
| R9HT0385 | Silver |



ZEROaxle SS-ZERO-01

- Chromoly body / Aluminum Cage
- ZEROaxle over-size bearing system
- 356g / Pair

| CODE | COLOR |
|----------|--------|
| R9HT0387 | Black |
| R9HT0386 | Gold |
| R9HT0388 | Silver |



ZEROaxle CT-ZERO-01

- Chromoly body / Aluminum Cage
- ZEROaxle over-size bearing system
- 388g / Pair

| CODE | COLOR |
|----------|--------|
| R9HT0390 | Black |
| R9HT0389 | Gold |
| R9HT0391 | Silver |

The ZEROaxle pedal system is modular and designed to be virtually maintenance free.

Should the bearing wear down, simply replace the ZEROaxle bolt. The same applies to the body. Replacement ZEROaxle bolt and MT-ZERO body are available individually, in left or right configurations. Its modular design will also allow users to easily switch different body designs from any current and future ZEROaxle pedals.

REPLACEMENT BEARING UNIT

| CODE | MODEL |
|----------|--------------|
| R9ZA1374 | RIGHT |
| R9ZA1375 | LEFT |
| R9ZA1376 | RIGHT & LEFT |





SPYDER

Spyder DAZZ MX **NEW**

- 6061-T6 Alloy Die-casting Body
- 2DU Bearings
- Boron 9/16" Axle
- With 14 Grip-pins
- 8 Mold pins
- L105 x W93 x H25mm
- 415g(without pins) / Pair

| CODE | COLOR |
|----------|-------|
| R9ZA2330 | Black |
| R9ZA2331 | White |



Spyder DAZZ Lite **NEW**

- Engineering Plastic Body
- 2DU Bearings
- Boron 9/16" Axle
- 12 Mold pins
- L95 x W72 x H25mm
- 240g / Pair

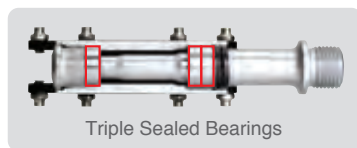
| CODE | COLOR |
|----------|-------|
| R9ZA2327 | Black |
| R9ZA2328 | White |



D-SPYDER PEDAL

- 6061-T6 Alloy CNC
- Triple Sealed Bearings
- Chromoly 9/16" Axle
- With 16 Grip-pins
- L90 x W72 x H20mm
- 315g (without pins) / Pair

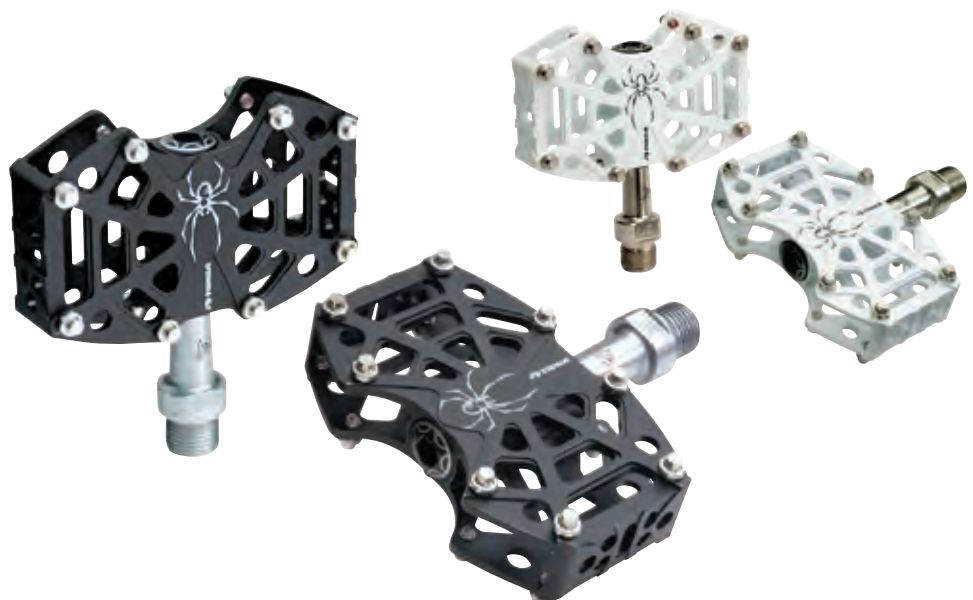
| CODE | COLOR |
|----------|-------|
| R9HT0352 | Black |
| R9HT0353 | White |



SPYDER PEDAL

- 6061-T6 Alloy CNC
- Sealed Bearings
- Chromoly 9/16" Axle
- With 16 Grip-pins
- L90 x W58 x H19mm
- 260g (without pins) / Pair

| CODE | COLOR |
|----------|-------|
| R9HT0336 | Black |
| R9HT0342 | White |





SUREFOOT SLIM

- Engineering Plastic Body
- Ball Bearings
- Chromoly 9/16" Axle
- Dual concave platform
- 18 Mold pins
- L100 x W110 x H28mm
- (Thinnest Part : 10mm)
- 330g / Pair

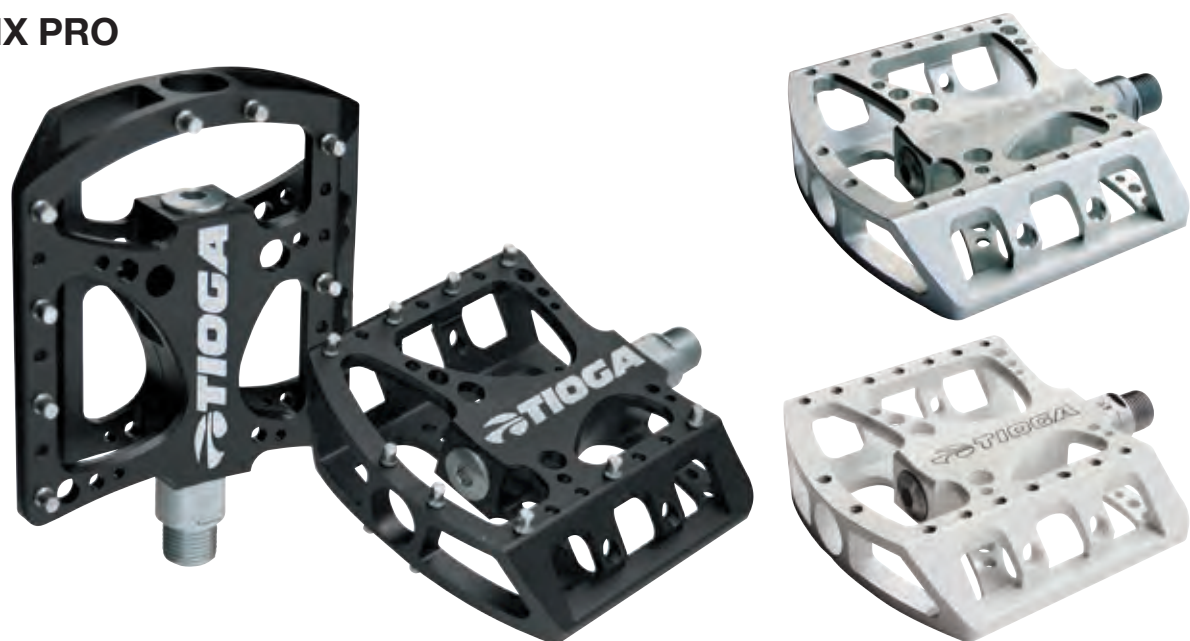
| CODE | COLOR |
|----------|-------|
| R9HT0405 | Black |
| R9HT0406 | White |
| R9ZA1133 | Blue |
| R9ZA1134 | Red |
| R9ZA1135 | Green |
| R9ZA1136 | Clear |



SUREFOOT MX PRO

- 6061-T6 Alloy CNC
- Sealed Bearings
- Chromoly 9/16" Axle
- 40 Grip-pins included
- L105 x W100 x H25mm
- 450g (without pins) / Pair

| CODE | COLOR |
|----------|--------|
| R9HT0363 | Black |
| R9HT0364 | Silver |
| R9HT0365 | White |



MX COMP PEDAL

- 6061-T6 Alloy Die-casting Body
- Ball Bearings
- Chromoly 9/16" Axle
- With 14 Grip-pins
- L106 x W100 x H23mm
- 460g (without pins) / Pair

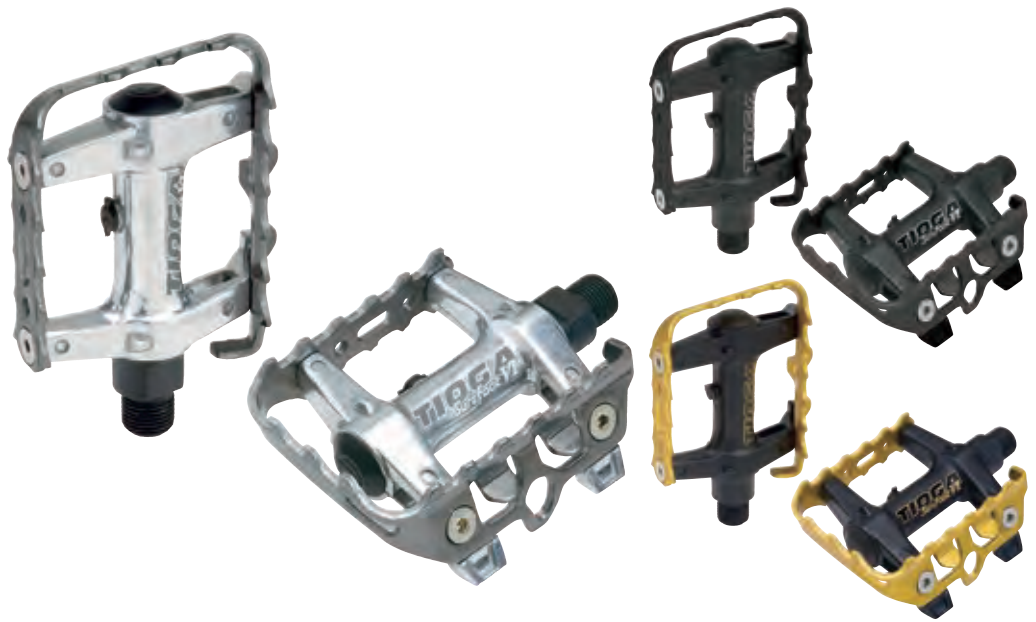
| CODE | COLOR |
|----------|--------|
| R9HT0349 | Black |
| R9HT0350 | Silver |
| R9HT0340 | White |



SUREFOOT 6

- 6061-T6 Alloy Die-casting Body & Alloy Cage
- Ball Bearings
- With Double-flip
- With Grease Port
- Chromoly 9/16" Axle
- L74 x W90 x H32mm
- 322g / Pair

| CODE | COLOR |
|----------|------------------------|
| R9ZA0836 | Black (Black Body) |
| R9ZA0837 | Gold (Black Body) |
| R9ZA0838 | Gunmetal (Silver Body) |



SUREFOOT 7

- 6061-T6 Alloy Die-casting Body & Alloy Cage
- Sealed Bearings
- Chromoly 9/16" Axle
- L64 x W95 x H22mm
- 267g / Pair

| CODE | COLOR |
|----------|---------------------|
| R9HT0177 | Black (Silver Body) |



SUREFOOT 9

- 6061-T6 Alloy CNC
- Sealed Bearings
- Chromoly 9/16" Axle
- With 16 Grip-pins
- L100 x W57 x H18mm
- 248g (without pins) / Pair

| CODE | COLOR |
|----------|-------|
| R9ZA0939 | Black |
| R9ZA0980 | C.P. |



SUREFOOT 8

- 6061-T6 Alloy CNC
- Sealed Bearings
- Chromoly 9/16" Axle
- With 16 Grip-pins
- L90 x W58 x H19mm
- 255g (without pins) / Pair

| CODE | COLOR |
|----------|--------|
| R9HT0344 | Black |
| R9HT0345 | Silver |



SUREFOOT MINI

- 6061-T6 Alloy CNC
- Sealed Bearings
- Chromoly 9/16" Axle
- L62 x W70 x H20mm
- 208g / Pair

| CODE | COLOR |
|----------|-------|
| R9ZA0784 | Black |
| R9ZA0785 | White |
| R9ZA0786 | Gold |

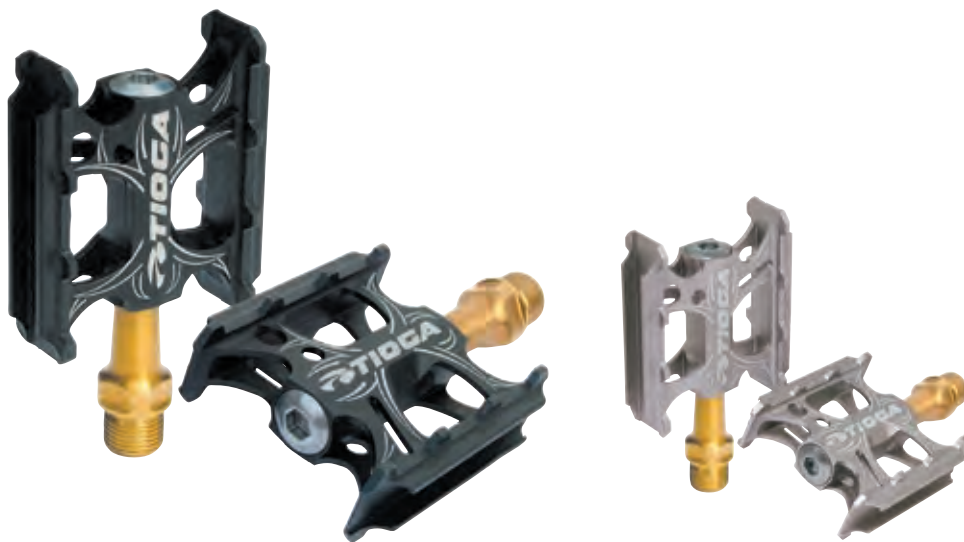


SUREFOOT COMPACT

Ti AXLE

- 6061-T6 Alloy CNC
- Sealed Bearings
- Titanium 9/16" Axle
- L62 x W70 x H20mm
- 164g / Pair

| CODE | COLOR |
|----------|--------------|
| R9HT0376 | Black |
| R9HT0377 | Titan-Silver |

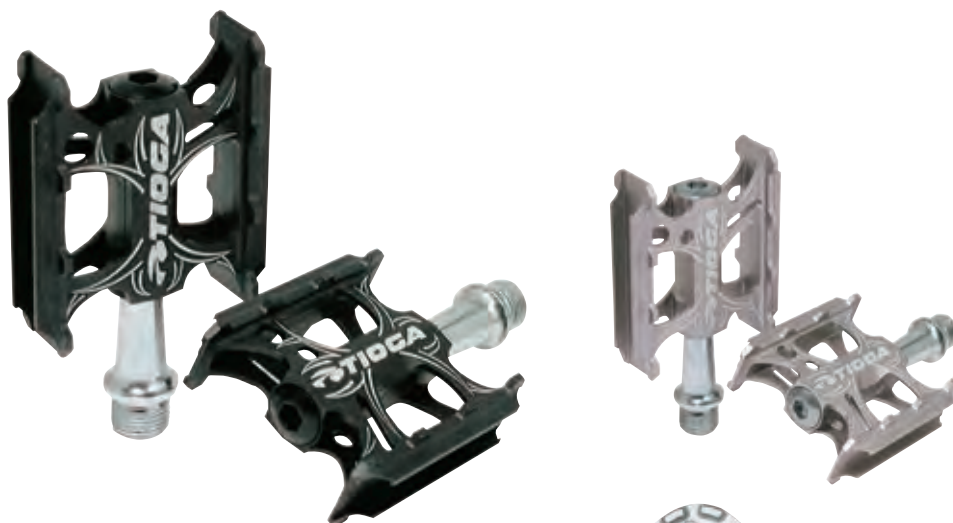


SUREFOOT COMPACT

CrMo AXLE

- 6061-T6 Alloy CNC
- Sealed Bearings
- Chromoly 9/16" Axle
- L62 x W70 x H20mm
- 204g / Pair

| CODE | COLOR |
|----------|--------------|
| R9HT0324 | Black |
| R9HT0323 | Titan-Silver |



EASY FOOT

TIGGA
Acentia

- 6061-T6 Alloy Die-casting Body & Kraton Rubber Top
- Dual Concave Shape
- Ball Bearings
- Chromoly 9/16" Axle
- L93 x W90 x H25mm
- 480g / Pair

| CODE | COLOR |
|----------|--------|
| R9ZA0783 | Silver |



MX COMP FOOT PEG

- Steel
- Ø38 x 110mm
- 552g / Pair

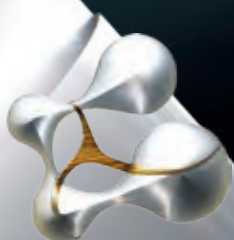
| CODE | COLOR |
|----------|-------|
| R9ZA0561 | Black |
| R9ZA0690 | C.P. |



Fits 14mm axle, or
10mm axle with bushing



comes alive
to keep control



futuristic classic

TIOGA

www.tiogausa.com





PSYCHO GENIUS FAST 13

- Synergy S Dual Compound
- 120TPI Casing + Tubeless Ready
- Kevlar Bead

| CODE | SIZE | WEIGHT |
|-----------------|-------------|--------|
| R9ZA1314 | 27.5 x 2.10 | 645g |
| BCIR0968 | 27.5 x 2.25 | 687g |
| R9ZA1315 | 27.5 x 2.35 | 720g |
| BCIR0966 | 29 x 2.10 | 697g |
| R9ZA1316 | 29 x 2.35 | 780g |

COME ALIVE
to keep control



TIOGA
www.tiogausa.com

PSYCHO GENIUS VENTURE

- Synergy S Dual Compound or Trident 3-layer Rubber Compound(BCIR0939 Only)
- Mag60 Casing or Mag60+ Reinforced Casing(BCIR0939 Only)
- Steel Bead or Kevlar Bead

| CODE | SIZE | WEIGHT |
|----------|---|--------|
| BCIR0935 | 26 x 2.35 (Synergy S Dual Compound / Mag 60 Casing / Kevlar Bead) | 727g |
| BCIR0936 | 26 x 2.35 (Synergy S Dual Compound / Mag 60 Casing / Steel Bead) | 797g |
| BCIR0937 | 26 x 2.50 (Synergy S Dual Compound / Mag 60 Casing / Kevlar Bead) | 863g |
| BCIR0938 | 26 x 2.50 (Synergy S Dual Compound / Mag 60 Casing / Steel Bead) | 933g |
| BCIR0939 | 26 x 2.50 (Trident 3-layer Rubber Compound / Mag 60+ Reinforced Casing / Steel Bead) | 1,240g |
| R9ZA1107 | 29 x 2.40 (Synergy S Dual Compound / Mag 60 Casing / Kevlar Bead) | 895g |
| BCIR0985 | 29 x 2.40 (Synergy S Dual Compound / Mag 60 Casing / Steel Bead) | 965g |

PSYCHO GENIUS VENTURE TUBELESS READY

- Synergy S Dual Compound
- 120TPI Casing + Tubeless Ready
- Kevlar Bead

| CODE | SIZE | WEIGHT |
|----------|-------------|--------|
| BCIR0961 | 27.5 x 2.35 | 787g |





PSYCHO GENIUS

- Synergy Dual Compound
- Mag60 Casing
- Steel Bead or Kevlar Bead

| CODE | SIZE | WEIGHT |
|----------|-------------------------|--------|
| BCIR0921 | 26 x 1.95 (Kevlar Bead) | 640g |
| BCIR0992 | 26 x 1.95 (Steel Bead) | 710g |
| BCIR0904 | 26 x 2.10 (Kevlar Bead) | 690g |
| BCIR0903 | 26 x 2.10 (Steel Bead) | 760g |
| BCIR0901 | 26 x 2.30 (Kevlar Bead) | 790g |
| BCIR0900 | 26 x 2.30 (Steel Bead) | 860g |
| R9ZA0851 | 29 x 2.25 (Kevlar Bead) | 815g |
| BCIR0930 | 29 x 2.25 (Steel Bead) | 890g |

PSYCHO GENIUS TUBELESS

- Synergy Dual Compound
- Mag60 Casing
- UST Tubeless
- Kevlar Bead

| CODE | SIZE | WEIGHT |
|----------|-----------|--------|
| BCIR0920 | 26 x 1.95 | 805g |
| BCIR0928 | 26 x 2.20 | 880g |

PSYCHO GENIUS TUBELESS READY

- Synergy Dual Compound
- 120TPI Casing
- Kevlar Bead

| CODE | SIZE | WEIGHT |
|---------------------|-------------|--------|
| NEW R9ZA1369 | 26 x 2.20 | 770g |
| R9ZA1319 | 27.5 x 2.30 | 840g |
| R9ZA1317 | 29 x 2.25 | 845g |



 **TIOGA**

www.tiogausa.com

FRONT

REAR

FACTORY DH

- AP Rubber
- 60TPI Casing
- Steel Bead

FRONT

| CODE | SIZE | WEIGHT |
|----------|-----------|--------|
| BCIR0592 | 26 x 2.10 | 980g |
| BCIR0593 | 26 x 2.30 | 1,080g |

REAR

| CODE | SIZE | WEIGHT |
|----------|-----------|--------|
| BCIR0604 | 26 x 2.10 | 980g |
| BCIR0605 | 26 x 2.30 | 1,080g |



FRONT

REAR

FACTORY XC

- AP Rubber
- 60TPI Casing
- Steel Bead or Kevlar Bead

FRONT

| CODE | SIZE |
|----------|-------------------------|
| BCIR0549 | 26 x 1.95 (Steel Bead) |
| BCIR0547 | 26 x 1.95 (Kevlar Bead) |

REAR

| CODE | SIZE |
|----------|-------------------------|
| BCIR0553 | 26 x 1.95 (Steel Bead) |
| BCIR0551 | 26 x 1.95 (Kevlar Bead) |



EXTREME

- AP Rubber
- 60TPI Casing
- Kevlar Bead

| CODE | SIZE | WEIGHT |
|----------|-----------|--------|
| BCIR0557 | 26 x 2.10 | 570g |





FASTRACK

- AP Rubber
- 60TPI Casing
- Steel Bead or Kevlar Bead

| CODE | SIZE | WEIGHT |
|---------------------|---------------------------|--------|
| R9ZA1318 | 26 x 1.95 (Steel Bead) | 590g |
| BCIR0980 | 26 x 1.95 (Kevlar Bead) | 520g |
| NEW R9ZA1399 | 27.5 x 2.10 (Kevlar Bead) | 570g |



PSYCHO II

- AP Rubber
- 60TPI Casing
- Steel Bead

| CODE | SIZE | WEIGHT |
|-----------------|-----------|--------|
| BCIR0794 | 26 x 1.95 | 710g |





FS100

- AP Rubber
- 60TPI Casing
- Steel Bead

| CODE | SIZE | WEIGHT |
|----------|-----------|--------|
| BCIR0771 | 26 x 2.10 | 760g |
| BCIR0772 | 26 x 2.30 | 810g |



REFLECTIVE CITY SLICKER

- High Energy Rubber
- 60TPI Casing
- Steel Bead
- Reflective Sidewall Stripe

| CODE | SIZE | WEIGHT |
|----------|-----------|--------|
| R9ZA1341 | 26 x 1.50 | 555g |
| R9ZA1342 | 700 x 32C | 460g |



CITY SLICKER

- High Energy Rubber
- 60TPI Casing
- Steel Bead

| CODE | SIZE | WEIGHT |
|---------------------|-------------|--------|
| BCIR0624 | 26 x 1.00 | 250g |
| BCIR0626 | 26 x 1.25 | 390g |
| BCIR0628 | 26 x 1.50 | 500g |
| BCIR0630 | 26 x 1.95 | 750g |
| NEW R9ZA1397 | 27.5 x 1.50 | 540g |
| NEW R9ZA1398 | 700 x 28C | 390g |
| BCIR0675 | 700 x 32C | 360g |
| BCIR0677 | 700 x 38C | 375g |



CITY SLICKER II

- AP Rubber
- 60TPI Casing
- Steel Bead

| CODE | SIZE | WEIGHT |
|-----------------|-----------|--------|
| R9ZA0693 | 26 x 1.50 | 430g |
| BCIR0811 | 700 x 38C | 530g |

e-COMODO

- UTC Rubber
- 27TPI Casing
- Steel Bead

| CODE | SIZE | WEIGHT |
|-----------------|------------|--------|
| R9ZA0804 | 26 x 1.3/8 | 565g |
| BCIR0887 | 700 x 42C | N.A. |



COMODO

- High Energy Rubber
- 60TPI Casing
- Steel Bead

| CODE | SIZE | COLOR | WEIGHT |
|-----------------|-----------|-------|--------|
| BCIR0886 | 26 x 1.50 | Black | 510g |
| R9IR0130 | 26 x 1.75 | Black | 520g |
| BCIR0880 | 700 x 25C | Black | 360g |
| R9ZA0848 | | White | |
| R9IR0132 | 700 x 30C | Black | 430g |
| R9IR0133 | 700 x 38C | Black | 475g |





FACTORY TRIMLINE SF

- Dual Compound Rubber
- Cylex Casing
- Kevlar Bead

| CODE | SIZE | WEIGHT |
|----------|-----------|--------|
| BCIR0709 | 700 x 23C | 200g |



FACTORY TRIMLINE S

- Dual Compound Rubber
- Cylex Casing
- Kevlar Bead

| CODE | SIZE | WEIGHT |
|----------|-----------|--------|
| BCIR0707 | 700 x 23C | 200g |



TRIMLINE S

- Dual Compound Rubber
- 60TPI Casing
- Kevlar Bead

| CODE | SIZE | WEIGHT |
|----------|-----------|--------|
| BCIR0780 | 700 x 23C | 200g |

TRIMLINE F

- Dual Compound Rubber
- 60TPI Casing
- Kevlar Bead

| CODE | SIZE | WEIGHT |
|----------|-----------|--------|
| BCIR0737 | 700 x 23C | 220g |

TIOGA
www.tiogausa.com







FASTR BLK LBL **BLK** **NEW**

- UTC Rubber
- Cylex (120TPI) Ultralight Casing
- PNEUMAX 110PSI High-Pressure Casing
- AVNTGUARD Cut Protection Layer
- Kevlar Bead

| CODE | SIZE | WEIGHT |
|-----------------|-----------|--------|
| R9ZA2666 | 20 x 1.75 | 345g |
| R9ZA2151 | 20 x 1.85 | 370g |

FASTR S-SPEC **NEW**

- UTC Rubber
- Cylex (120TPI) Ultralight Casing
- Kevlar Bead

| CODE | SIZE | WEIGHT |
|-----------------|-----------|--------|
| R9ZA2667 | 20 x 1.75 | 300g |
| R9ZA2152 | 20 x 1.85 | 320g |



FASTR REACT BLK LBL **BLK** **NEW**

- UTC Rubber
- Cylex (120TPI) Ultralight Casing
- PNEUMAX 110PSI High-Pressure Casing
- AVNTGUARD Cut Protection Layer
- Kevlar Bead

| CODE | SIZE | WEIGHT |
|-----------------|-----------|--------|
| R9ZA2153 | 20 x 1.60 | 320g |
| R9ZA2164 | 20 x 1.75 | 345g |

FASTR REACT S-SPEC **NEW**

- UTC Rubber
- Cylex (120TPI) Ultralight Casing
- Kevlar Bead

| CODE | SIZE | WEIGHT |
|-----------------|-----------|--------|
| R9ZA2154 | 20 x 1.60 | 280g |
| R9ZA2165 | 20 x 1.75 | 300g |



OS/20 x 1.60

OS/20 x 1.85

* OS20 = ETRTO 451



POWER BLOCK OS20 S-SPEC **NEW**

- UTC Rubber
- CYLEX + 120TPI Casing
- Kevlar Bead

| CODE | SIZE | WEIGHT |
|-----------------|-------------|--------|
| R9ZA1348 | OS20 x 1.60 | N/A |
| R9ZA1349 | OS20 x 1.85 | N/A |

POWER BLOCK OS20

- UTC Rubber
- 60TPI Casing
- Steel Bead

| CODE | SIZE | WEIGHT |
|-----------------|-------------|--------|
| R9ZA1350 | OS20 x 1.60 | 345g |
| R9ZA1351 | OS20 x 1.85 | 435g |

OS20 RIM - FRONT

- 6061-T6 Aluminum
- Double Wall
- Pin Joint
- RimWidth : 22mm
- 36H
- 465g
- for American Valve
- White



OS20 RIM - REAR

- 6061-T6 Aluminum
- Double Wall (Machined)
- Pin Joint
- RimWidth : 22mm
- 36H
- 465g
- for American Valve
- White



OS20 INNER TUBE - AMERICAN VALVE

| CODE | SIZE | ETRTO | VALVE |
|-----------------|--------------------|-----------|-------|
| R9ZA1354 | OS20 x 1.60 ~ 1.95 | 41/49-451 | 36mm |



OS20 NYLON RIM TAPE **NEW**

| CODE | SIZE | ETRTO | COLOR |
|-----------------|-------------|-------|--------|
| R9ZA1355 | OS20 x 27mm | 451 | Yellow |

POWER BLOCK S-SPEC



- UTC Rubber
- Cylex Casing
- Kevlar Bead

| | CODE | SIZE | WEIGHT |
|------------|-----------------|------------|--------|
| NEW | R9ZA1353 | 20 x 1.1/8 | 200g |
| NEW | R9ZA1352 | 20 x 1.3/8 | 265g |
| | BCIR0865 | 20 x 1.60 | 240g |
| | BCIR0866 | 20 x 1.75 | 310g |
| | BCIR0871 | 20 x 1.95 | 330g |
| NEW | BCIR0867 | 20 x 2.10 | 350g |

POWER BLOCK

- UTC Rubber
- 60TPI Casing
- Steel Bead

| | CODE | SIZE | WEIGHT |
|------------|-----------------|------------|--------|
| | BCIR0855 | 20 x 1.1/8 | 280g |
| | BCIR0854 | 20 x 1.3/8 | 355g |
| | BCIR0906 | 20 x 1.40 | 295g |
| | BCIR0851 | 20 x 1.60 | 305g |
| | BCIR0850 | 20 x 1.75 | 325g |
| | BCIR0873 | 20 x 1.95 | 380g |
| NEW | BCIR0849 | 20 x 2.10 | 400g |
| | R9ZA1043 | 24 x 1.40 | 335g |
| | R9ZA1044 | 24 x 1.60 | 395g |
| | BCIR0852 | 24 x 1.75 | 450g |
| | R9ZA1045 | 24 x 2.10 | 510g |

POWER BLOCK 26

- UTC Rubber
- 60TPI Casing
- Steel Bead or Kevlar Bead

| | CODE | SIZE | WEIGHT |
|--|-----------------|-------------------------|--------|
| | R9ZA1046 | 26 x 2.10 (Steel Bead) | 595g |
| | BCIR0949 | 26 x 2.10 (Kevlar Bead) | 525g |



POWER BAND S-SPEC



- UTC Rubber
- Cylex Casing
- Kevlar Bead

| | CODE | SIZE | WEIGHT |
|--|-----------------|-----------|--------|
| | BCIR0908 | 20 x 1.85 | 295g |

POWER BAND

- UTC Rubber
- 60TPI Casing
- Steel Bead

| | CODE | SIZE | WEIGHT |
|--|-----------------|-----------|--------|
| | BCIR0909 | 20 x 1.85 | 345g |



STREET BLOCK S-SPEC

- UTC Rubber
- 60TPI, 110PSI High Pressure Casing
- Kevlar Bead

| CODE | SIZE | WEIGHT |
|-----------------|-----------|--------|
| BCIR0914 | 20 x 1.95 | 465g |
| BCIR0912 | 20 x 2.15 | 545g |
| BCIR0910 | 20 x 2.25 | 575g |

STREET BLOCK

- UTC Rubber
- 60TPI, 110PSI High Pressure Casing
- Steel Bead

| CODE | SIZE | WEIGHT |
|-----------------|-----------|--------|
| BCIR0915 | 20 x 1.95 | 540g |
| BCIR0913 | 20 x 2.15 | 600g |
| BCIR0911 | 20 x 2.25 | 620g |



COMP III

- UTC Rubber
- 60TPI Casing
- Steel Bead

| CODE | SIZE | WEIGHT |
|-----------------|------------|--------|
| BCIR0647 | 20 x 1.1/8 | 260g |
| BCIR0651 | 20 x 1.3/8 | 300g |
| BCIR0655 | 20 x 1.50 | 340g |
| BCIR0659 | 20 x 1.75 | 380g |
| BCIR0663 | 20 x 2.125 | 460g |



FS100

- UTC Rubber
- 60TPI Casing
- Steel Bead

| CODE | SIZE | WEIGHT |
|-----------------|-----------|--------|
| BCIR0636 | 20 x 2.10 | 740g |
| R9ZA1439 | 20 x 2.25 | N/A |
| BCIR0773 | 24 x 2.10 | 700g |

NEW



COMODO

TIGGA Aconita

NEW

- High Energy Rubber
- 60TPI Casing
- Steel Bead

| CODE | SIZE | WEIGHT |
|-----------------|-----------|--------|
| R9ZA1400 | 20 x 1.50 | XXXg |



NYLON RIM TAPE

NEW

| CODE | SIZE | ETRTO | COLOR | WEIGHT |
|-----------------|-------------|-------|--------|--------|
| R9ZA0864 | 24 x 17mm | 507 | Black | 30g |
| R9ZA0518 | 26 x 17mm | 559 | Black | 35g |
| R9ZA0519 | 26 x 27mm | 559 | Black | 50g |
| R9ZA1257 | 27.5 x 20mm | 584 | Black | 45g |
| R9ZA1258 | 27.5 x 27mm | 584 | Black | 55g |
| R9ZA0865 | 29 x 27mm | 622 | Black | 60g |
| R9ZA0520 | 700C x 17mm | 622 | Red | 35g |
| R9ZA1355 | OS20 x 27mm | 451 | Yellow | N/A |
| R9ZA0863 | 20 x 17mm | 451 | Yellow | 30g |
| R9ZA0521 | 20 x 17mm | 406 | Yellow | 30g |
| R9ZA0522 | 20 x 27mm | 406 | Yellow | 40g |





AMERICAN VALVE

| CODE | SIZE | ETRTO | VALVE |
|----------|--------------------|-----------|-------|
| R9ZA1360 | 12.1/2 x 2.1/2 | 63-203 | 36mm |
| R9IS0158 | 14 x 1.75 ~ 2.125 | 47/57-254 | |
| R9ZA1361 | 16 x 1.75 ~ 2.125 | 47/57-305 | |
| R9IS0162 | 18 x 1.75 ~ 2.125 | 47/57-355 | |
| R9ZA1368 | 20 x 1.50 ~ 1.75 | 40/47-406 | |
| R9ZA1362 | 20 x 1.75 ~ 2.125 | 47/57-406 | |
| R9ZA1366 | 20 x 1.1/8 | 28/451 | |
| R9ZA1359 | 20 x 1.3/8 | 37/451 | |
| R9ZA1354 | OS20 x 1.60 ~ 1.95 | 41/49-451 | |
| R9ZA1244 | 24 x 1.40 ~ 1.60 | 35/47-507 | |
| R9IS0168 | 24 x 1.75 ~ 2.125 | 47/57-507 | |
| R9IS0094 | 26 x 1.00 ~ 1.25 | 26/32-559 | |
| R9IS0101 | 26 x 1.50 ~ 1.75 | 40/47-559 | |
| R9IS0109 | 26 x 1.80 ~ 2.125 | 47/57-559 | |
| R9IS0173 | 26 x 2.30 ~ 2.50 | 57/62-559 | |
| R9IS0143 | 26 x 2.50 ~ 2.70 | 62/67-559 | |
| R9ZA1245 | 27.5 x 1.50 ~ 1.75 | 40/47-584 | |
| BCIS0548 | 27.5 x 1.90 ~ 2.35 | 47/57-584 | |
| R9ZA0868 | 29 x 1.90 ~ 2.35 | 47/57-622 | |
| R9ZA1365 | 700 x 35 ~ 43C | 35/43-622 | |

FRENCH VALVE

| CODE | SIZE | ETRTO | VALVE | |
|---------------------|--------------------|-----------|-------|------|
| R9ZA0876 | 20 x 1.40 ~ 1.75 | 35/47-406 | 36mm | |
| R9ZA0877 | 20 x 1.75 ~ 2.125 | 47/57-406 | | |
| R9ZA0874 | 20 x 1.1/8 | 28-451 | | |
| R9ZA1358 | 20 x 1.3/8 | 37-451 | | |
| R9ZA1250 | 24 x 1.40 ~ 1.60 | 35/47-507 | | |
| R9IS0171 | 26 x 1.00 ~ 1.25 | 26/32-559 | | |
| R9IS0102 | 26 x 1.50 ~ 1.75 | 40/47-559 | | |
| R9ZA1377 | 26 x 1.80 ~ 2.125 | 47/57-559 | | |
| R9IS0174 | 26 x 2.30 ~ 2.50 | 57/62-559 | | |
| R9ZA1363 | 650 x 18 ~ 28C | 18/28-571 | | |
| BCIS0549 | 27.5 x 1.90 ~ 2.35 | 47/57-584 | | |
| R9IS0123 | 700 x 18 ~ 25C | 18/25-622 | | |
| R9ZA1367 | 700 x 25 ~ 32C | 25/32-622 | | |
| R9ZA1364 | 700 x 35 ~ 43C | 35/43-622 | | |
| NEW R9ZA1433 | 20 x 1.40 ~ 1.75 | 35/47-406 | | 48mm |
| NEW R9ZA1434 | 20 x 1.75 ~ 2.125 | 47/57-406 | | |
| NEW R9ZA1435 | 20 x 1.1/8 | 28-451 | | |
| NEW R9ZA1436 | 26 x 1.00 ~ 1.25 | 26/32-559 | | |
| R9ZA1252 | 26 x 1.50 ~ 1.75 | 40/47-559 | | |
| R9ZA1253 | 26 x 1.80 ~ 2.35 | 47/57-559 | | |
| R9ZA1254 | 27.5 x 1.50 ~ 1.75 | 40/47-584 | | |
| R9ZA1255 | 27.5 x 1.90 ~ 2.35 | 47/57-584 | | |
| R9ZA1357 | 29 x 1.90 ~ 2.35 | 47/57-622 | | |
| NEW R9ZA1437 | 650 x 18 ~ 28C | 18/28-571 | | |
| R9ZA1256 | 700 x 18 ~ 25C | 18/25-622 | | |
| R9ZA0879 | 700 x 28 ~ 32C | 28/32-622 | | |
| NEW R9ZA1438 | 700 x 35 ~ 43C | 35/43-622 | | |
| R9IS0177 | 650 x 18 ~ 28C | 18/28-571 | 60mm | |
| R9IS0125 | 700 x 18 ~ 25C | 18/25-622 | | |

FRENCH VALVE (ULTRA LIGHT)

| CODE | SIZE | ETRTO | VALVE |
|----------|-------------------|-----------|-------|
| R9ZA0871 | 20 x 1.40 ~ 1.75 | 35/47-406 | 36mm |
| R9ZA0872 | 20 x 1.80 ~ 2.125 | 47/57-406 | |
| R9ZA0869 | 20 x 1.1/8 | 28-451 | |
| R9ZA0870 | 20 x 1.3/8 | 37-451 | |
| R9IS0180 | 26 x 1.00 ~ 1.25 | 26/32-559 | |
| R9IS0147 | 26 x 1.50 ~ 1.75 | 40/47-559 | |
| R9IS0150 | 26 x 1.80 ~ 2.125 | 47/57-559 | |
| R9IS0181 | 650 x 18 ~ 25C | 18/25-571 | |
| R9IS0152 | 700 x 18 ~ 25C | 18/25-622 | |
| R9IS0153 | 700 x 18 ~ 25C | 18/25-622 | |
| R9IS0154 | 700 x 18 ~ 25C | 18/25-622 | 60mm |

ENGLISH VALVE

| CODE | SIZE | ETRTO | VALVE |
|----------|------------------------------|-----------|-------|
| R9IS0157 | 12.1/2 x 2.1/4 | 57-203 | 27mm |
| R9IS0159 | 14 x 1.75 ~ 2.125 | 47/57-254 | |
| R9IS0161 | 16 x 1.75 ~ 2.125 | 47/57-305 | |
| R9IS0163 | 18 x 1.75 ~ 2.125 | 47/57-355 | |
| R9ZA1247 | 20 x 1.50 ~ 1.75 | 40/47-406 | |
| R9IS0164 | 20 x 1.75 ~ 2.125 | 47/57-406 | |
| R9IS0165 | 20 x 1.3/8 | 37-451 | |
| R9IS0166 | 22 x 1.3/8 | 37-490 | |
| R9IS0169 | 24 x 1.75 ~ 2.125 | 47/57-507 | |
| R9IS0167 | 24 x 1.3/8 | 37-540 | |
| R9IS0170 | 26 x 1.00 ~ 1.25 | 26/32-559 | |
| R9IS0104 | 26 x 1.50 ~ 1.75 | 40/47-559 | |
| R9IS0114 | 26 x 1.80 ~ 2.125 | 47/57-559 | |
| R9IS0171 | 26 x 1.3/8 | 37-590 | |
| BCIS0521 | 26 x 1.3/8 (Thickness:1.2mm) | 37-590 | |
| R9IS0175 | 27 x 1.3/8 | 37-630 | |
| R9ZA1147 | 27 x 1.3/8 (Thickness:1.2mm) | 37-630 | |
| R9ZA0873 | 700 x 28 ~ 32C | 28/32-622 | 33mm |
| R9ZA1248 | 700 x 35 ~ 43C | 35/43-622 | |
| R9IS0176 | 27 x 1.1/8 ~ 1.1/4 | 28/32-630 | |

GERMAN VALVE

| CODE | SIZE | ETRTO | VALVE |
|----------|--------------------|-----------|--------|
| R9IS0072 | 12.1/2 x 2.1/2 | 62-203 | 26.5mm |
| R9IS0074 | 14 x 1.3/8 | 37-288 | |
| R9IS0076 | 16 x 1.50 ~ 1.75 | 40/47-305 | |
| R9IS0078 | 18 x 1.50 ~ 1.75 | 40/47-355 | |
| R9IS0080 | 20 x 1.50 ~ 1.75 | 40/47-406 | |
| R9IS0084 | 20 x 1.90 ~ 2.125 | 47/57-406 | |
| R9IS0086 | 24 x 1.50 ~ 1.75 | 40/47-507 | |
| R9IS0090 | 24 x 1.90 ~ 2.125 | 47/57-507 | |
| R9IS0100 | 26 x 1.3/8 | 37-559 | |
| R9IS0105 | 26 x 1.50 ~ 1.75 | 40/47-559 | |
| R9IS0112 | 26 x 1.90 ~ 2.125 | 47/57-559 | |
| R9IS0120 | 27 x 1.1/8 ~ 1.1/4 | 28/32-630 | |
| R9IS0127 | 700 x 18 ~ 25C | 18/25-622 | |
| R9IS0135 | 700 x 25 ~ 32C | 25/32-622 | |
| R9IS0138 | 700 x 35 ~ 43C | 35/43-622 | |
| R9IS0113 | 26 x 1.90 ~ 2.125 | 47/57-559 | |
| R9IS0136 | 700 x 25 ~ 32C | 25/32-622 | |
| R9IS0139 | 700 x 35 ~ 43C | 35/43-622 | |

SPYDER outland

 **TIOGA**

www.tiogausa.com



SPYDER OUTLAND

- Seamless 2-piece SpyderWeb Shell
- DualTech Carbonite
- Hollow Chromoly Rail
- L281 x W126 x H60mm
- 180g (without Anti-Slip Pads)

| CODE | COLOR |
|----------|-------|
| R9ZA1344 | Black |
| R9ZA1345 | White |



futuristic classic

ANTI-SLIP PADS FOR SPYDER OUTLAND

- Silicone Rubber
- 24g

| CODE | COLOR |
|----------|-------|
| R9ZA1370 | Black |
| R9ZA1371 | White |

NEW



SPYDER TWINTAIL-2



SPYDER TWINTAIL-2 **NEW** FULL CARBON RAIL

- Seamless 2-piece SpyderWeb Shell
- DualTech Carbonite
- Dual ArcFlex Rail Support
- Full Carbon-Fiber Rail
- L275 x W135 x H55mm
- 120g

| CODE | COLOR |
|----------|-------|
| R9ZA1415 | Black |
| R9ZA1416 | White |



SPYDER TWINTAIL-2 **NEW**

- Seamless 2-piece SpyderWeb Shell
- DualTech Carbonite
- Hollow Chromoly Rail
- L275 x W135 x H55mm
- 190g

| CODE | COLOR |
|----------|-------|
| R9ZA1413 | Black |
| R9ZA1414 | White |



SPYDER STRATUM



SPYDER STRATUM FULL CARBON RAIL

- Seamless 2-piece SpyderWeb Shell
- DualTech Carbonite
- Dual ArcFlex Rail Support
- Full Carbon-Fiber Rail
- L285 x W135 x H50mm
- 120g

| CODE | COLOR |
|----------|-------|
| R9IU0334 | Black |
| R9IU0335 | White |



SPYDER STRATUM

- Seamless 2-piece SpyderWeb Shell
- DualTech Carbonite
- Hollow Chromoly Rail
- L285 x W135 x H50mm
- 190g

| CODE | COLOR |
|----------|-------|
| R9IU0336 | Black |
| R9IU0337 | White |



SPYDER TWINTAIL



A Futuristic Classic product that truly pushes the limits of imagination, balancing the shape of timeless classic racing saddles with bold innovative approach to style and function, the Spyder TwinTail is declaration that saddle comfort and performance are better achieved without padding.



SPYDER TWIN TAIL

- Spyder Web Carbonite Shell
- Hollow Composite Alloy Rail
- Dual ArcFlex Rail Support
- L285 x W135 x H45mm
- 140g

| CODE | COLOR |
|----------|-------|
| R9IU0219 | Black |
| R9IU0237 | White |



SPYDER SADDLE

- Spyder Web Carbonite Shell
- Hollow Composite Alloy Rail
- ArcFlex Rail Support
- L270 x W125 x H55mm
- 160g

| CODE | COLOR |
|----------|-------|
| R9IU0235 | Black |
| R9IU0236 | White |



D-SPYDER SADDLE

- Spyder Web Mesh Design
- Position Conscious Form
- Hollow Composite Alloy Rails
- Dual ArcFlex Rail Support
- L250 x W130 x H43mm
- 165g (Black, White, Green, Pink), 160g(Clear)

| CODE | COLOR |
|----------|-------|
| R9IU0240 | Black |
| R9IU0241 | White |
| R9IU0264 | Green |
| R9IU0266 | Pink |
| R9ZA1220 | Clear |





PIVOTAL D-SPYDER SADDLE S-SPEC

- Spyder Web Carbonite Shell
- Blue Anodized Hollow Alloy Bolt
- Blue Anodized Hollow Alloy Rocker Plate
- Includes Bolt Cover Cap
- L235 x W125 x H43mm
- 171g

| CODE | COLOR |
|----------|-------|
| R9IU0311 | Black |
| R9IU0312 | White |



PIVOTAL MC SADDLE

- Direct Bolt-on System without rail
- Vinyl Top(Black),PU Top(C.P.)
- Hydro Seal(C.P. Only)
- L232 x W134 x H62mm
- 265g

| CODE | COLOR |
|----------|-------|
| R9ZA1047 | Black |
| R9ZA1048 | C.P. |



PIVOTAL MX COMP SADDLE

- Direct Bolt-On System without rail
- PVC top with Aramid fiber on rear
- Hydro Seal
- L232 x W134 x H62mm
- 265g

| CODE | COLOR |
|----------|--------|
| R9IU0297 | White |
| R9IU0234 | Orange |



MC X COMFORT

- PU Leather Top
- ArcFlex Rail Support
- Hydro Seal
- Steel Rails
- L280 x W140 x H80mm
- 360g

| CODE | COLOR |
|----------|-------|
| R9IU0223 | Black |
| R9ZA0698 | White |



STR SADDLE

- Micro Fiber Top
- ArcFlex Rail Support
- Hydro Seal
- Hollow Chromoly Rails
- L280 x W128 x H55mm
- 255g

| CODE | COLOR |
|----------|-------|
| R9ZA0789 | Black |



STC SADDLE

- Micro Fiber Top
- ArcFlex Rail Support
- Hydro Seal
- Hollow Chromoly Rails
- L280 x W143 x H65mm
- 277g

| CODE | COLOR |
|----------|-------|
| R9ZA0787 | Black |



PRIMP SADDLE

- Poly Vinyl Top with Aramid fiber(Black,White), Poly Vinyl + Micro Fiber Top(Green), Acrylic Fiber with Aramid fiber(Hound's Tooth,Herringbone), PET FiberTop (Leopard)
- Ø8mm Steel Rails
- L250 x W142 x H85mm
- 307g

| CODE | COLOR |
|----------|---------------|
| R9ZA0854 | Black |
| R9ZA0855 | White |
| R9ZA0856 | Green |
| R9ZA0857 | Hound's Tooth |
| R9ZA0858 | Herringbone |
| R9ZA0859 | Leopard |



FORTIS

TIOGA
Acentia

| CODE | COLOR |
|----------|-------|
| R9IU0251 | Black |
| R9ZA0931 | Brown |

- Sit-Bone Width : 70 ~ 130mm
- In-mold Forming with Gel Insert
- Resin Bumper & Nose Cover
- Steel Rails
- L285 x W155mm
- 433g



Injection molded one piece construction



Silicon gel pads provide more comfort & support for the sit bones



ArcFlex rail support system to lessen impacts



FORTIS AURA

TIOGA
Acentia

| CODE | COLOR |
|----------|-------|
| R9IU0252 | Black |
| R9ZA0932 | Brown |

- Sit-Bone Width : 70 ~ 140mm
- In-mold Forming with Gel Insert
- Resin Bumper & Nose Cover
- Steel Rails
- L275 x W165mm
- 434g



Injection molded one piece construction



Silicon gel pads provide more comfort & support for the sit bones



ArcFlex rail support system to lessen impacts



Cutout placed at the center for ventilation & alleviating pressure on the perineum



GEMINUS AURA

TIOGA
Accentia

| CODE | COLOR |
|----------|-------|
| R9IU0254 | Black |
| R9ZA0934 | Brown |

- Sit-Bone Width : 70 ~ 160mm
- In-mold Forming with Gel Insert
- Resin Bumper & Nose Cover
- Steel Rails
- L260 x W180mm
- 464g



Injection molded one piece construction



Silicon gel pads provide more comfort & support for the sit bones



ArcFlex rail support system to lessen impacts



Cutout placed at the center for ventilation & alleviating pressure on the perineum



GEMINUS

TIOGA
Accentia

| CODE | COLOR |
|----------|-------|
| R9IU0253 | Black |
| R9ZA0933 | Brown |

- Sit-Bone Width : 70 ~ 150mm
- In-mold Forming with Gel Insert
- Resin Bumper & Nose Cover
- Steel Rails
- L270 x W175mm
- 493g



Injection molded one piece construction



Silicon gel pads provide more comfort & support for the sit bones



ArcFlex rail support system to lessen impacts



URBANI

TIOGA
Acentia

| CODE | COLOR |
|----------|-------|
| R9IU0255 | Black |

- Sit-Bone Width : 70 ~ 170mm
- In-mold Forming with Gel Insert
- Resin Bumper & Nose Cover
- Steel Rails
- L275 x W190mm
- 535g



Injection molded one piece construction



Silicon gel pads provide more comfort & support for the sit bones



Softening material layered on the ArcFlex rail support and the base



URBANI AURA

TIOGA
Acentia

| CODE | COLOR |
|----------|-------|
| R9IU0256 | Black |

- Sit-Bone Width : 70 ~ 180mm
- In-mold Forming with Gel Insert
- Resin Bumper & Nose Cover
- Steel Rails
- L270 x W200mm
- 535g



Injection molded one piece construction



Silicon gel pads provide more comfort & support for the sit bones



Softening material layered on the ArcFlex rail support and the base



Cutout placed at the center for ventilation & alleviating pressure on the perineum



PAX TIGCA Accellia

- Sit-Bone Width : 70 ~ 190mm
- In-mold Forming with Gel Insert
- Resin Bumper & Nose Cover
- Steel Rails
- L280 x W210mm
- 767g



Injection molded one piece construction



Silicon gel pads provide more comfort & support for the sit bones



Elastomer spring for shock absorbing



| CODE | COLOR |
|----------|-------|
| R9IU0257 | Black |



PAX AURA TIGCA Accellia

- Sit-Bone Width : 70 ~ 200mm
- In-mold Forming with Gel Insert
- Resin Bumper & Nose Cover
- Steel Rails
- L275 x W220mm
- 744g



Injection molded one piece construction



Silicon gel pads provide more comfort & support for the sit bones



Elastomer spring for shock absorbing



Cutout placed at the center for ventilation & alleviating pressure on the perineum



| CODE | COLOR |
|----------|-------|
| R9IU0258 | Black |



SCEPTER CARBON SEAT POST

- 6061-T6 Forged Alloy Head
- Carbon Post
- 10mm Setback

| CODE | SIZE | LENGTH | WEIGHT |
|----------|---------|--------|--------|
| R9ZA1274 | Ø27.2mm | 350mm | 190g |
| R9ZA1275 | Ø30.9mm | | 195g |
| R9ZA1276 | Ø31.6mm | | 200g |



SCEPTER SEAT POST

- 6061 Forged Alloy Clamp
- 7050 Forged Alloy Post
- 10mm Setback

| CODE | SIZE | LENGTH | WEIGHT |
|----------|---------|--------|--------|
| R9ZA1277 | Ø27.2mm | 350mm | 260g |
| R9ZA1278 | Ø30.9mm | | 270g |
| R9ZA1279 | Ø31.6mm | | 275g |



SCEPTER 2D SEAT POST

- 6061-T6 Forged Alloy Head
- 6061-T6 Alloy Post
- 10mm Setback

NEW

| CODE | SIZE | LENGTH | WEIGHT |
|----------|---------|--------|--------|
| R9ZA1410 | Ø27.2mm | 350mm | N/A |
| R9ZA1411 | Ø30.9mm | | N/A |
| R9ZA1412 | Ø31.6mm | | 317g |



T-BONE

- 6061-T6 Forged Alloy Clamp
- 6061-T6 Alloy Post

| CODE | SIZE | LENGTH | WEIGHT |
|----------|---------|--------|--------|
| R9ZA1190 | Ø26.8mm | 350mm | 240g |
| R9ZA1191 | Ø27.0mm | | 245g |
| R9ZA1192 | Ø27.2mm | | 240g |
| R9DG0185 | Ø30.9mm | | 265g |
| R9ZA1193 | Ø31.6mm | | 270g |



AL-2D SEAT POST NEW

- Direct Alloy Head
- 6061-T5 Alloy Post
- 12mm Setback

| CODE | COLOR | SIZE | LENGTH | WEIGHT |
|----------|--------|---------|--------|--------|
| R9ZA1418 | Black | Ø27.2mm | 350mm | N/A |
| R9ZA1419 | | Ø30.9mm | | 405g |
| R9ZA1420 | | Ø31.6mm | | N/A |
| R9ZA1421 | Silver | Ø27.2mm | 350mm | N/A |
| R9ZA1422 | | Ø30.9mm | | 405g |
| R9ZA1423 | | Ø31.6mm | | N/A |



AL2000

- 6061-T6 Forged Alloy Clamp
- 6061-T6 Alloy Post

| CODE | COLOR | SIZE | LENGTH | WEIGHT |
|----------|--------|---------|--------|--------|
| R9DG0170 | Black | Ø26.4mm | 300mm | 282g |
| R9DG0171 | | Ø26.6mm | | 284g |
| R9DG0172 | | Ø26.8mm | | 286g |
| R9DG0173 | | Ø27.0mm | | 288g |
| R9DG0174 | Black | Ø27.2mm | 300mm | 290g |
| R9ZA1194 | Silver | Ø27.2mm | | 290g |
| R9DG0175 | Black | Ø29.4mm | | 332g |
| R9DG0176 | | Ø29.6mm | | 334g |
| R9DG0177 | | Ø30.4mm | 336g | |
| R9DG0178 | Black | Ø30.9mm | 300mm | 338g |
| R9DG0179 | | Ø31.6mm | | 340g |



D-LITE PIVOTAL POST

- Nylon with Alloy Tube Insert
- Direct Bolt-On System

| CODE | COLOR | SIZE | LENGTH | WEIGHT |
|----------|-------|---------|--------|--------|
| R9ZA0935 | Black | Ø25.4mm | 75mm | 55g |
| R9ZA0936 | White | | | |
| R9ZA0937 | Black | | 135mm | |
| R9ZA0938 | White | | | |



T-BONE PIVOTAL SEATPOST

- 6061-T6 Forged Alloy
- Direct Bolt-On System

| CODE | SIZE | LENGTH | WEIGHT |
|----------|---------|--------|--------|
| R9DG0182 | Ø25.4mm | 130mm | 98g |
| R9ZA1261 | Ø25.4mm | 320mm | 200g |
| R9DG0191 | Ø27.2mm | | 205g |
| R9DG0192 | Ø31.6mm | 320mm | 210g |



T-BONE MX SEATPOST

- Chromoly

| CODE | SIZE | LENGTH | WEIGHT |
|----------|---------|--------|--------|
| R9DG0189 | Ø25.4mm | 300mm | 470g |
| R9DG0190 | | 400mm | 560g |





 **TIOGA**

www.tiogausa.com

LONGHORN CARBON 20 RISERBAR

- Carbon
- 20mm Rise
- 9° Backswept
- 780mm
- 265g

| CODE | CLAMP DIA. |
|----------|------------|
| R9ZA1273 | Ø31.8mm |



LONGHORN CARBON FLATBAR

- Carbon
- 0mm Rise
- 9° Backswept
- 750mm
- 165g

| CODE | CLAMP DIA. |
|----------|------------|
| R9ZA1272 | Ø31.8mm |



LONGHORN AL 25 RISERBAR **NEW**

- 7050 Alloy
- Double Butted
- 25mm Rise
- 9° Backswept
- 780mm
- 373g

| CODE | CLAMP DIA. |
|----------|------------|
| R9ZA1402 | Ø31.8mm |



LONGHORN AL FLATBAR **NEW**

- 7050 Alloy
- Double Butted
- 0mm Rise
- 9° Backswept
- 710mm
- 282g

| CODE | CLAMP DIA. |
|----------|------------|
| R9ZA1403 | Ø31.8mm |



CARBO RISE 318

- Carbon
- 20mm Rise
- 10° Backswept
- 660mm
- 180g

| CODE | CLAMP DIA. |
|----------|------------|
| R9HD0195 | Ø31.8mm |



75 rise/a

- 6061 Alloy
- Double Butted
- 75mm Rise
- 6° Backswept
- 720mm
- 362g

| CODE | CLAMP DIA. |
|-----------------|------------|
| R9ZA1168 | Ø25.4mm |



60 rise/a

- 6061 Alloy
- Double Butted
- 60mm Rise
- 6° Backswept
- 710mm
- 351g

| CODE | CLAMP DIA. |
|-----------------|------------|
| R9ZA1167 | Ø25.4mm |



40 rise/d

- 7075 Alloy
- Triple Butted
- 40mm Rise
- 9° Backswept
- 680mm
- 256g

| CODE | CLAMP DIA. |
|-----------------|------------|
| R9ZA1160 | Ø31.8mm |



25 rise/d

- 7050 Alloy
- Triple Butted
- 25mm Rise
- 9° Backswept
- 680mm
- 254g

| CODE | CLAMP DIA. |
|-----------------|------------|
| R9ZA1159 | Ø31.8mm |



00 rise/d

- 7050 Alloy
- Double Butted(Ø25.4mm), Triple Butted(Ø31.8mm)
- 0mm Rise
- 5° Backswept
- 580mm
- 170g(Ø25.4mm), 140g(Ø31.8mm)

| CODE | CLAMP DIA. |
|-----------------|------------|
| R9ZA1157 | Ø25.4mm |
| R9ZA1158 | Ø31.8mm |



35 rise/a

- 6061 Alloy
- Double Butted(Ø25.4mm), Triple Butted(Ø31.8mm)
- 40mm Rise
- 9° Backswept
- 710mm

| CODE | CLAMP DIA. |
|-----------------|------------|
| R9HD0311 | Ø25.4mm |
| R9HD0310 | Ø31.8mm |



25 rise/a

- 6061 Alloy
- Double Butted(Ø25.4mm), Triple Butted(Ø31.8mm)
- 25mm Rise
- 9° Backswept
- 680mm
- 340g(Ø25.4mm), 305g(Ø31.8mm)

| CODE | CLAMP DIA. | COLOR |
|-----------------|------------|--------|
| R9ZA1163 | Ø25.4mm | Black |
| R9ZA1170 | Ø25.4mm | Silver |
| R9ZA1164 | Ø31.8mm | Black |



00 rise/a

- 6061 Alloy
- Double Butted
- 0mm Rise
- 5° Backswept
- 560mm
- 185g(Ø25.4mm), 180g(Ø31.8mm)

| CODE | CLAMP DIA. | COLOR |
|-----------------|------------|--------|
| R9ZA1161 | Ø25.4mm | Black |
| R9ZA1169 | | Silver |
| R9ZA1162 | Ø31.8mm | Black |



MX COMP C 8.9-12

- CrMo 11 butted
- 226mm Rise
- 1° Upswept
- 4° Backswept
- 760mm
- 840g

NEW

| CODE | CLAMP DIA. |
|----------|------------|
| R9ZA1429 | Ø22.2mm |



MX COMP C 8.0-4

- CrMo 11 butted
- 202mm Rise
- 2° Upswept
- 4° Backswept
- 700mm
- 700g

NEW

| CODE | CLAMP DIA. |
|----------|------------|
| R9ZA1428 | Ø22.2mm |



MX COMP C 7.4-10

- CrMo 11 butted
- 187mm Rise
- 1° Upswept
- 10° Backswept
- 645mm
- 730g

NEW

| CODE | CLAMP DIA. |
|----------|------------|
| R9ZA1427 | Ø22.2mm |



MX COMP C 7.5-8

- CrMo 11 butted
- 190mm Rise
- 3° Upswept
- 8° Backswept
- 710mm
- 803g

| CODE | CLAMP DIA. |
|----------|------------|
| R9HD0325 | Ø22.2mm |



MX COMP C 6.7-3

- CrMo 11 butted
- 170mm Rise
- 3° Upswept
- 3° Backswept
- 680mm
- 810g

| CODE | CLAMP DIA. |
|----------|------------|
| R9HD0326 | Ø22.2mm |



MX COMP C 5.5-8

- CrMo 11 butted
- 140mm Rise
- 3° Upswept
- 8° Backswept
- 670mm
- 715g

| CODE | CLAMP DIA. |
|----------|------------|
| R9HD0327 | Ø22.2mm |



T-BONE

- 7050-T731 Forged + CNC Alloy Body
- 7050-T731 Forged + CNC Alloy Cup
- Ø28.6mm Steering Column Clamp Dia.
- 40mm Stack Height
- 108g(80mm)

| CODE | EXTENSION | CLAMP DIA. | ANGLE |
|----------|-----------|------------|---------|
| R9ZA1084 | 80mm | Ø31.8mm | 84°/96° |
| R9ZA1085 | 90mm | | |
| R9ZA1086 | 100mm | | |



CINCH STEM NEW

- 6061-T6 Forged Alloy Body
- 6061-T6 Forged Alloy Cup
- Ø28.6mm Steering Column Clamp Dia.
- 40mm Stack Height
- 138g(80mm)

| CODE | EXTENSION | CLAMP DIA. | ANGLE |
|----------|-----------|------------|---------|
| R9ZA1405 | 35mm | Ø31.8mm | 90° |
| R9ZA1406 | 45mm | | |
| R9ZA1407 | 55mm | | |
| R9ZA1408 | 70mm | | 83°/97° |
| R9ZA1409 | 80mm | | |
| R9ZA1417 | 90mm | | |



AL NINE

- 6061-T6 Forged Alloy Body
- 6061-T6 Forged Alloy Cup
- Ø28.6mm Steering Column Clamp Dia.
- 40mm Stack Height(84°/96°, 73°/107°),
45mm Stack Height(55°/125°)
- 140g(80mm)

| CODE | EXTENSION | CLAMP DIA. | ANGLE | COLOR | |
|----------|-----------|------------|----------|---------|---------|
| R9HE0794 | 50mm | Ø25.4mm | 84°/96° | Black | |
| R9ZA1144 | 60mm | | | | |
| R9HE0796 | 70mm | | | | |
| R9ZA1070 | 80mm | | | | |
| R9HE0798 | 90mm | | | Silver | |
| R9ZA1071 | 100mm | | | | |
| R9ZA1173 | 80mm | | | | |
| R9ZA1174 | 100mm | | 55°/125° | Black | |
| R9ZA1072 | 80mm | Ø26.0mm | 84°/96° | Black | |
| R9ZA1073 | 100mm | | | | |
| R9ZA1145 | 60mm | | | Silver | |
| R9ZA1074 | 80mm | | | | |
| R9ZA1075 | 100mm | | | | |
| R9ZA1175 | 80mm | | | | |
| R9ZA1176 | 100mm | | | | |
| R9ZA1076 | 80mm | 73°/107° | Black | | |
| R9ZA1077 | 100mm | | | | |
| R9HE0799 | 50mm | | | Ø31.8mm | 84°/96° |
| R9HE0800 | 60mm | | | | |
| R9HE0801 | 70mm | | | | |
| R9ZA1078 | 80mm | | | | |
| R9HE0803 | 90mm | | | | |
| R9ZA1079 | 100mm | | | | |
| R9ZA1080 | 80mm | 73°/107° | | | |
| R9ZA1081 | 100mm | | | | |
| R9ZA1082 | 80mm | | 55°/125° | | |
| R9ZA1083 | 100mm | | | | |



CNC X BONE

- 2014-T6 CNC Alloy Body
- 2014-T6 Forged Alloy Cup
- Ø28.6mm Steering Column Clamp Dia.
- 38mm Stack Height
- 180g(90mm)

| CODE | EXTENSION | CLAMP DIA. | ANGLE |
|----------|-----------|------------|------------------------|
| R9HE0726 | 80mm | Ø25.4mm | 75°/105° (for MTB) |
| R9HE0727 | 90mm | | |
| R9HE0728 | 100mm | | |
| R9HE0729 | 110mm | Ø31.8mm | |
| R9HE0725 | 80mm | | |
| R9HE0768 | 90mm | | |
| R9HE0714 | 100mm | | |
| R9HE0770 | 110mm | Ø25.4mm | 75°/105° (for ROAD) |
| R9HE0764 | 90mm | | |
| R9ZA0632 | 100mm | | |
| R9ZA0633 | 110mm | | |
| R9HE0790 | 90mm | | |
| R9HE0791 | 100mm | | |
| R9HE0792 | 110mm | | |
| R9ZA0637 | 90mm | | |
| R9ZA0684 | 100mm | Ø31.8mm | |
| R9HE0685 | 110mm | | |



X CUBE

- 6061-T6 CNC Alloy Body & Cup
- Ø28.6mm Steering Column Clamp Dia.
- 45mm Stack Height
- 130g

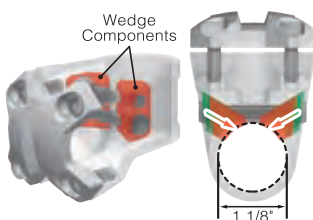
| CODE | EXTENSION | CLAMP DIA. | ANGLE |
|----------|-----------|------------|-------|
| R9HE0719 | 27.5mm | Ø25.4mm | 90° |



NIGHTHAWK

- 6061-T6 Alloy Body
- 6061-T6 Forged Alloy Cup
- Ø28.6mm Steering Column Clamp Dia.
- 30mm Stack Height
- 195g(45mm)

| CODE | EXTENSION | CLAMP DIA. | ANGLE |
|----------|-----------|------------|-------|
| R9ZA0852 | 37.5mm | Ø22.2mm | 80° |
| R9ZA0853 | 45mm | | |



RADIAL WEDGE SYSTEM

Turning the allen bolts activate the angular wedge of the internal clamping system and effectively secures the Nighthawk stem onto steer tube.

TECHNO GLIDE DH

CODE
T2DA1698

- for 1.1/8" Steering Column
- Stainless Steel Cups & Crown Cones
- Stainless Steel Cartridge Bearings
- Alloy Anchor Set
- 30.5mm Stack Height
- 190.5g
- Stainless Steel Self Color



TECHNO GLIDE

| CODE | COLOR |
|----------|--------|
| T2DA1699 | Black |
| T2DA1700 | Silver |

- for 1.1/8" Steering Column
- 7075-T6 Alloy Cups
- Stainless Steel Crown Cones
- Stainless Steel Cartridge Bearings
- Alloy Anchor Set
- 28.3mm Stack Height
- 97g



EZ

CODE
T2DA1702

- for 1.1/8" Steering Column
- 7075-T6 Alloy Cups
- Cartridge Bearings
- Alloy Anchor Set
- 28.3mm Stack Height
- 91g



ACC-1

CODE
T2DA1703

- for 1.1/8" Steering Column
- Alloy Cups
- Cartridge Bearings
- Alloy Anchor Set
- 24.8mm Stack Height
- 87g



ARR-1

CODE
T2DA1704

- for 1.1/8" Steering Column
- Alloy Cups
- Ball Retainers 5/32" x 22
- Alloy Anchor Set
- 26.1mm Stack Height
- 99g



TG3

| CODE | COLOR |
|----------|--------|
| T2DA1706 | Black |
| T2DA1707 | Silver |

- for 1.1/8" Steering Column
- Steel Cups
- Ball Retainers 5/32" x 22
- Resin Anchor Set
- 23.4mm Stack Height
- 109g



NS

CODE
R9DA0075

- for 1.1/8" Steering Column
- Alloy Cups
- Cartridge Bearings
- Alloy Anchor Set
- 11mm Stack Height
- Cup Outer Diameter : Ø44mm
- 74g



BEAR TRAP 2

CODE
T2DA1708

- for 1" Threaded Steering Column
- Steel Cups
- Ball Retainers 3/16" x 15
- 41.0mm Stack Height
- 186g
- C.P.



CARBON ANCHOR SET

- Carbon Cap
- Stainless bolt
- 22g

CODE
R9ZA0733



CARBON SPACER

- Carbon
- 2g(5mm), 4g(10mm)

| CODE | SIZE |
|-----------------|------|
| R9ZA1104 | 5mm |
| R9ZA1105 | 10mm |



AL SPACER

- 6061 Alloy
- 1g(1mm), 2g(2mm), 3g(4mm), 6g(8mm), 7g(10mm), 11g(15mm)

| CODE | COLOR | SIZE |
|-----------------|--------|------|
| R9ZA0739 | Black | 1mm |
| R9ZA0740 | Silver | |
| R9ZA0380 | Black | 2mm |
| R9ZA0657 | Silver | |
| R9ZA0381 | Black | 4mm |
| R9ZA0746 | Silver | |
| R9ZA0382 | Black | 8mm |
| R9ZA0749 | Silver | |
| R9ZA0383 | Black | 10mm |
| R9ZA0752 | Silver | |
| R9ZA0659 | Black | 15mm |
| R9ZA0660 | Silver | |



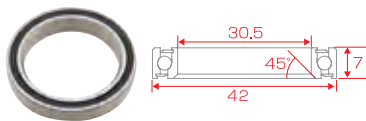
AL SPACER SET

- 6061 Alloy CNC
- Set of 4 pcs (1, 2, 4 & 8mm)
- 10g

| CODE | COLOR |
|-----------------|--------|
| R9ZA0185 | Black |
| R9ZA0186 | Silver |

4 spacers allow a combination of size ranges from 1mm - 15mm

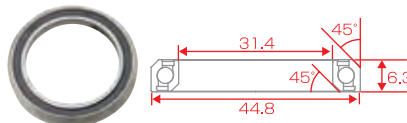
| Spacer | 1mm | 2mm | 3mm | 4mm | 5mm | 6mm | 7mm | 8mm | 9mm | 10mm | 11mm | 12mm | 13mm | 14mm | 15mm |
|--------|-----|-----|-----|-----|-----|-----|-----|-----|-----|------|------|------|------|------|------|
| 1mm | ● | | | | | | | | | | | | | | |
| 2mm | ● | ● | | | | | | | | | | | | | |
| 4mm | ● | ● | ● | | | | | | | | | | | | |
| 8mm | ● | ● | ● | ● | | | | | | | | | | | |



Bearing #1200

- for TECHNO GLIDE DH

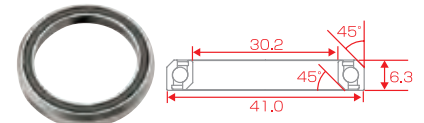
CODE
YHD03600



Bearing EZCB

- for EZ

CODE
YHD03900



Bearing #1508

- for ACC-1,NS

CODE
YHD04000

Ball Retainer #800

- for ARR-1
- 1.1/8" Ball Retainer(5/32" x 22)

CODE
YHD04500



Ball Retainer TG3BR

- for TG3
- 1.1/8" Ball Retainer(5/32" x 20)

CODE
YHD04600



Crowncone CCDH8

- for TECHNO GLIDE DH

CODE
YHD01200



Crowncone CCTG8

- for TECHNO GLIDE

CODE
YHD00300



Crowncone CCEZ

- for EZ

CODE
YHD01400



Crowncone CCIS22

- for ACC-1,NS

CODE
YHD02100

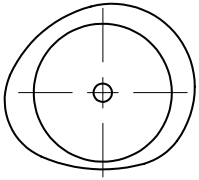


Crowncone CCARR

- for ARR-1

CODE
YHD02200





Bioergonomic Grips

- Anatomically shaped to match the natural contours of the gripping hand.
- Patented multi-radii design (U.S. Patent Number 4,964,192) allows greater control and improved handling even for riders with small hands.
- Variable thickness places padding where it is needed most for maximum shock absorption.
- Non-slip flared ends.
- Constructed of ultraviolet resistant VEXK rubber compound.

BIOGRIP

- VEXK Rubber
- Ergonomic Design
- Closed End
- 130mm
- 85g/Pair

| CODE | COLOR |
|----------|------------|
| R9ZA1340 | Black |
| R9ZA1129 | White |
| R9ZA1130 | Red |
| R9ZA1131 | Lime Green |
| R9ZA1132 | Brown |



LOCK-ON BIOGRIP

- VEXK Rubber
- Ergonomic Design
- Aluminum Lock-On System (10mm width Lock-Rings)
- Closed End
- 130mm
- 90g/Pair

| CODE | COLOR |
|----------|------------|
| R9ZA1339 | Black |
| R9ZA1125 | White |
| R9ZA1126 | Red |
| R9ZA1127 | Lime Green |
| R9ZA1128 | Brown |



TIOGA LOGO

- Kraton Rubber(Outer) / Nylon(Inner)
- Aluminum Lock-On System (10mm width Lock-Rings to both inside and outside)

STANDARD TYPE

- 135mm
- 123g/Pair

| CODE | COLOR |
|----------|-------|
| R9HF0172 | Black |

LONG TYPE

- 155mm
- 135g/Pair

| CODE | COLOR |
|----------|-------|
| R9HF0173 | Black |



SEIZER

- Kraton Rubber(Outer) / Nylon(Inner)
- Aluminum Lock-On System
(10mm width Lock-Rings to both inside and outside)
- Slanted Diamond Pattern
- 135mm
- 118g/Pair

| CODE | COLOR |
|----------|-------|
| R9HF0171 | Black |



LOCK-ON SLIM GRIP

- VEXK Rubber(Outer) / Nylon(Inner)
- Aluminum Lock-On System
(inside : 7.5mm width Lock-Rings / outside : 8.5mm width Lock-Rings)
- Slanted Diamond Pattern
- Open End with End Plugs
- 135mm
- 125g / Pair(within End Plugs / Lock Rings)

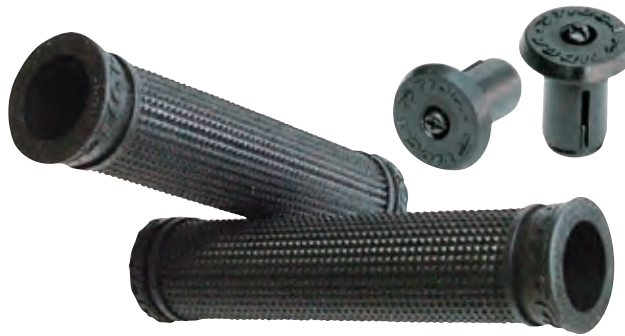
| CODE | COLOR |
|----------|-------|
| R9ZA1264 | Black |
| R9ZA1265 | White |
| R9ZA1266 | Blue |
| R9ZA1267 | Red |
| R9ZA1268 | Brown |
| R9ZA1269 | Camel |



ULTRA SLIM GRIP

- Kraton Rubber
- Slanted Diamond Pattern
- Open End with End Plugs
- 120mm

| CODE | COLOR |
|----------|-------|
| R9HF0148 | Black |



PULP GRIP

- Kraton Rubber
- Open End with End Plugs
- 120mm

| CODE | COLOR |
|----------|--------|
| R9HF0209 | Black |
| R9HF0208 | White |
| R9HF0205 | Blue |
| R9HF0206 | Red |
| R9HF0207 | Yellow |



GRITTY

- Kraton Rubber
- Open End with End Plugs
- 120mm

| CODE | COLOR |
|----------|--------|
| R9HF0125 | Blue |
| R9HF0124 | Red |
| R9HF0126 | Yellow |
| R9HF0123 | Gray |



MUSHY

- Kraton Rubber
- Open End with End Plugs
- 120mm

| CODE | COLOR |
|----------|--------|
| R9HF0204 | White |
| R9HF0119 | Blue |
| R9HF0118 | Red |
| R9HF0120 | Yellow |
| R9HF0117 | Gray |



E GRIP TIGCA Accentia

122mm / 122mm

- Kraton Rubber(Outer) / Nylon(Inner)
- Aluminum Lock-On System (11mm width Lock-Rings to inside)
- Open End with End Plugs
- 122mm
- 120g/Pair

| CODE | COLOR |
|----------|------------|
| R9ZA1213 | Black |
| R9ZA1211 | Light Gray |
| R9ZA1212 | Dark Gray |



122mm / 92mm

- Kraton Rubber(Outer) / Nylon(Inner)
- Aluminum Lock-On System (11mm width Lock-Ring to inside / Left) (11mm width Lock-Ring to outside / Right)
- Open End with End Plugs
- 122mm(Left), 92mm(Right)
- 105g/Pair

| CODE | COLOR |
|----------|------------|
| R9ZA1218 | Black |
| R9ZA1217 | Light Gray |
| R9ZA1219 | Dark Gray |



92mm / 92mm

- Kraton Rubber(Outer) / Nylon(Inner)
- Aluminum Lock-On System (11mm width Lock-Rings to outside)
- Open End with End Plugs
- 92mm
- 90g/Pair

| CODE | COLOR |
|----------|------------|
| R9ZA1215 | Black |
| R9ZA1214 | Light Gray |
| R9ZA1216 | Dark Gray |





CARBO ERGO BAREND

CODE
R9DN0045

- Carbon
- Ø30.5mm Grip Diameter
- Includes End Cups
- 114mm
- 115g/Pair



CARBO BAREND

CODE
R9DN0044

- Carbon
- Ø22.2mm Grip Diameter
- Includes End Cups
- 120mm
- 130g/Pair



POWERSTUDS 7

| CODE | COLOR |
|----------|--------|
| R9DN0029 | Black |
| R9DN0030 | Silver |

- Forged Alloy
- Ø22.2mm Grip Diameter
- Includes End Cups
- 110mm
- 130g/Pair



POWERSTUDS 6

| CODE | COLOR |
|----------|--------|
| R9DN0011 | Black |
| R9DN0012 | Silver |

- Forged Alloy
- Ø28.6mm Grip Diameter
- Includes End Cups
- 110mm
- 192g/Pair



POWERSTUDS 5

| CODE | COLOR |
|----------|--------|
| R9DN0041 | Black |
| R9DN0040 | Silver |
| R9DN0053 | White |

- Forged Alloy
- Ø22.2mm Grip Diameter
- Includes End Cups
- 88mm
- 110g/Pair



POWERSTUDS 6 MINI

| CODE | COLOR |
|----------|--------|
| R9DN0016 | Black |
| R9DN0017 | Silver |

- Forged Alloy
- Ø28.6mm Grip Diameter
- Includes End Cups
- 60mm
- 120g/Pair



CHAINRING
(for 4 arm / PCD : 104mm)

- Aluminum
- 7~9 Speed Compatible
- Silver

| CODE | SIZE |
|----------|------|
| R9ZA0913 | 32T |
| R9ZA0914 | 36T |
| R9ZA0915 | 38T |
| R9ZA0916 | 44T |
| R9ZA0917 | 48T |



CHAINRING
(for 4 arm / PCD : 64mm)

- Aluminum
- 7~9 Speed Compatible
- Silver

| CODE | SIZE |
|----------|------|
| R9ZA0910 | 22T |
| R9ZA0911 | 24T |
| R9ZA0912 | 26T |



CHAINRING
(for 5 arm / PCD : 130mm)

- Aluminum
- 7~9 Speed Compatible
- Silver

| CODE | SIZE |
|----------|------|
| R9ZA0927 | 46T |
| R9ZA0928 | 48T |
| R9ZA0929 | 50T |
| R9ZA0930 | 52T |



CHAINRING
(for 5 arm / PCD : 110mm)

- Aluminum
- 7~9 Speed Compatible
- Silver

| CODE | SIZE |
|----------|------|
| R9ZA0919 | 34T |
| R9ZA0920 | 36T |
| R9ZA0921 | 38T |
| R9ZA0922 | 46T |
| R9ZA0923 | 48T |
| R9ZA0924 | 50T |
| R9ZA0925 | 52T |



CHAINRING
(for 5 arm / PCD : 74mm)

- Aluminum
- 7~9 Speed Compatible
- Silver

| CODE | SIZE |
|----------|------|
| R9ZA0918 | 30T |

CNC SEAT CLAMP

| CODE | SIZE | COLOR |
|----------|---------|----------|
| R9ZA1282 | Ø28.6mm | Black |
| R9ZA1288 | Ø31.8mm | |
| R9ZA1294 | Ø34.9mm | |
| R9ZA1283 | Ø28.6mm | Silver |
| R9ZA1289 | Ø31.8mm | |
| R9ZA1295 | Ø34.9mm | |
| R9ZA1284 | Ø28.6mm | Gold |
| R9ZA1290 | Ø31.8mm | |
| R9ZA1296 | Ø34.9mm | |
| R9ZA1287 | Ø28.6mm | Gunmetal |
| R9ZA1293 | Ø31.8mm | |
| R9ZA1299 | Ø34.9mm | |
| R9ZA1285 | Ø28.6mm | Blue |
| R9ZA1291 | Ø31.8mm | |
| R9ZA1297 | Ø34.9mm | |
| R9ZA1286 | Ø28.6mm | Red |
| R9ZA1292 | Ø31.8mm | |
| R9ZA1298 | Ø34.9mm | |



- 6061-T6 Alloy
- 20g

CNC SEAT CLAMP (QUICK RELEASE)

| CODE | SIZE | COLOR |
|----------|---------|----------|
| R9ZA0993 | Ø28.6mm | Black |
| R9ZA0999 | Ø31.8mm | |
| R9ZA1005 | Ø34.9mm | |
| R9ZA0994 | Ø28.6mm | Silver |
| R9ZA1000 | Ø31.8mm | |
| R9ZA1006 | Ø34.9mm | |
| R9ZA0995 | Ø28.6mm | Gold |
| R9ZA1001 | Ø31.8mm | |
| R9ZA1007 | Ø34.9mm | |
| R9ZA0996 | Ø28.6mm | Gunmetal |
| R9ZA1002 | Ø31.8mm | |
| R9ZA1008 | Ø34.9mm | |
| R9ZA0997 | Ø28.6mm | Blue |
| R9ZA1003 | Ø31.8mm | |
| R9ZA1009 | Ø34.9mm | |
| R9ZA0998 | Ø28.6mm | Red |
| R9ZA1004 | Ø31.8mm | |
| R9ZA1010 | Ø34.9mm | |



- 6061-T6 Alloy
- 32g

CNC QUICK RELEASE SET (2 PIECE SET)

O.L.D. : 130mm

- Front / Rear Set
- O.L.D. : 100mm(Front) / 130mm(Rear)
- Steel Shaft
- 51.5g

| CODE | COLOR |
|----------|----------|
| R9ZA1013 | Black |
| R9ZA1014 | Silver |
| R9ZA1015 | Gold |
| R9ZA1016 | Gunmetal |
| R9ZA1017 | Blue |
| R9ZA1018 | Red |



O.L.D. : 135mm

- Front / Rear Set
- O.L.D. : 100mm(Front) / 135mm(Rear)
- Steel Shaft
- 52g

| CODE | COLOR |
|----------|----------|
| R9ZA1019 | Black |
| R9ZA1020 | Silver |
| R9ZA1021 | Gold |
| R9ZA1022 | Gunmetal |
| R9ZA1023 | Blue |
| R9ZA1024 | Red |

CNC QUICK RELEASE SET (3 PIECE SET)

- Front / Rear / Seat Pin Set
- O.L.D. : 100mm(Front) / 135mm(Rear)
- Steel Shaft
- 74g

| CODE | COLOR |
|----------|----------|
| R9ZA1025 | Black |
| R9ZA1026 | Silver |
| R9ZA1027 | Gold |
| R9ZA1028 | Gunmetal |
| R9ZA1029 | Blue |
| R9ZA1030 | Red |



CNC QUICK SEAT PIN

- Steel Shaft
- 22g

| CODE | COLOR |
|----------|----------|
| R9ZA1031 | Black |
| R9ZA1032 | Silver |
| R9ZA1033 | Gold |
| R9ZA1034 | Gunmetal |
| R9ZA1035 | Blue |
| R9ZA1036 | Red |



CURVED QUICK RELEASE SET

(2 PIECE SET)

- Front / Rear Set
- O.L.D. : 100mm(Front) / 135mm(Rear)
- Steel Shaft
- 114g

| CODE | COLOR |
|----------|----------|
| R9ZA0948 | Black |
| R9ZA0949 | Silver |
| R9ZA0950 | Gold |
| R9ZA0951 | Gunmetal |
| R9ZA0952 | Blue |
| R9ZA0953 | Red |



CURVED QUICK RELEASE SET

(3 PIECE SET)

- Front / Rear / Seat Pin Set
- O.L.D. : 100mm(Front) / 135mm(Rear)
- Steel Shaft
- 158g

| CODE | COLOR |
|----------|----------|
| R9ZA0954 | Black |
| R9ZA0955 | Silver |
| R9ZA0956 | Gold |
| R9ZA0957 | Gunmetal |
| R9ZA0958 | Blue |
| R9ZA0959 | Red |



CURVED QUICK SEAT PIN

- Steel Shaft
- 44g

| CODE | COLOR |
|----------|----------|
| R9ZA0942 | Black |
| R9ZA0943 | Silver |
| R9ZA0944 | Gold |
| R9ZA0945 | Gunmetal |
| R9ZA0946 | Blue |
| R9ZA0947 | Red |





I-LINK (for BRAKE)

- I-LINK Outer Housing (1set x 1.5m)
- Liners (1pc x 2m & 1pc x 1.3m)
- End Pieces (5pcs for frame, 2pcs for brake & 3pcs for brake lever)
- Frame Protectors (2pcs)
- Extra Color Links (10 links each of gold, red, and blue)

| CODE | COLOR |
|-----------------|--------|
| R9ZA0414 | Black |
| R9ZA0413 | Silver |

I-LINK (for SHIFTER)

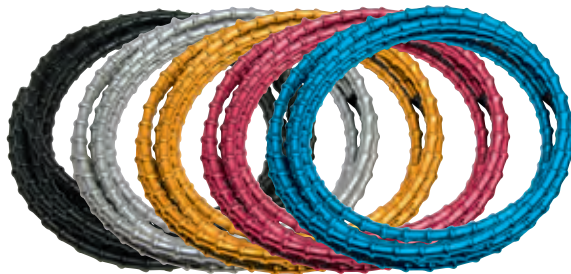
- I-LINK Outer Housing (1set x 1.8m)
- Liners (1pc x 2m & 1pc x 1.3m)
- End Pieces (8pcs for frame, 5pcs for shifter)
- Frame Protectors (3pcs)
- Extra Color Links (10 links each of gold, red, and blue)

| CODE | COLOR |
|-----------------|--------|
| R9ZA0415 | Black |
| R9ZA0416 | Silver |

OUTER HOUSING

- 1m Length

| CODE | COLOR |
|-----------------|--------|
| R9ZA0417 | Black |
| R9ZA0418 | Silver |
| R9ZA0421 | Blue |
| R9ZA0420 | Red |
| R9ZA0419 | Gold |



LINER

- 2m Length

| CODE |
|-----------------|
| R9ZA0424 |



END PIECE (for FRAME)

- 2 Pieces
- Ø5.8mm

| CODE |
|-----------------|
| R9ZA0422 |



END PIECE (for BRAKE)

- 2 Pieces
- Ø5.0mm

| CODE |
|-----------------|
| R9ZA0423 |



FRAME PROTECTOR

- 4 Pieces

| CODE |
|-----------------|
| R9ZA0425 |



END PIECE (for BRAKE LEVER & SHIFTER)

- 2 Pieces

| CODE |
|-----------------|
| R9ZA0426 |



For V-BRAKE

BRH125

- Anti-Lock Brake System
- With Angle Adjusting Spacers
- 72mm

| CODE | COLOR |
|----------|-------|
| R9ZA1262 | Black |



BRH126

- Alloy Holder with Fixing Pin (Cartridge type)
- With Angle Adjusting Spacers
- 55mm

| CODE | COLOR |
|----------|-------|
| R9ZA1263 | Black |



BRH075

- Alloy Holder with Fixing Pin (Cartridge type)
- With Angle Adjusting Spacers
- 72mm

| CODE | COLOR |
|----------|--------|
| R9ZA0529 | Silver |



BRH100

- Repair Pads for BRH075
- 72mm

| CODE | COLOR |
|----------|--------|
| R9ZA0530 | Black |
| R9ZA0531 | Red |
| R9ZA0533 | Yellow |
| R9ZA0532 | Gray |



BRH098

- Alloy Holder with Fixing Pin (Cartridge type)
- With Angle Adjusting Spacers
- 70mm
- Black (Hard type), Red (Semi-hard type)

| CODE | COLOR |
|----------|-------|
| R9ZA0172 | Black |
| R9ZA0160 | Red |



BRH099

- Repair Pads for BRH098
- With Fixing Pins
- 70mm
- Black (Hard type), Red (Semi-hard type)

| CODE | COLOR |
|----------|-------|
| R9ZA0175 | Black |
| R9ZA0176 | Red |



BRH101

- With Angle Adjusting Spacers
- 70mm

| CODE | COLOR |
|----------|-----------|
| R9ZA0536 | Black |
| R9ZA0538 | Dark Blue |
| R9ZA0539 | Red |
| R9ZA0537 | Gray |



For CANTILEVER BRAKE

BRH122

- Forged Alloy Post
- 72mm

| CODE | COLOR |
|----------|-------|
| R9ZA1121 | Black |



BRH003

- Forged Alloy Post
- 55mm

| CODE | COLOR |
|----------|-------|
| R9ZA0708 | Black |



BRH107

- Alloy Holder (Cartridge type)
- With Angle Adjusting Spacers
- Fits to Shimano Dura-Ace, Ultegra or 105
- 55mm

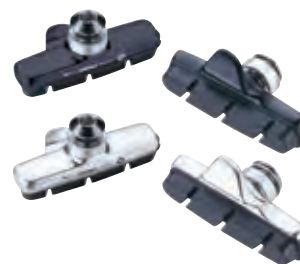
| CODE | COLOR |
|----------|-----------|
| R9ZA0648 | Mat Black |
| R9ZA0653 | Silver |



BRH108

- Alloy Holder (Cartridge type)
- 55mm
- Fits to Campagnolo Record, Chorus and Centaur

| CODE | COLOR |
|----------|-----------|
| R9ZA0549 | Mat Black |
| R9ZA0710 | Silver |



BRH124

- Repair Pads for BRH107, BRH123
- 55mm

| CODE | COLOR |
|----------|-------|
| R9ZA1124 | Black |



BRH089

- Repair Pads for BRH108
- 55mm

| CODE | COLOR |
|----------|-------|
| R9ZA0551 | Black |



For ROAD CARBON RIM

BRH118

- Alloy Holder with Fixing Pin (Cartridge type)
- 55mm
- Fits to Shimano Dura-Ace, Ultegra and 105

| CODE | COLOR |
|----------|-------|
| R9ZA1335 | Blue |



BRH120

- Alloy Holder (Cartridge type)
- 55mm
- Fits to Campagnolo Record, Chorus and Centaur

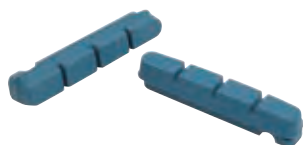
| CODE | COLOR |
|----------|-------|
| R9ZA1337 | Blue |



BRH119

- Repair Pads for BRH107, BRH118
- 55mm

| CODE | COLOR |
|----------|-------|
| R9ZA1336 | Blue |



BRH121

- Repair Pads for BRH108, BRH120
- 55mm

| CODE | COLOR |
|----------|-------|
| R9ZA1338 | Blue |



For TRIAL

BRH067

- for V-Brake
- 60mm

| CODE | COLOR |
|----------|-------|
| R9ZA0552 | Amber |



BRH069

- for Magura Hydro Rim Brake
- 50mm

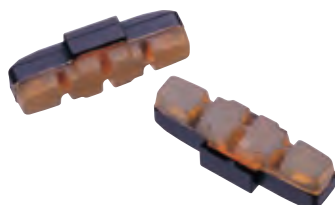
| CODE | COLOR |
|----------|--------|
| R9ZA0554 | Yellow |



BRH068

- for Magura Hydro Rim Brake
- 50mm

| CODE | COLOR |
|----------|-------|
| R9ZA0553 | Amber |



BRH094

- for Magura Hydro Rim Brake
- 37mm

| CODE | COLOR |
|----------|-------|
| R9ZA0555 | Red |



For U-BRAKE

BRH082

- for U-Brake
- 68mm

| CODE | COLOR |
|----------|-------|
| R9ZA0544 | Black |



For BMX

BRH083

- for BMX Brake
- 69mm

| CODE | COLOR |
|----------|-------|
| R9ZA0545 | Black |





HANDY BOTTLE **NEW**

CODE
R9ZA1187



HIGH FLOW BOTTLE **NEW**

CODE
R9ZA1394



RACE BOTTLE **NEW**

| CODE | COLOR |
|----------|-----------|
| R9ZA0907 | City |
| R9ZA0909 | Peloton |
| R9ZA0677 | Amsterdam |
| R9ZA0908 | Jam |
| R9ZA0679 | Puzzle |
| R9KX0030 | Spyder |
| R9ZA0700 | Hakkaisan |



Spyder



City



Peloton



Amsterdam



Jam



Puzzle



Hakkaisan

THERMO BOTTLE **NEW**

- Temperature range : -20°C ~ 40°C
- Thickness : 35mm
- W85 x H205mm

| CODE | COLOR |
|----------|-----------------|
| R9ZA1188 | Cool-Blue |
| R9ZA1228 | Silver |
| R9ZA1229 | Red |
| R9ZA1230 | Yellow-Bullet |
| R9ZA1231 | Bug-Black |
| R9ZA1232 | Bug-White |
| R9ZA1233 | Black-Camo |
| R9ZA1234 | Honeycomb-Green |
| R9ZA1235 | Stained-Glass |
| R9ZA1236 | Spyder |



Silver



Cool-Blue



Red



Yellow-Bullet



Bug-Black



Bug-White



Black-Camo



Honey-Comb-Green



Stend-Glass



Spyder

 **TIOGA**



2016

Always wear a helmet and other appropriate safety equipment.
Respect the environment and those who share it with you.
Some specification and cosmetics may change without notice.

© 2015 Tioga, All Rights Reserved.